

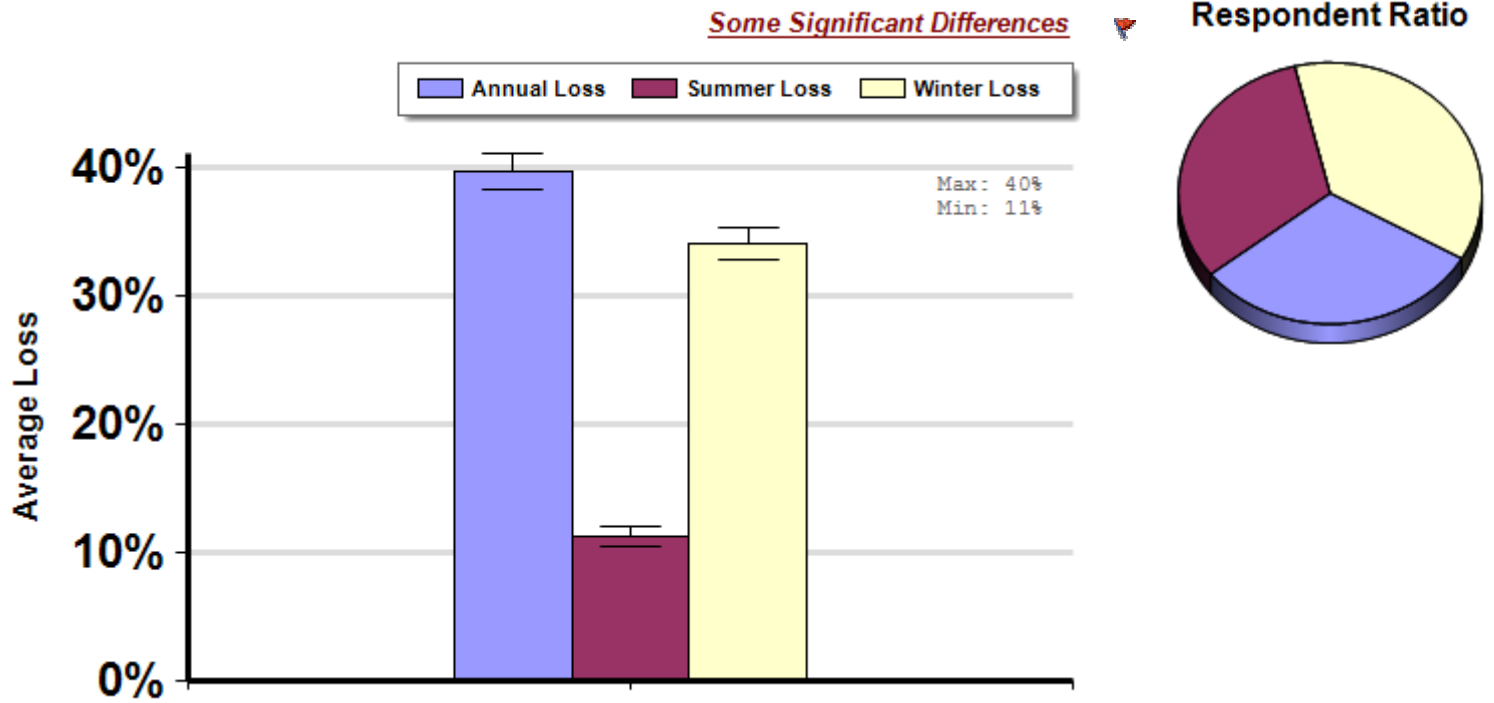


Losses suffered by all respondent beekeepers over the season.

“Summer Losses” are those suffered between April 1 2010 and Oct 1 2010.
 “Winter Losses” are those suffered between Oct 1 2010 and April 1 2011.
 “Annual Losses” are the sum of both Summer and Winter losses.

Over All

Report ID: 5



Interpretation

Not surprisingly, most losses are reported to occur over the winter season, although summer losses are not insignificant.

Survey Question

Several questions used

	Total Number of Respondents Providing Valid Responses	Total Number of Colonies Managed	Average Colony Loss			Total Colony Loss		
			Mean	Lower 95% CI	Upper 95% CI	Total	Lower CI	Upper CI
Annual Loss	2,551	154,371	39.8%	38.4%	41.1%	38.0%	37.1%	39.0%
Summer Loss	2,619	160,932	11.2%	10.5%	12.0%	18.3%	17.7%	18.9%
Winter Loss	3,050	270,118	34.1%	32.8%	35.4%	26.6%	25.7%	27.5%

Comments About This Data

Average Losses are the average total loss of all operations. This metric is used to compare populations with different risk factor exposure.

Relevant Links, References, and Citations

Funded By:



United States
Department of
Agriculture

National Institute
of Food
and Agriculture

This information is for educational purposes only. References to commercial products or trade names do not imply endorsement by the Bee Informed Partnership or its members. The results presented here are the summary of the population who responded. The sample may not be representative of the beekeeping population at large. These results simply highlight differences in the sample population. The results cannot be considered conclusive, causative, protective, or attest to product efficacy or lack of efficacy.