



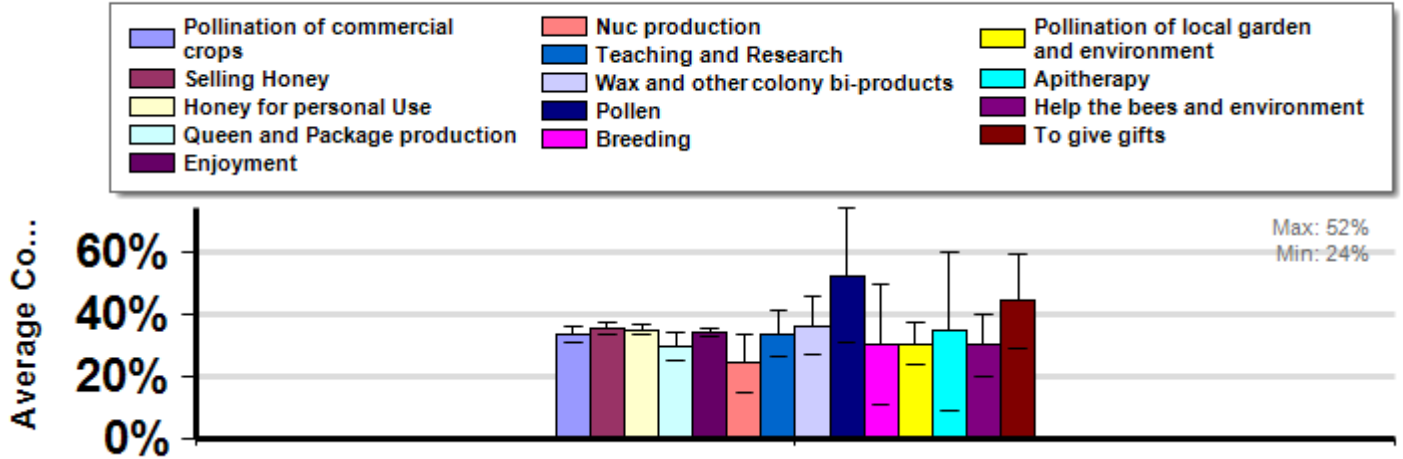
# Average Loss By Reason Responding Beekeepers Indicated they Kept Bees

Average loss suffered by beekeepers who indicated the reason or reasons they kept bees

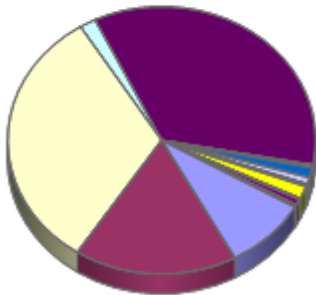
Winter

Report ID: 14

*Some Significant Differences*



### Respondent Ratio



### Interpretation

**Beekeepers who indicated they kept bees to produce "nucs" lost fewer colonies than those who indicated they kept bees to make honey for sale and/or personal use.**

### Survey Question

11. Over the last year (1 April 2010 to 1 April 2011), which of the following activities did you use your colonies for (check all that apply)?

	Total Number of Respondents Providing Valid Responses	Total Number of Colonies Managed	Average Colony Loss			Percentage of responding beekeepers in each operations size classification who indicated a particular reason they kept bees. Respondents could indicate more than one reason.		
			Mean	Lower 95% CI	Upper 95% CI	Backyard	Sideline	Commercial
Pollination of commercial crops	627	235,759	33.4%	30.7%	36.1%	18.7%	43.1%	93.2%
Selling Honey	1,223	255,119	35.5%	33.7%	37.3%	37.6%	87.2%	95.5%
Honey for personal Use	2,280	67,590	35.1%	33.7%	36.6%	76.2%	57.8%	40.9%

Queen and Package production	122	86,952	29.6%	25.0%	34.3%	2.6%	27.5%	40.9%
Enjoyment	2,507	36,811	34.0%	32.6%	35.4%	84.5%	57.8%	11.4%
Nuc production	25	1,797	24.2%	14.8%	33.6%	0.6%	7.3%	2.3%
Teaching and Research	85	998	33.6%	26.3%	41.0%	2.8%	3.7%	0.0%
Wax and other colony bi-products	58	3,878	36.3%	27.0%	45.5%	1.9%	0.9%	2.3%
Pollen	11	361	52.5%	30.9%	74.0%	0.3%	0.9%	0.0%
Breeding	12	243	30.4%	11.1%	49.7%	0.4%	0.9%	0.0%
Pollination of local garden and environment	109	434	30.6%	23.6%	37.6%	3.8%	0.0%	0.0%
Apitherapy	12	66	34.6%	9.1%	60.1%	0.4%	0.0%	0.0%
Help the bees and environment	51	354	30.0%	19.8%	40.2%	1.7%	0.9%	0.0%
To give gifts	21	122	44.2%	29.0%	59.5%	0.7%	0.0%	0.0%

---

## Comments About This Data

---

## Relevant Links, References, and Citations

Funded By:



United States  
Department of  
Agriculture

National Institute  
of Food  
and Agriculture

This information is for educational purposes only. References to commercial products or trade names do not imply endorsement by the Bee Informed Partnership or its members. The results presented here are the summary of the population who responded. The sample may not be representative of the beekeeping population at large. These results simply highlight differences in the sample population. The results cannot be considered conclusive, causative, protective, or attest to product efficacy or lack of efficacy.