



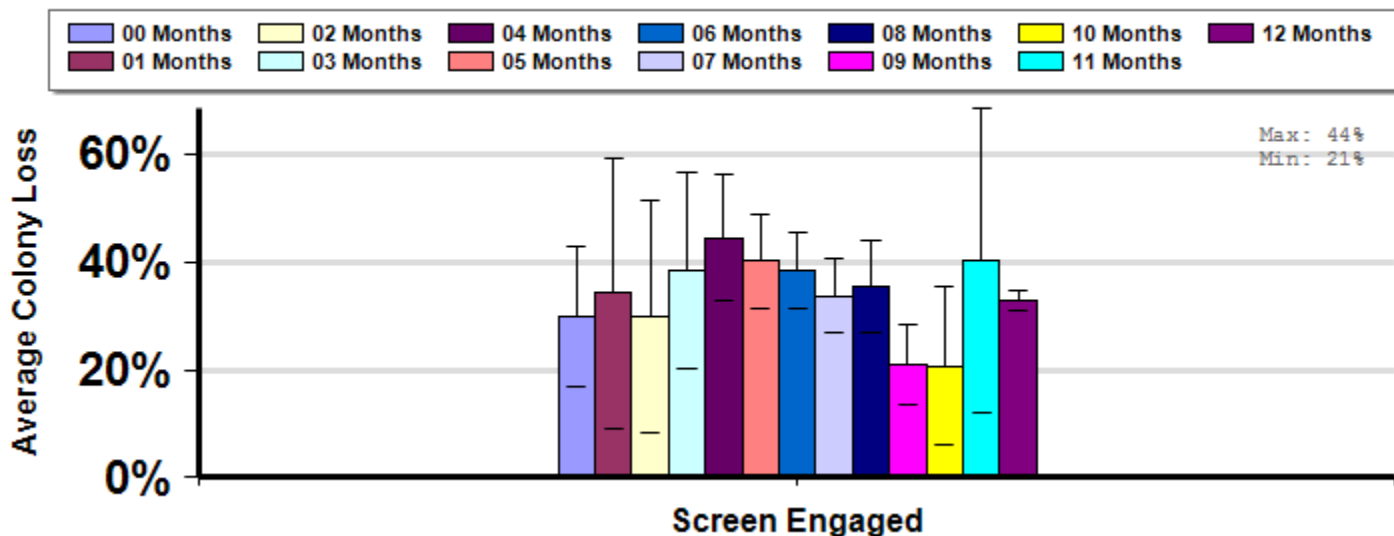
Screen Bottom Boards by Months Engaged

Average winter colony mortality reported by beekeepers that reported use of screen bottom boards on their colonies between April 1 2010 and April 1 2011 by the number of months screen bottom boards were engaged.

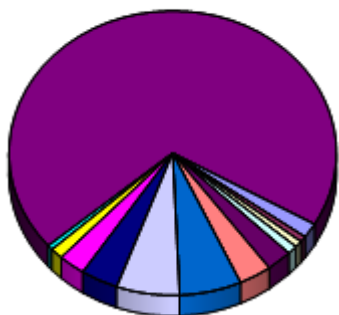
Winter

Report ID: 140

Some Significant Differences



Respondent Ratio



Interpretation

Beekeepers who employed screen bottom boards for 9 months lost fewer colonies, on average than those who employed screen bottom boards for 4, 5, 6 or 12 months.

Survey Question

27. Did you use screen bottom boards in any of the colonies in your operation?
 Yes
 28. In which months did you have your screen bottom board engaged (turned on or open)?

	Screen Engaged	Total Number of Respondents Providing Valid Responses	Total Number of Colonies Managed	Average Number of Colonies Managed		Average Colony Loss		
				Mean	Standard Error	Mean(%)	Lower 95% CI	Upper 95% CI
	00 Months	34	316	9.3	3.9	29.8	16.8	42.8
	01 Months	13	48	3.7	0.9	34.2	9.0	59.4
	02 Months	15	154	10.3	6.2	29.9	8.2	51.6

03 Months	20	93	4.7	1.6	38.5	20.1	56.8
04 Months	50	384	7.7	2.0	44.4	32.7	56.2
05 Months	65	487	7.5	1.4	40.3	31.5	49.0
06 Months	122	1,094	9.0	1.8	38.5	31.4	45.6
07 Months	124	770	6.2	1.4	33.7	26.8	40.5
08 Months	74	330	4.5	0.4	35.6	27.0	44.1
09 Months	53	495	9.3	1.9	21.0	13.4	28.6
10 Months	25	127	5.1	1.1	20.7	6.1	35.4
11 Months	11	40	3.6	0.9	40.4	12.2	68.5
12 Months	1,389	10,769	7.8	0.6	33.0	31.2	34.9

Comments About This Data

Response rates were low for some months which resulted in large confidence intervals. A larger response rate may help highlight other differences.

Relevant Links, References, and Citations

Funded By:



United States
Department of
Agriculture

National Institute
of Food
and Agriculture

This information is for educational purposes only. References to commercial products or trade names do not imply endorsement by the Bee Informed Partnership or its members. The results presented here are the summary of the population who responded. The sample may not be representative of the beekeeping population at large. These results simply highlight differences in the sample population. The results cannot be considered conclusive, causative, protective, or attest to product efficacy or lack of efficacy.