



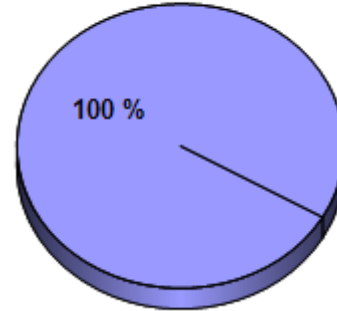
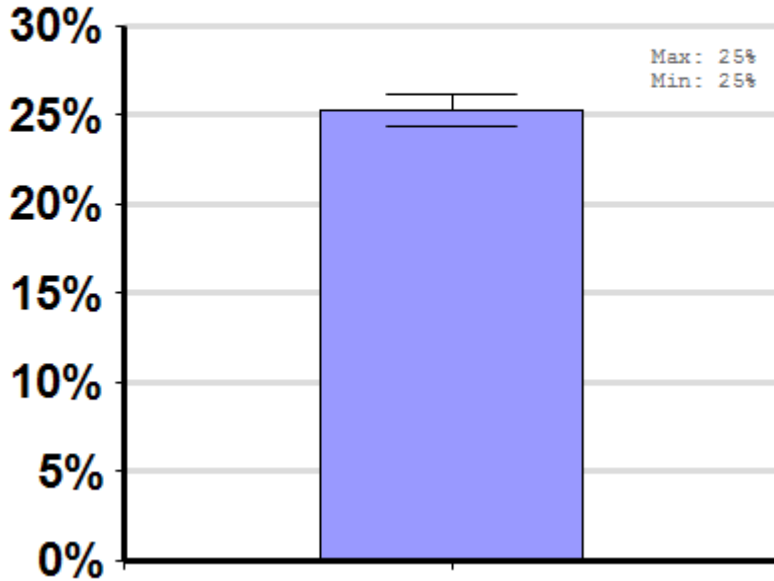
Winter

Report ID: 179-2012

A comparison of average winter colony mortality among beekeepers who reported they did not feed and those who reported they did feed ApiGo, at least once, to a majority of their colonies between April, 2011 and March, 2012.

No Significant Differences

Respondent Ratio



Interpretation

100% of respondents did not use ApiGo.

Survey Question

Did you apply ApiGo to a majority of your colonies between April, 2011 and March, 2012?

		Total Number of Respondents Providing Valid Responses	Total Number of Colonies Managed	Average Number of Colonies Managed		Average Colony Loss		
				Mean	Standard Error	Mean(%)	Lower 95% CI	Upper 95% CI
	Product Not Used	4,798	296,623	61.8	9.7	25.3	24.4	26.2

Comments About This Data

Relevant Links, References, and Citations

Funded By:



United States Department of Agriculture

National Institute of Food and Agriculture

This information is for educational purposes only. References to commercial products or trade names do not imply endorsement by the Bee Informed Partnership or its members. The results presented here are the summary of the population who responded. The sample may not be representative of the beekeeping population at large. These results simply highlight differences in the sample population. The results cannot be considered conclusive, causative, protective, or attest to product efficacy or lack of efficacy.