



# Average Loss By Percent Income Derived From Beekeeping

Management Survey 2012

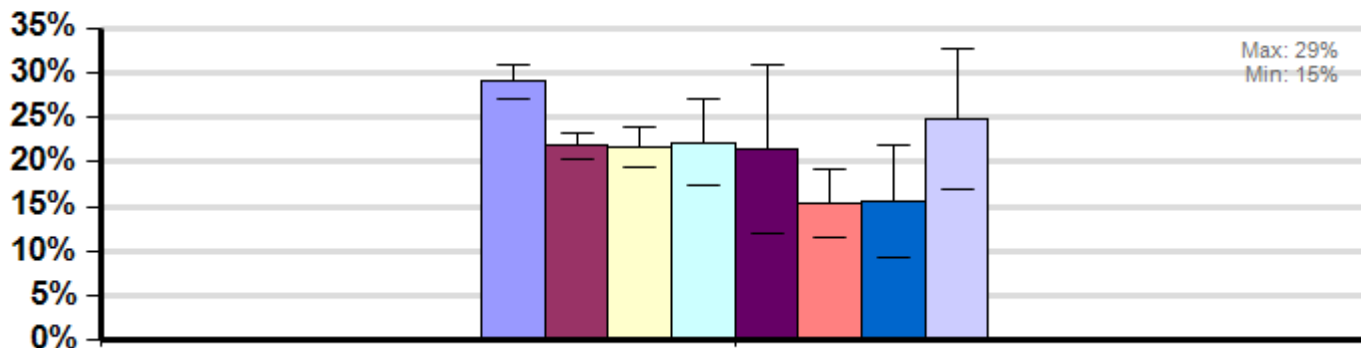
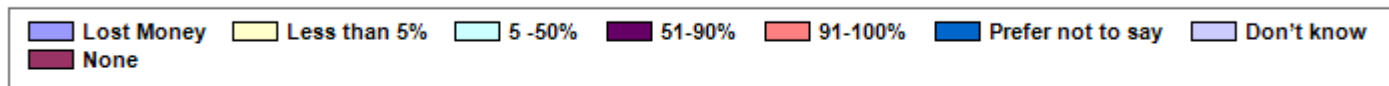
( Filtered by: )

Winter

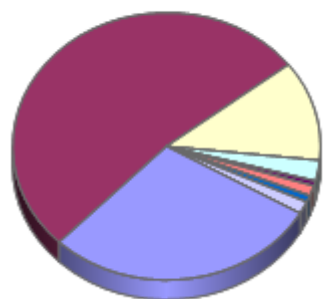
Average loss suffered by proportion of total income derived from beekeeping activity differed from April, 2011 to March, 2012.

Report ID: 17-2012

*Some Significant Differences*



## Respondent Ratio



## Interpretation

Beekeepers who reported losing money keeping bees lost more colonies than beekeepers who derived no income from keeping bees, made less than 51% of their income from keeping bees, and those that derived more than 90% of their income from keeping bees.

## Survey Question

What percentage of your annual income was derived from your beekeeping activities last year?

- Lost money
- Less than 5%
- 5-50%
- 51-90%
- 91-100%
- Prefer not to say
- Don't know
- None

	Total Number of Respondents Providing Valid Responses	Total Number of Colonies Managed	Average Colony Loss			Percentage of respondents in each operation size classification who indicated a particular proportion of their income was derived by beekeeping activities		
			Mean	Lower 95% CI	Upper 95% CI	Backyard	Sideline	Commercial
Lost Money	1,099	22,021	29.1%	27.2%	31.0%	29.3%	27.7%	7.8%
None	1,982	12,331	21.8%	20.4%	23.1%	54.7%	6.4%	2.0%
Less than 5%	461	7,740	21.6%	19.4%	23.8%	12.1%	17.0%	0.0%
5 -50%	95	8,459	22.1%	17.3%	27.0%	1.6%	25.5%	5.9%
51-90%	23	18,274	21.4%	12.0%	30.8%	0.1%	8.5%	15.7%
91-100%	47	168,205	15.4%	11.6%	19.2%	0.1%	7.1%	68.6%
Prefer not to say	31	1,814	15.6%	9.3%	21.9%	0.6%	7.1%	0.0%
Don't know	57	634	24.7%	16.9%	32.6%	1.6%	0.7%	0.0%

## Comments About This Data

## Relevant Links, References, and Citations

Funded By:



United States  
Department of  
Agriculture

National Institute  
of Food  
and Agriculture

This information is for educational purposes only. References to commercial products or trade names do not imply endorsement by the Bee Informed Partnership or its members. The results presented here are the summary of the population who responded. The sample may not be representative of the beekeeping population at large. These results simply highlight differences in the sample population. The results cannot be considered conclusive, causative, protective, or attest to product efficacy or lack of efficacy.