



Drone Brood Removal Proportion of Operation

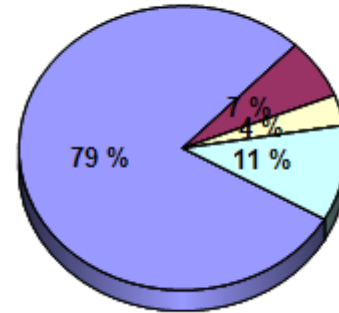
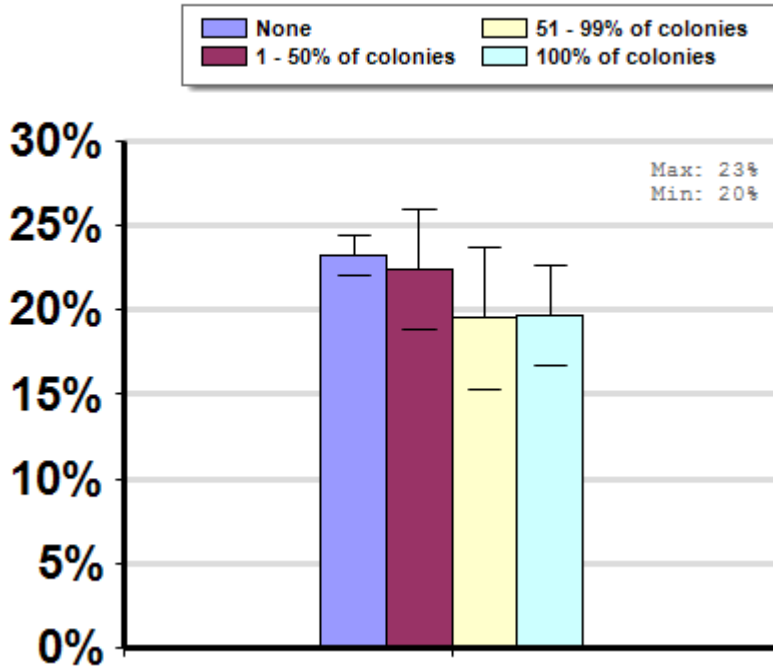
Winter

Report ID: 110-2012

Average winter colony mortality reported by beekeepers that employed drone comb removal between April, 2011 and March, 2012 by percent of operation in which the method was employed.

No Significant Differences

Respondent Ratio



Interpretation

No differences between groups.

Survey Question

In what percentage of your colonies did you apply Drone brood removal?

- 0-50%
- 50-99%
- All Colonies

		Total Number of Respondents Providing Valid Responses	Total Number of Colonies Managed	Average Number of Colonies Managed		Average Colony Loss		
				Mean	Standard Error	Mean(%)	Lower 95% CI	Upper 95% CI
Drone Brood Removal	1 - 50% of colonies	211	11,839	56.1	20.8	22.4	18.8	26.0
	100% of colonies	338	24,645	72.9	46.7	19.7	16.7	22.7
	51 - 99% of colonies	109	4,033	37.0	11.0	19.5	15.3	23.7
	None	2,441	79,905	32.7	9.6	23.2	22.0	24.4

Comments About This Data

Relevant Links, References, and Citations

Funded By:



United States
Department of
Agriculture

National Institute
of Food
and Agriculture

This information is for educational purposes only. References to commercial products or trade names do not imply endorsement by the Bee Informed Partnership or its members. The results presented here are the summary of the population who responded. The sample may not be representative of the beekeeping population at large. These results simply highlight differences in the sample population. The results cannot be considered conclusive, causative, protective, or attest to product efficacy or lack of efficacy.