



# Screen Bottom Boards by Months Engaged

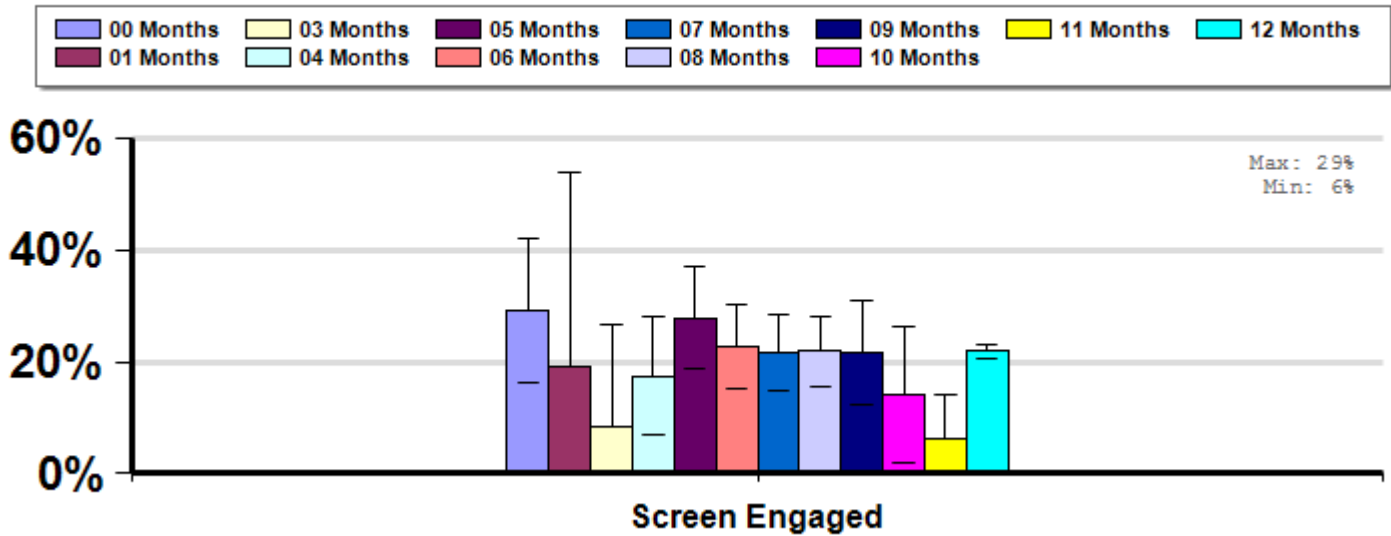
Management Survey 2012

Average winter colony mortality reported by beekeepers that reported use of screen bottom boards on their colonies between April, 2011 and March, 2012 by the number of months screen bottom boards were engaged.

## Winter

Report ID: 140-2012

*Some Significant Differences*



## Interpretation

Beekeepers who did not use screen bottom board saw on average the highest losses while those who used screen bottom boards for 11 months saw the lowest losses.

## Survey Question

Over the last year, did you employ any of the IPM practices/equipment listed below?

-Screen bottom board

		Total Number of Respondents Providing Valid Responses	Total Number of Colonies Managed	Average Number of Colonies Managed		Average Colony Loss		
				Mean	Standard Error	Mean(%)	Lower 95% CI	Upper 95% CI
Screen Engaged	00 Months	32	216	6.8	1.7	29.0	16.1	41.9
	01 Months	7	42	6.0	2.8	19.0	0.0	54.0
	03 Months	12	30	2.5	0.5	8.3	0.0	26.7
	04 Months	34	146	4.3	0.8	17.5	6.8	28.2
	05 Months	57	370	6.5	1.4	27.8	18.6	37.0
	06 Months	68	837	12.3	6.7	22.7	15.3	30.1
	07 Months	90	536	6.0	1.0	21.7	14.9	28.5
	08 Months	82	727	8.9	1.7	21.9	15.6	28.2
	09 Months	46	406	8.8	2.5	21.7	12.3	31.0
	10 Months	16	78	4.9	1.4	14.1	1.8	26.4
	11 Months	14	73	5.2	1.8	6.1	0.0	14.0
	12 Months	1,829	18,343	10.0	1.7	21.8	20.5	23.2

## Comments About This Data

## Relevant Links, References, and Citations

Funded By:



United States  
Department of  
Agriculture

National Institute  
of Food  
and Agriculture

This information is for educational purposes only. References to commercial products or trade names do not imply endorsement by the Bee Informed Partnership or its members. The results presented here are the summary of the population who responded. The sample may not be representative of the beekeeping population at large. These results simply highlight differences in the sample population. The results cannot be considered conclusive, causative, protective, or attest to product efficacy or lack of efficacy.