



Small Cell Size Comb Use by Percent of Use in Operation

Winter

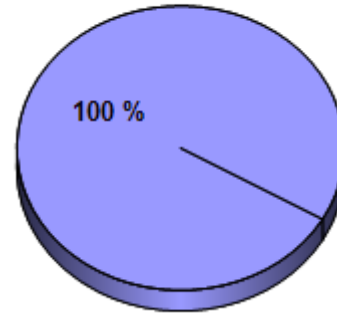
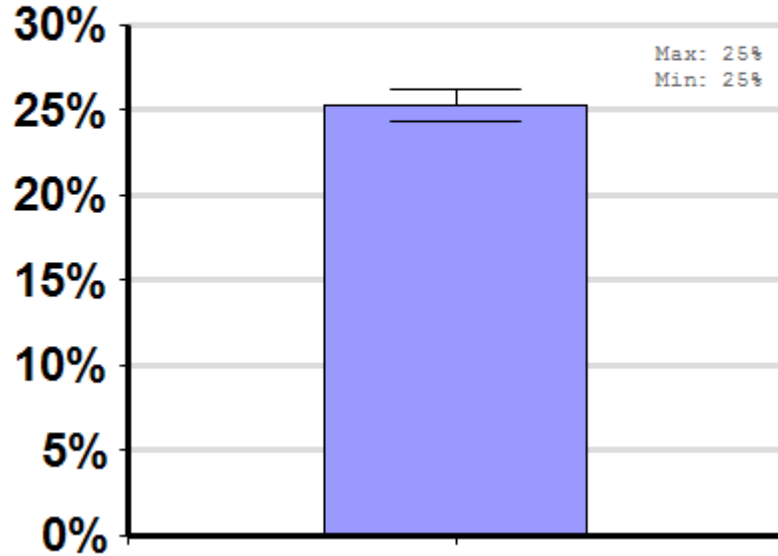
Report ID: 119-2012

Average winter colony mortality suffered by beekeepers who reported they did not use and those who did use brood comb with small cell size in at least some percentage of the colonies in their operation, between April, 2011 and March, 2012, by percentage of use within operations.

No Significant Differences

Respondent Ratio

Data not present in 2012 survey



Interpretation

no comparison.

Survey Question

n/a

		Total Number of Respondents Providing Valid Responses	Total Number of Colonies Managed	Average Number of Colonies Managed		Average Colony Loss		
				Mean	Standard Error	Mean(%)	Lower 95% CI	Upper 95% CI
Small Cell Size	Data not present in 2012 survey	4,802	296,660	61.8	9.7	25.3	24.4	26.2

Comments About This Data

Relevant Links, References, and Citations

Funded By:



United States Department of Agriculture

National Institute of Food and Agriculture

This information is for educational purposes only. References to commercial products or trade names do not imply endorsement by the Bee Informed Partnership or its members. The results presented here are the summary of the population who responded. The sample may not be representative of the beekeeping population at large. These results simply highlight differences in the sample population. The results cannot be considered conclusive, causative, protective, or attest to product efficacy or lack of efficacy.