



# Small Hive Beetle Trap Use by Sub-Region

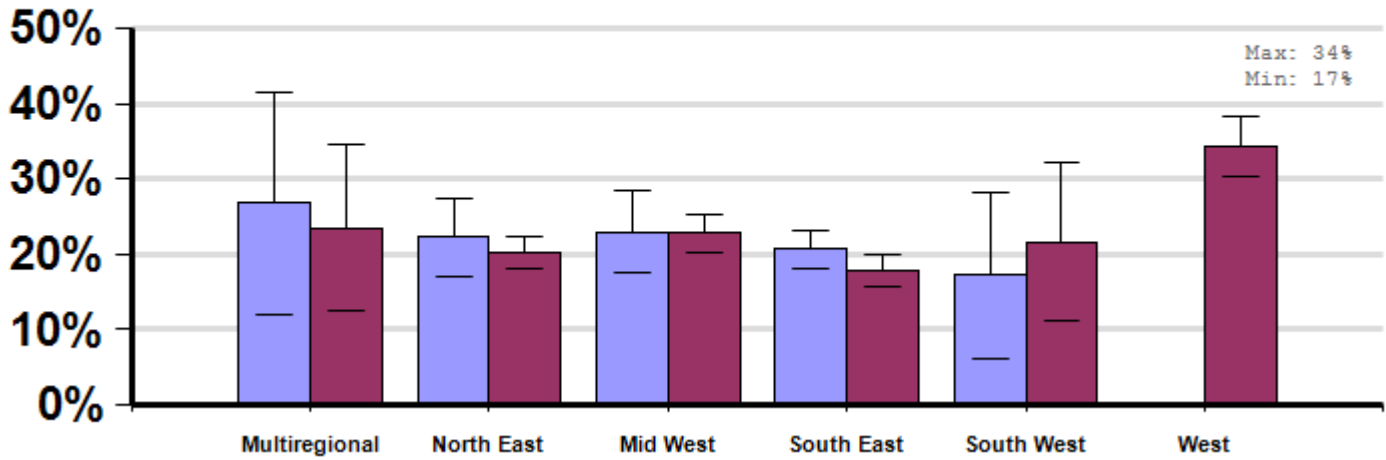
Management Survey 2012

## Winter

Report ID: 128-2012

Average winter colony mortality reported by beekeepers who used or did not use Small Hive Beetle traps in at least some of the colonies in their operation, between April, 2011 and March, 2012, by sub-region of operation.

No Significant Differences



## Interpretation

No differences between groups.

## Survey Question

Over the last year, did you employ any of the IPM practices/equipment listed below?

- Drone comb removal
- Small cell size comb
- Small hive beetle trap
- Screened bottom board

|               |                    | Total Number of Respondents Providing Valid Responses | Total Number of Colonies Managed | Average Number of Colonies Managed |                | Average Colony Loss |              |              |
|---------------|--------------------|---|----------------------------------|------------------------------------|----------------|---------------------|--------------|--------------|
|               |                    |   |                                  | Mean                               | Standard Error | Mean(%)             | Lower 95% CI | Upper 95% CI |
| Multiregional | Technique Used     | 17  | 17,690                           | 1040.6                             | 937.2          | 26.8                | 12.0         | 41.5         |
|               | Technique Not Used | 20  | 15,912                           | 795.6                              | 747.9          | 23.5                | 12.5         | 34.5         |
| North East    | Technique Used     | 152   | 18,737                           | 123.3                              | 105.3          | 22.2                | 17.1         | 27.3         |
|               | Technique Not Used | 700   | 6,905                            | 9.9                                | 1.0            | 20.2                | 18.0         | 22.3         |
| Mid West      | Technique Used     | 102   | 1,990                            | 19.5                               | 10.8           | 23.0                | 17.6         | 28.4         |
|               | Technique Not Used | 477   | 24,170                           | 50.7                               | 31.8           | 22.7                | 20.2         | 25.3         |
| South East    | Technique Used     | 447   | 32,076                           | 71.8                               | 39.6           | 20.7                | 18.2         | 23.2         |
|               | Technique Not Used | 539   | 9,813                            | 18.2                               | 5.9            | 17.8                | 15.7         | 19.8         |
| South West    | Technique Used     | 17  | 426                              | 25.1                               | 15.9           | 17.2                | 6.2          | 28.3         |
|               | Technique Not Used | 35  | 15,538                           | 443.9                              | 428.2          | 21.6                | 11.1         | 32.1         |
| West          | Technique Not Used | 280   | 30,592                           | 109.3                              | 53.0           | 34.3                | 30.4         | 38.2         |

## Comments About This Data

## Relevant Links, References, and Citations

Funded By:



United States  
Department of  
Agriculture

National Institute  
of Food  
and Agriculture

This information is for educational purposes only. References to commercial products or trade names do not imply endorsement by the Bee Informed Partnership or its members. The results presented here are the summary of the population who responded. The sample may not be representative of the beekeeping population at large. These results simply highlight differences in the sample population. The results cannot be considered conclusive, causative, protective, or attest to product efficacy or lack of efficacy.