



The Bee Informed Partnership  
Management Survey Results (2012)  
Small Hive Beetle Traps

---

[BeeInformed.org](http://BeeInformed.org)

Funded by:



United States  
Department of  
Agriculture

National Institute  
of Food  
and Agriculture

Release Date: June 2013

This information is for educational purposes only. References to commercial products or trade names do not imply endorsement by the Bee Informed Partnership or its members. The results presented here are the summary of the population who responded. The sample may not be representative of the beekeeping population at large. These results simply highlight differences in the sample population. The results cannot be considered conclusive, causative, protective, or attest to product efficacy or lack of efficacy.



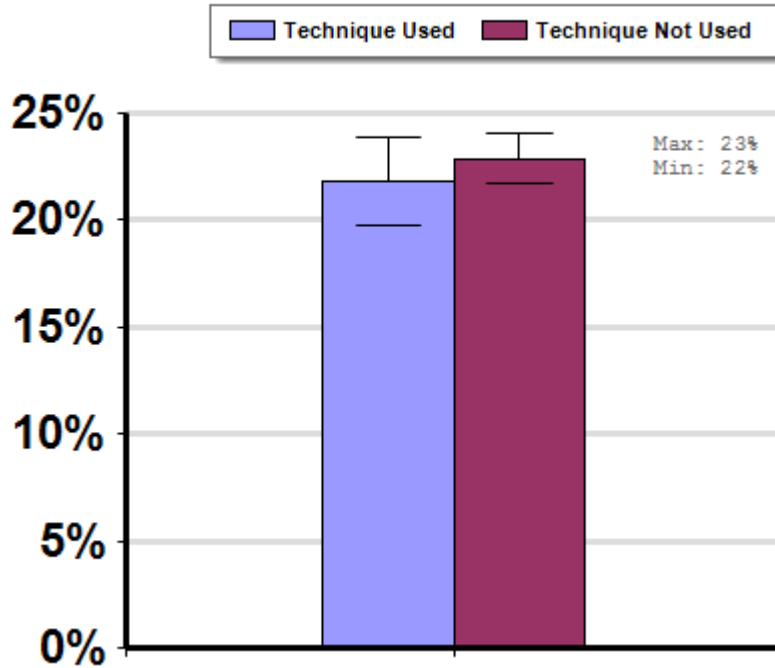
# Small Hive Beetle Trap Use

Average winter colony mortality reported by beekeepers who used or did not use Small Hive Beetle traps in at least some of the colonies in their operation, between April, 2011 and March, 2012.

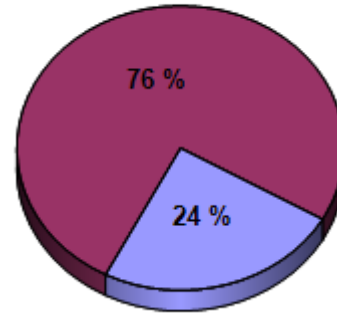
## Winter

Report ID: 122-2012

No Significant Differences



## Respondent Ratio



## Interpretation

No differences between groups.

## Survey Question

Over the last year, did you employ any of the IPM practices/equipment listed below?

-Small hive beetle trap

		Total Number of Respondents Providing Valid Responses	Total Number of Colonies Managed	Average Number of Colonies Managed		Average Colony Loss		
				Mean	Standard Error	Mean(%)	Lower 95% CI	Upper 95% CI
	Technique Not Used	2,349	75,447	32.1	9.2	22.9	21.7	24.1
	Technique Used	751	44,977	59.9	25.2	21.8	19.8	23.9

## Comments About This Data

## Relevant Links, References, and Citations

Funded By:



United States  
Department of  
Agriculture

National Institute  
of Food  
and Agriculture

This information is for educational purposes only. References to commercial products or trade names do not imply endorsement by the Bee Informed Partnership or its members. The results presented here are the summary of the population who responded. The sample may not be representative of the beekeeping population at large. These results simply highlight differences in the sample population. The results cannot be considered conclusive, causative, protective, or attest to product efficacy or lack of efficacy.



# Small Hive Beetle Trap Use by Region

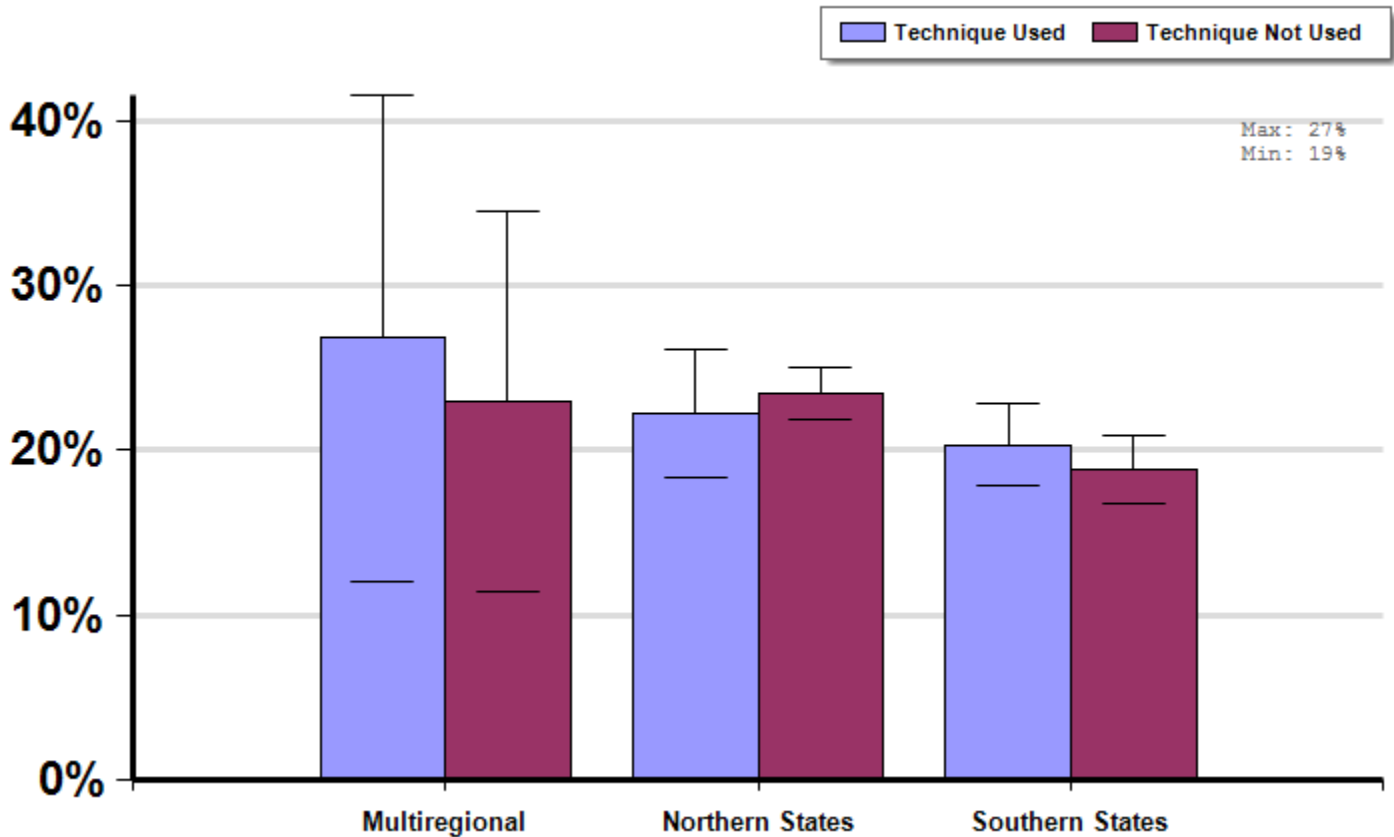
Management Survey 2012

Average winter colony mortality reported by beekeepers who did or did not use Small Hive Beetle traps in at least some of the colonies in their operation, between April, 2011 and March, 2012, by region of operation.

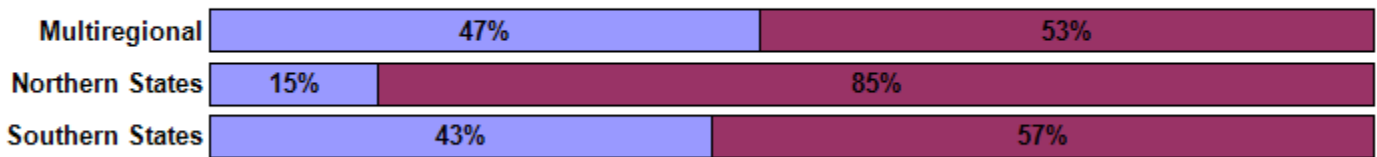
## Winter

Report ID: 125-2012

No Significant Differences (within regions)



## Respondent Ratio



## Interpretation

No differences between groups.

## Survey Question

Over the last year, did you employ any of the IPM practices/equipment listed below?

- Drone comb removal
- Small cell size comb
- Small hive beetle trap
- Screened bottom board

		Total Number of Respondents Providing Valid Responses	Total Number of Colonies Managed	Average Number of Colonies Managed		Average Colony Loss		
				Mean	Standard Error	Mean(%)	Lower 95% CI	Upper 95% CI
Multiregional	Technique Used	17	17,690	1040.6	937.2	26.8	12.0	41.5
	Technique Not Used	19	15,906	837.2	787.2	23.0	11.4	34.5
Northern States	Technique Used	238	3,041	12.8	3.8	22.2	18.4	26.1
	Technique Not Used	1,402	41,103	29.3	10.3	23.5	21.9	25.0
Southern States	Technique Used	447	14,812	33.1	17.0	20.3	17.8	22.8
	Technique Not Used	590	14,097	23.9	9.0	18.8	16.7	20.9

## Comments About This Data

## Relevant Links, References, and Citations

Funded By:



United States  
Department of  
Agriculture

National Institute  
of Food  
and Agriculture

This information is for educational purposes only. References to commercial products or trade names do not imply endorsement by the Bee Informed Partnership or its members. The results presented here are the summary of the population who responded. The sample may not be representative of the beekeeping population at large. These results simply highlight differences in the sample population. The results cannot be considered conclusive, causative, protective, or attest to product efficacy or lack of efficacy.



# Small Hive Beetle Trap Use by Sub-Region

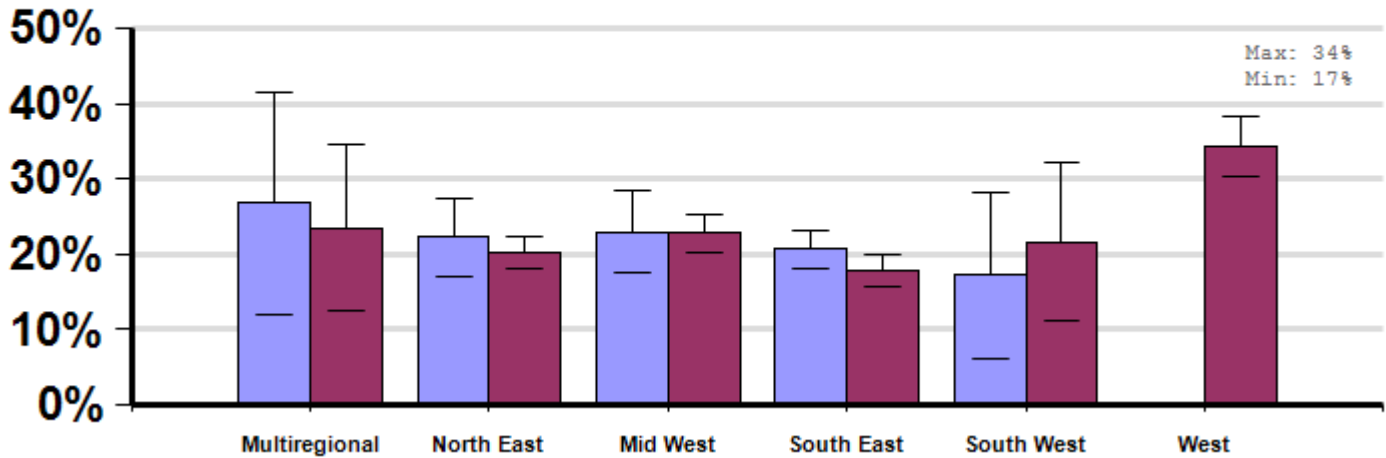
Management Survey 2012

## Winter

Report ID: 128-2012

Average winter colony mortality reported by beekeepers who used or did not use Small Hive Beetle traps in at least some of the colonies in their operation, between April, 2011 and March, 2012, by sub-region of operation.

No Significant Differences



## Interpretation

No differences between groups.

## Survey Question

Over the last year, did you employ any of the IPM practices/equipment listed below?

- Drone comb removal
- Small cell size comb
- Small hive beetle trap
- Screened bottom board

		Total Number of Respondents Providing Valid Responses	Total Number of Colonies Managed	Average Number of Colonies Managed		Average Colony Loss		
				Mean	Standard Error	Mean(%)	Lower 95% CI	Upper 95% CI
Multiregional	Technique Used	17	17,690	1040.6	937.2	26.8	12.0	41.5
	Technique Not Used	20	15,912	795.6	747.9	23.5	12.5	34.5
North East	Technique Used	152	18,737	123.3	105.3	22.2	17.1	27.3
	Technique Not Used	700	6,905	9.9	1.0	20.2	18.0	22.3
Mid West	Technique Used	102	1,990	19.5	10.8	23.0	17.6	28.4
	Technique Not Used	477	24,170	50.7	31.8	22.7	20.2	25.3
South East	Technique Used	447	32,076	71.8	39.6	20.7	18.2	23.2
	Technique Not Used	539	9,813	18.2	5.9	17.8	15.7	19.8
South West	Technique Used	17	426	25.1	15.9	17.2	6.2	28.3
	Technique Not Used	35	15,538	443.9	428.2	21.6	11.1	32.1
West	Technique Not Used	280	30,592	109.3	53.0	34.3	30.4	38.2

## Comments About This Data

## Relevant Links, References, and Citations

Funded By:



United States  
Department of  
Agriculture

National Institute  
of Food  
and Agriculture

This information is for educational purposes only. References to commercial products or trade names do not imply endorsement by the Bee Informed Partnership or its members. The results presented here are the summary of the population who responded. The sample may not be representative of the beekeeping population at large. These results simply highlight differences in the sample population. The results cannot be considered conclusive, causative, protective, or attest to product efficacy or lack of efficacy.





# Small Hive Beetle Trap Use by Proportion of Use in Operation

Average winter colony mortality suffered by beekeepers who used or did not use Small Hive Beetle traps in at least some of the colonies in their operation, between April, 2011 and March, 2011, by proportion of use in their operation.

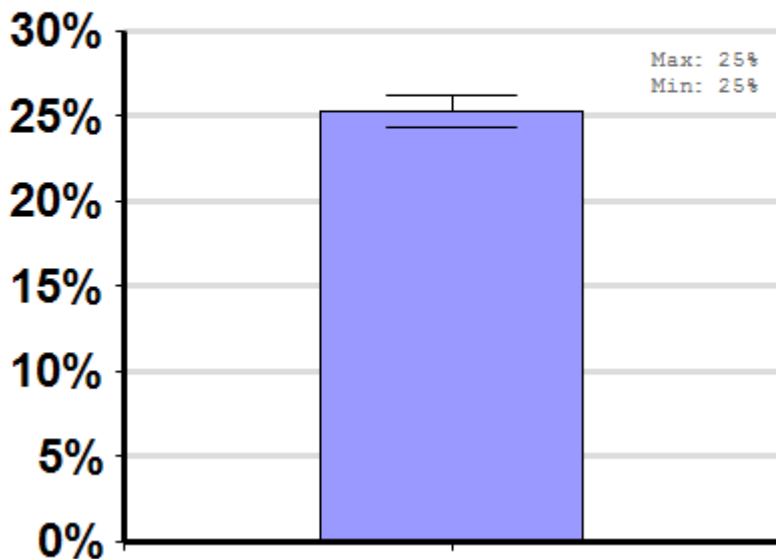
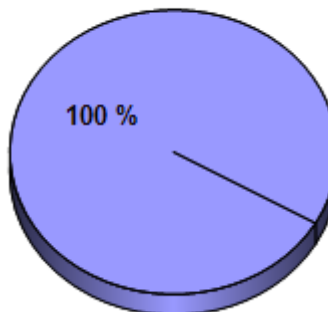
## Winter

Report ID: 131-2012

No Significant Differences

### Respondent Ratio

Data not present in 2012 survey



### Interpretation

no comparison.

## Survey Question

Over the last year, did you employ any of the IPM practices/equipment listed below?

- Drone comb removal
- Small cell size comb
- Small hive beetle trap
- Screened bottom board

		Total Number of Respondents Providing Valid Responses	Total Number of Colonies Managed	Average Number of Colonies Managed		Average Colony Loss		
				Mean	Standard Error	Mean(%)	Lower 95% CI	Upper 95% CI
SHB Trap Used	Data not present in 2012 survey	4,802	296,660	61.8	9.7	25.3	24.4	26.2

## Comments About This Data

## Relevant Links, References, and Citations

Funded By:



United States  
Department of  
Agriculture

National Institute  
of Food  
and Agriculture

This information is for educational purposes only. References to commercial products or trade names do not imply endorsement by the Bee Informed Partnership or its members. The results presented here are the summary of the population who responded. The sample may not be representative of the beekeeping population at large. These results simply highlight differences in the sample population. The results cannot be considered conclusive, causative, protective, or attest to product efficacy or lack of efficacy.