



# The Bee Informed Partnership Management Survey Results (2012) Feeding: Protein

---

BeelInformed.org

Funded by:



United States  
Department of  
Agriculture

National Institute  
of Food  
and Agriculture

Release Date: June 2013

This information is for educational purposes only. References to commercial products or trade names do not imply endorsement by the Bee Informed Partnership or its members. The results presented here are the summary of the population who responded. The sample may not be representative of the beekeeping population at large. These results simply highlight differences in the sample population. The results cannot be considered conclusive, causative, protective, or attest to product efficacy or lack of efficacy.

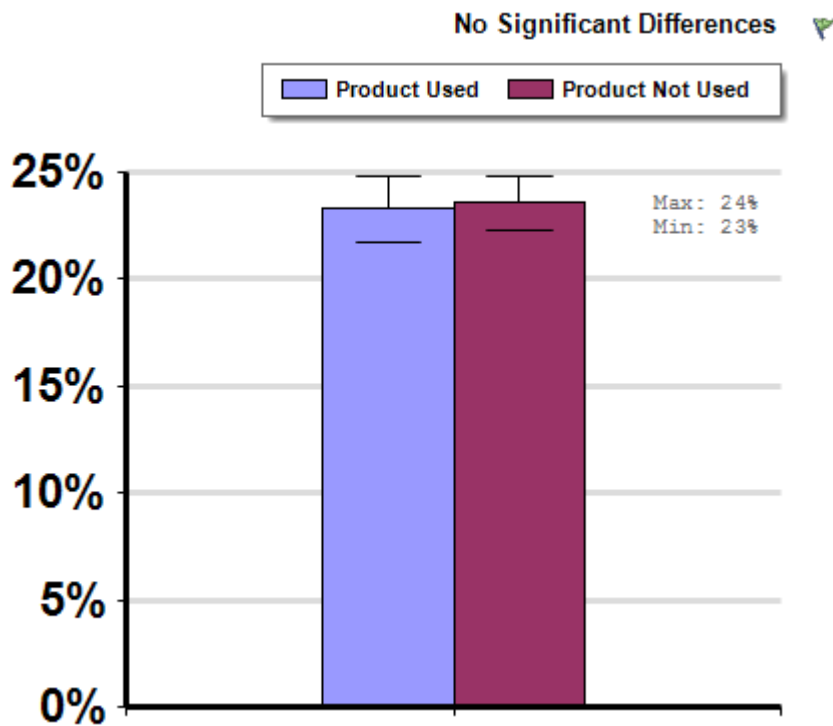


# Protein Feed Use

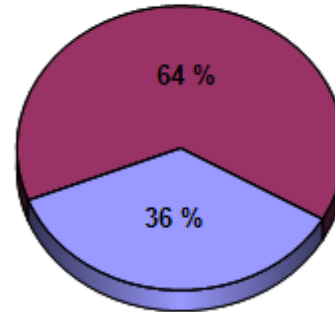
## Winter

Report ID: 155-2012

A comparison of winter mortality among those who indicated they did not feed and did feed to a majority of their colonies, at least once between April, 2011 and March, 2012, with a protein feed. Protein feed included: Self-made protein feed containing pollen, Self-made protein feed without real pollen, Bee Pro, MegaBee, Global Patties, and other Commercial protein feeds.



## Respondent Ratio



## Interpretation

No differences between groups.

## Survey Question

Which if any of the following did you apply to a majority of your colonies between April 1, 2011 and March, 2012?

- Self-made protein feed containing pollen
- Self-made protein feed without real pollen
- Bee Pro
- MegaBee
- Global Patties
- Other Commercial protein feeds

		Total Number of Respondents Providing Valid Responses	Total Number of Colonies Managed	Average Number of Colonies Managed		Average Colony Loss		
				Mean	Standard Error	Mean(%)	Lower 95% CI	Upper 95% CI
	Product Not Used	2,321	75,571	32.6	12.2	23.6	22.3	24.8
	Product Used	1,288	157,687	122.4	24.2	23.3	21.7	24.8

---

## Relevant Links, References, and Citations

Funded By:



United States  
Department of  
Agriculture

National Institute  
of Food  
and Agriculture

This information is for educational purposes only. References to commercial products or trade names do not imply endorsement by the Bee Informed Partnership or its members. The results presented here are the summary of the population who responded. The sample may not be representative of the beekeeping population at large. These results simply highlight differences in the sample population. The results cannot be considered conclusive, causative, protective, or attest to product efficacy or lack of efficacy.



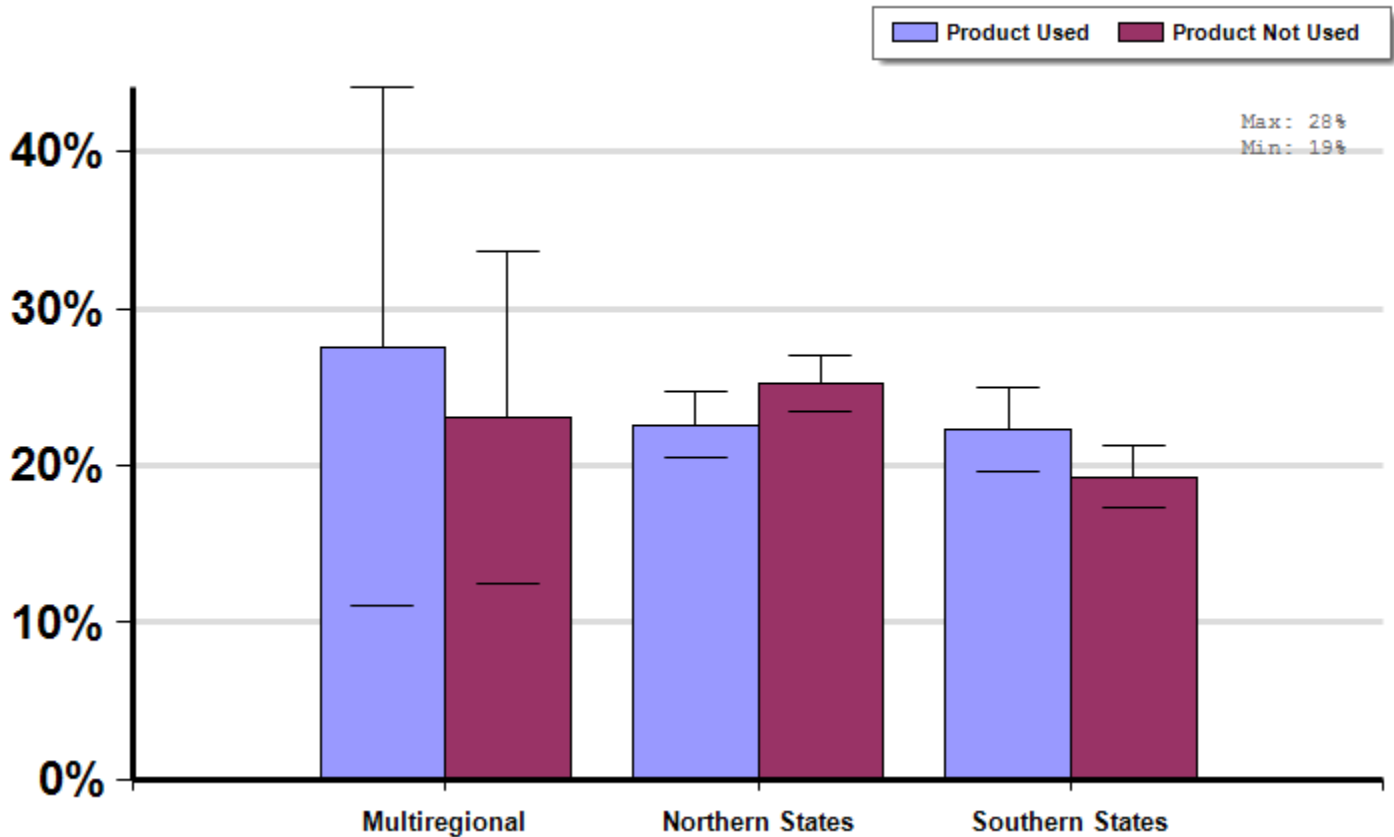
# Protein Feed Use By Region

## Winter

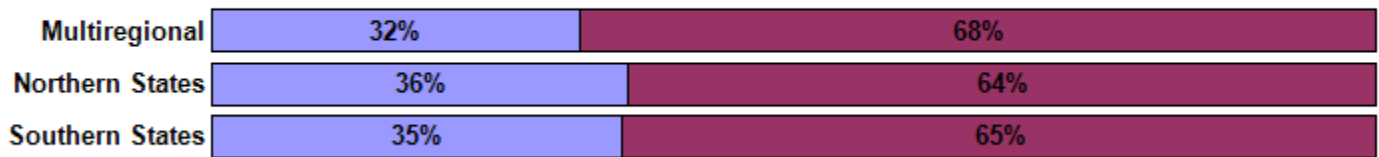
Report ID: 158-2012

A comparison of winter mortality among those who indicated they did feed and those who did not feed a majority of their colonies, at least once between April, 2011 and March, 2012, with a protein feed by region of operation. Protein feed included: Self-made protein feed containing pollen, Self-made protein feed without real pollen, Bee Pro, MegaBee, Global Patties, and other Commercial protein feeds.

No Significant Differences (within regions)



## Respondent Ratio



## Interpretation

No differences between groups.

## Survey Question

Which, if any of the following, did you apply to a majority of your colonies between April 1, 2011 and March, 2012?

- Self-made protein feed containing pollen
- Self-made protein feed without real pollen
- Bee Pro
- MegaBee

- Global Patties
- Other Commercial protein feeds

		Total Number of Respondents Providing Valid Responses	Total Number of Colonies Managed	Average Number of Colonies Managed		Average Colony Loss		
				Mean	Standard Error	Mean(%)	Lower 95% CI	Upper 95% CI
Multiregional	Product Used	12	22,086	1840.5	1290.1	27.6	11.1	44.1
	Product Not Used	26	19,243	740.1	613.5	23.0	12.4	33.6
Northern States	Product Used	703	57,942	82.4	23.3	22.6	20.5	24.7
	Product Not Used	1,264	39,157	31.0	18.3	25.3	23.5	27.1
Southern States	Product Used	400	22,820	57.1	22.8	22.3	19.6	25.0
	Product Not Used	733	12,024	16.4	4.6	19.3	17.3	21.2

## Comments About This Data

## Relevant Links, References, and Citations

Funded By:



United States  
Department of  
Agriculture

National Institute  
of Food  
and Agriculture

This information is for educational purposes only. References to commercial products or trade names do not imply endorsement by the Bee Informed Partnership or its members. The results presented here are the summary of the population who responded. The sample may not be representative of the beekeeping population at large. These results simply highlight differences in the sample population. The results cannot be considered conclusive, causative, protective, or attest to product efficacy or lack of efficacy.



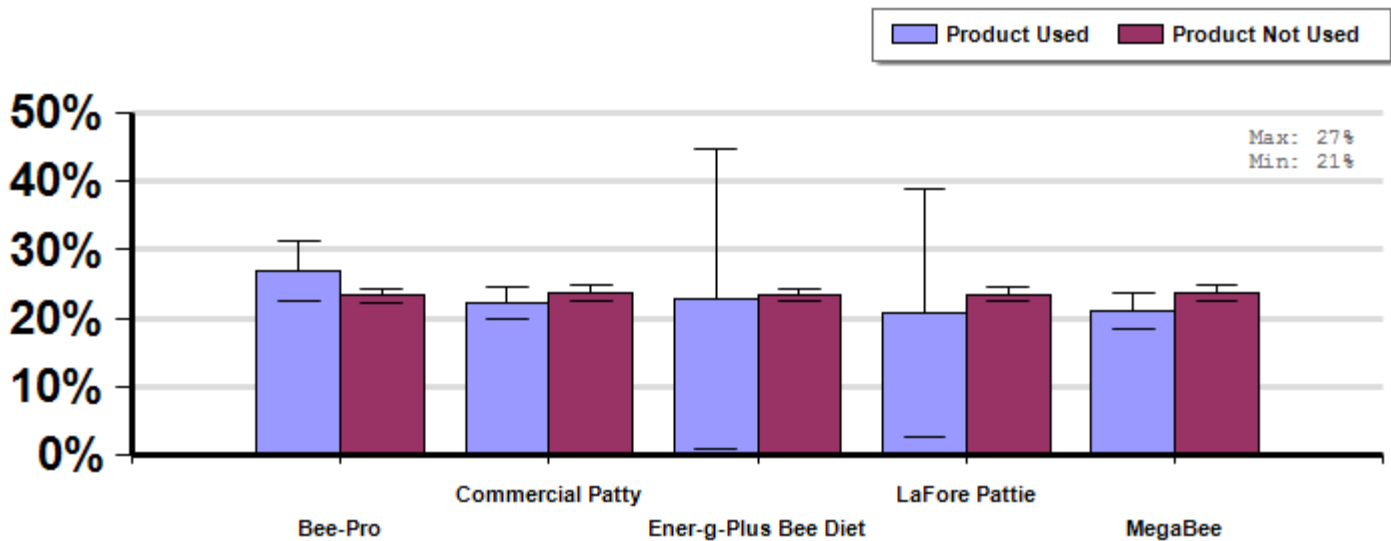
## Protein Feed Use By Product

### Winter

Report ID: 161-2012

A comparison of winter mortality among those who indicated they did not feed their colonies a specific type of protein feed (but may or may not have fed another type of protein feed) with those who indicated they fed a specific type of protein feed to a majority of their colonies, at least once between April, 2011 and March, 2012. Protein feed included: Self-made protein feed containing pollen, Self-made protein feed without real pollen, Bee Pro, MegaBee, Global Patties, and other Commercial protein feeds.

No Significant Differences



### Interpretation

No differences between groups.

### Survey Question

Which, if any of the following, did you apply to a majority of your colonies between April 1, 2011 and March, 2012?

- Self-made protein feed containing pollen
- Self-made protein feed without real pollen
- Bee Pro
- MegaBee
- Global Patties
- Other Commercial protein feeds

		Total Number of Respondents Providing Valid Responses	Total Number of Colonies Managed	Average Number of Colonies Managed		Average Colony Loss		
				Mean	Standard Error	Mean(%)	Lower 95% CI	Upper 95% CI
Bee-Pro	Product Used	156	37,594	241.0	82.5	26.9	22.5	31.2
	Product Not Used	3,453	195,664	56.7	11.6	23.3	22.3	24.3
Commercial Patty	Product Used	570	74,749	131.1	31.6	22.3	20.1	24.5
	Product Not Used	3,039	158,509	52.2	12.6	23.7	22.6	24.8
Ener-g-Plus Bee Diet	Product Used	7	115	16.4	9.7	22.8	1.1	44.6
	Product Not Used	3,602	233,143	64.7	11.7	23.5	22.5	24.4
LaFore Pattie	Product Used	12	25,297	2108.1	737.7	20.7	2.6	38.8
	Product Not Used	3,597	207,961	57.8	11.3	23.5	22.5	24.5
MegaBee	Product Used	403	20,757	51.5	18.1	21.1	18.5	23.7
	Product Not Used	3,206	212,501	66.3	13.0	23.8	22.7	24.8

## Comments About This Data

## Relevant Links, References, and Citations

Funded By:



United States  
Department of  
Agriculture

National Institute  
of Food  
and Agriculture

This information is for educational purposes only. References to commercial products or trade names do not imply endorsement by the Bee Informed Partnership or its members. The results presented here are the summary of the population who responded. The sample may not be representative of the beekeeping population at large. These results simply highlight differences in the sample population. The results cannot be considered conclusive, causative, protective, or attest to product efficacy or lack of efficacy.