



The Bee Informed Partnership
Management Survey Results (2011)
Respondent Profile

BeeInformed.org

Release Date: March 1, 2012

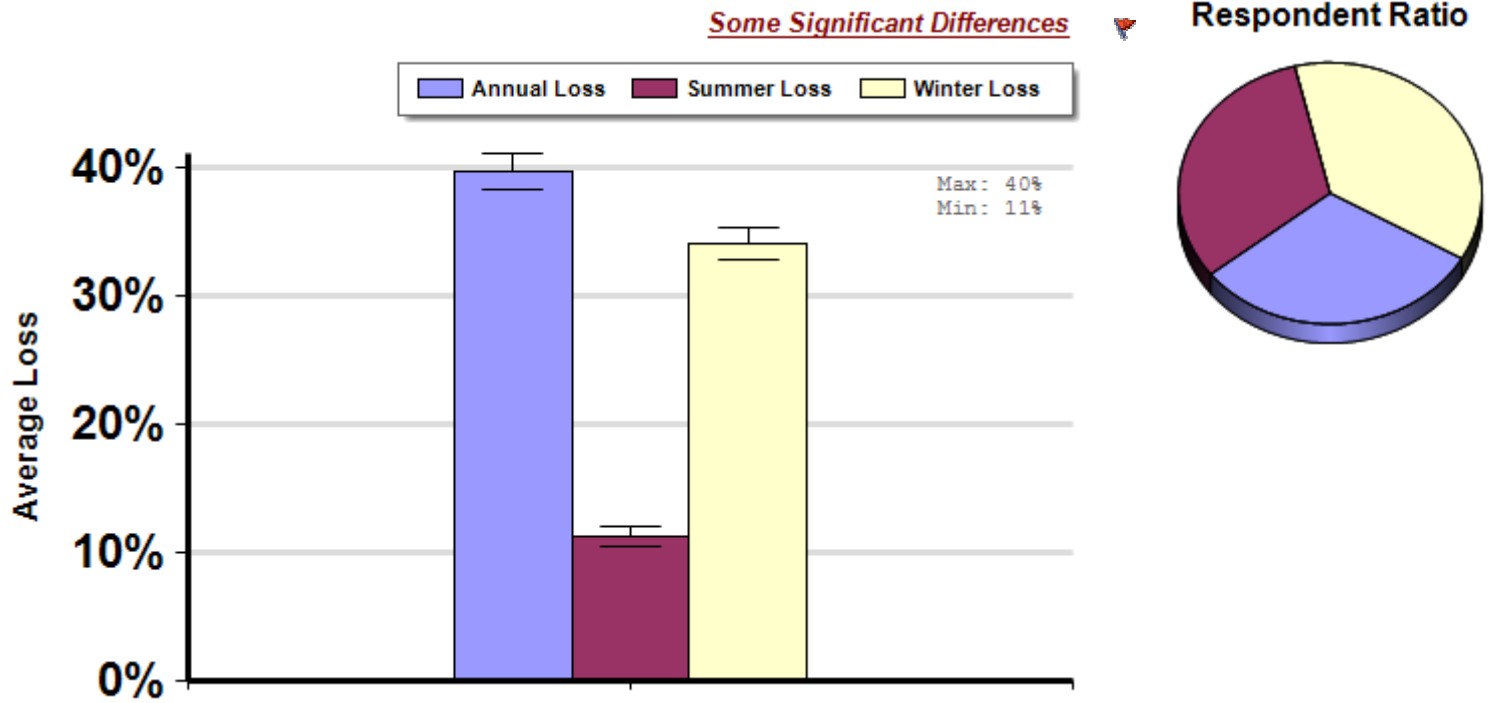


Losses suffered by all respondent beekeepers over the season.

“Summer Losses” are those suffered between April 1 2010 and Oct 1 2010.
 “Winter Losses” are those suffered between Oct 1 2010 and April 1 2011.
 “Annual Losses” are the sum of both Summer and Winter losses.

Over All

Report ID: 5



Interpretation

Not surprisingly, most losses are reported to occur over the winter season, although summer losses are not insignificant.

Survey Question

Several questions used

	Total Number of Respondents Providing Valid Responses	Total Number of Colonies Managed	Average Colony Loss			Total Colony Loss		
			Mean	Lower 95% CI	Upper 95% CI	Total	Lower CI	Upper CI
Annual Loss	2,551	154,371	39.8%	38.4%	41.1%	38.0%	37.1%	39.0%
Summer Loss	2,619	160,932	11.2%	10.5%	12.0%	18.3%	17.7%	18.9%
Winter Loss	3,050	270,118	34.1%	32.8%	35.4%	26.6%	25.7%	27.5%

Comments About This Data

Average Losses are the average total loss of all operations. This metric is used to compare populations with different risk factor exposure.

Relevant Links, References, and Citations

Funded By:



United States
Department of
Agriculture

National Institute
of Food
and Agriculture

This information is for educational purposes only. References to commercial products or trade names do not imply endorsement by the Bee Informed Partnership or its members. The results presented here are the summary of the population who responded. The sample may not be representative of the beekeeping population at large. These results simply highlight differences in the sample population. The results cannot be considered conclusive, causative, protective, or attest to product efficacy or lack of efficacy.



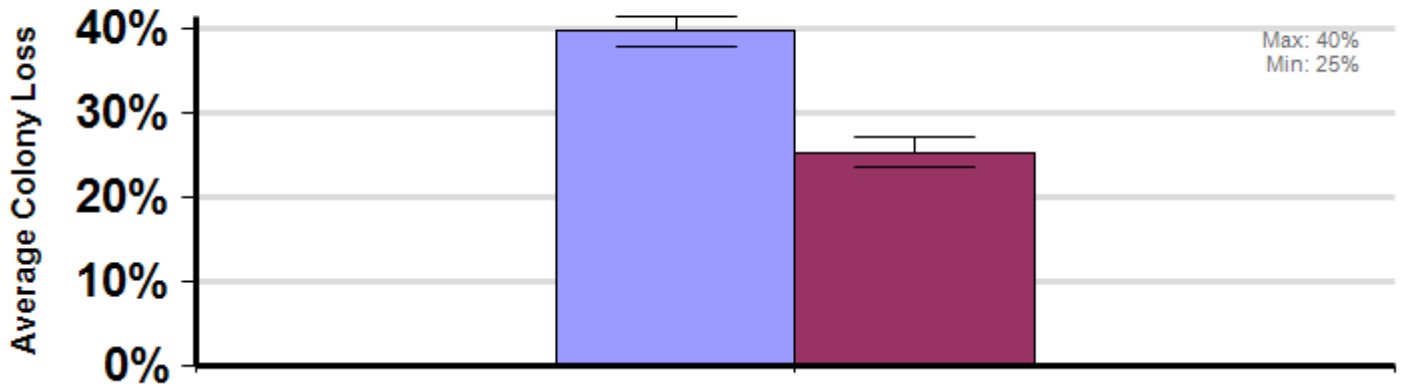
Summary Winter Loss in Northern and Southern States Excluding Multiregional Operations

Average loss in beekeeping operations that maintained colonies exclusively in northern states (CO, CT, DE, IA, ID, IL, IN, KS, MA, MD, ME, MI, MN, MS, MT, NB, ND, NH, NJ, NY, OH, OR, PA, RI, SD, VT, WA, WI, WY) and Southern states (AL, AR, AZ, CA, FL, GA, KY, LA, MS, NC, NM, NV, OK, SC, TN, TX, UT, VA, WV). Losses in operations that operate in both northern and southern states are not presented.

Winter

Report ID: 29

Some Significant Differences



Respondent Ratio



Interpretation

Beekeepers who kept bees in northern states lost, on average, 16 more colonies per hundred, than beekeepers who kept bees exclusively in southern states.

Survey Question

In which state(s) did you keep bees between 1 April 2010 and 1 April 2011?

	Total Number of Respondents Providing Valid Responses	Total Number of Colonies Managed	Average Colony Loss			Percentage of respondents, by operation size, in each region		
			Mean	Lower 95% CI	Upper 95% CI	Backyard	Sideline	Commercial
Northern	1,769	24,057	39.7%	38.0%	41.5%	60.1%	56.7%	17.6%
Southern	1,191	42,957	25.3%	23.5%	27.1%	39.9%	43.3%	82.4%

Comments About This Data

Relevant Links, References, and Citations

Funded By:



United States
Department of
Agriculture

National Institute
of Food
and Agriculture

This information is for educational purposes only. References to commercial products or trade names do not imply endorsement by the Bee Informed Partnership or its members. The results presented here are the summary of the population who responded. The sample may not be representative of the beekeeping population at large. These results simply highlight differences in the sample population. The results cannot be considered conclusive, causative, protective, or attest to product efficacy or lack of efficacy.



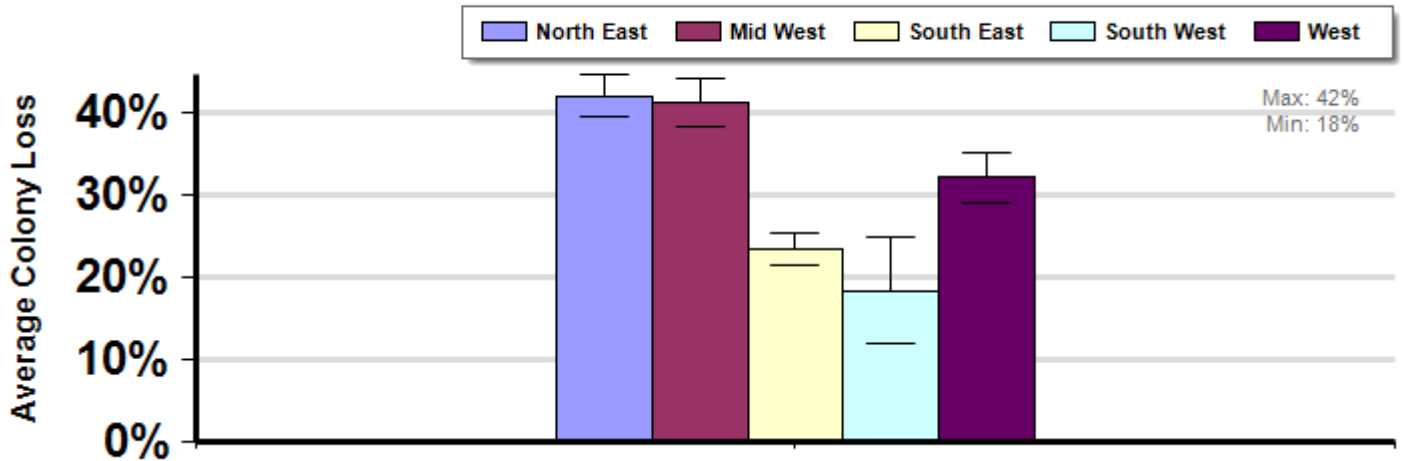
Losses in Geographic Sub-Regions Excluding Multiregional Operations

Average loss suffered by beekeepers who kept their colonies exclusively in different geographic sub-regions of the US including the Northeast (CT, DE, MA, MD, ME, NH, NJ, NY, PA, RI, VT), Midwest (IA, IL, IN, KS, MI, MN, MO, ND, NE, OH, SD, WI), South-East (AL, AR, FL, GA, KY, LA, MS, NC, SC, TN, VA, WV), Southwest (AZ, NM, OK, TX), and West (CA, CO, ID, MT, NV, OR, UT, WA, WY). Beekeepers who managed bees in more than one region are excluded.

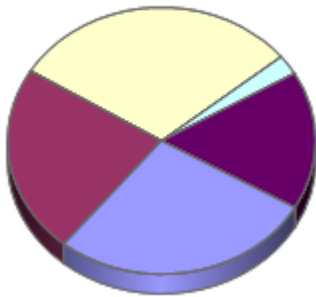
Winter

Report ID: 26

Some Significant Differences



Respondent Ratio



Interpretation

Beekeepers keeping bees in the north east and mid-west lost more colonies on average than did beekeepers keeping bees in any other region. Beekeepers keeping bees in the western region lost more colonies on average than those beekeepers who kept bees in the south east and south west.

Survey Question

In which state(s) did you keep bees between 1 April 2010 and 1 April 2011?

	Total Number of Respondents Providing Valid Responses	Total Number of Colonies Managed	Average Colony Loss			Percentage of respondents, by operation size, in each region		
			Mean	Lower 95% CI	Upper 95% CI	Backyard	Sideline	Commercial
North East	818	8,726	41.9%	39.3%	44.5%	27.8%	24.8%	5.3%
Mid West	678	9,714	41.1%	38.3%	44.0%	23.0%	23.8%	5.3%
South East	900	8,465	23.4%	21.4%	25.4%	30.7%	27.7%	0.0%
South West	72	2,185	18.4%	11.9%	24.8%	2.4%	4.0%	5.3%

West	497	50,474	32.0%	29.0%	35.0%	16.2%	19.8%	84.2%
------	-----	--------	-------	-------	-------	-------	-------	-------

Comments About This Data

Relevant Links, References, and Citations

Funded By:



United States
Department of
Agriculture

National Institute
of Food
and Agriculture

This information is for educational purposes only. References to commercial products or trade names do not imply endorsement by the Bee Informed Partnership or its members. The results presented here are the summary of the population who responded. The sample may not be representative of the beekeeping population at large. These results simply highlight differences in the sample population. The results cannot be considered conclusive, causative, protective, or attest to product efficacy or lack of efficacy.

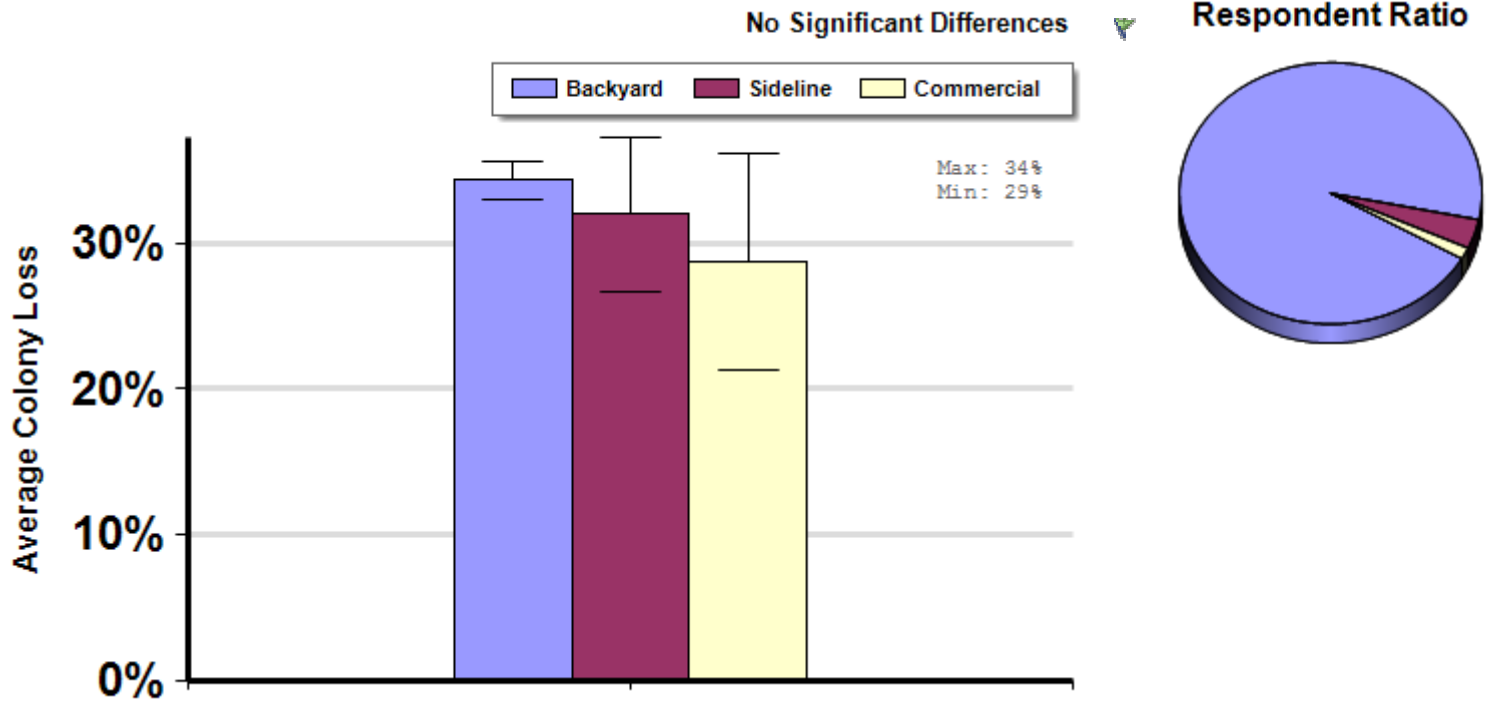


Loss By Operation Size

Backyard beekeepers managed fewer than 50 colonies.
 Sideline beekeepers managed between 51 and 500 colonies.
 Commercial beekeepers managed more than 500 colonies.

Winter

Report ID: 8



Interpretation

Average loss was not different between groups.

Survey Question

	Total Number of Respondents Providing Valid Responses	Total Number of Colonies Managed	Average Colony Loss			Total Colony Loss		
			Mean	Lower 95% CI	Upper 95% CI	Total	Lower CI	Upper CI
Backyard	2,895	19,264	34.3%	33.0%	35.6%	36.4%	35.3%	37.6%
Sideline	111	15,058	31.9%	26.7%	37.2%	33.2%	28.3%	38.5%
Commercial	44	235,796	28.7%	21.3%	36.1%	25.4%	18.8%	33.4%

Comments About This Data

Management practices are dictated by operation size. We planned to analyze risk factor variables by operation size.

However, the level of participation by larger scale beekeepers was low. We plan to actively recruit members of this segment of the apiary industry in the future. We recognize that some of the issues preventing participation are due to survey timing and hope to address this by extending the time beekeepers can respond to survey. Further, in the future we plan to develop tools to help prevent invalid data entry.

Relevant Links, References, and Citations

Funded By:



United States
Department of
Agriculture

National Institute
of Food
and Agriculture

This information is for educational purposes only. References to commercial products or trade names do not imply endorsement by the Bee Informed Partnership or its members. The results presented here are the summary of the population who responded. The sample may not be representative of the beekeeping population at large. These results simply highlight differences in the sample population. The results cannot be considered conclusive, causative, protective, or attest to product efficacy or lack of efficacy.

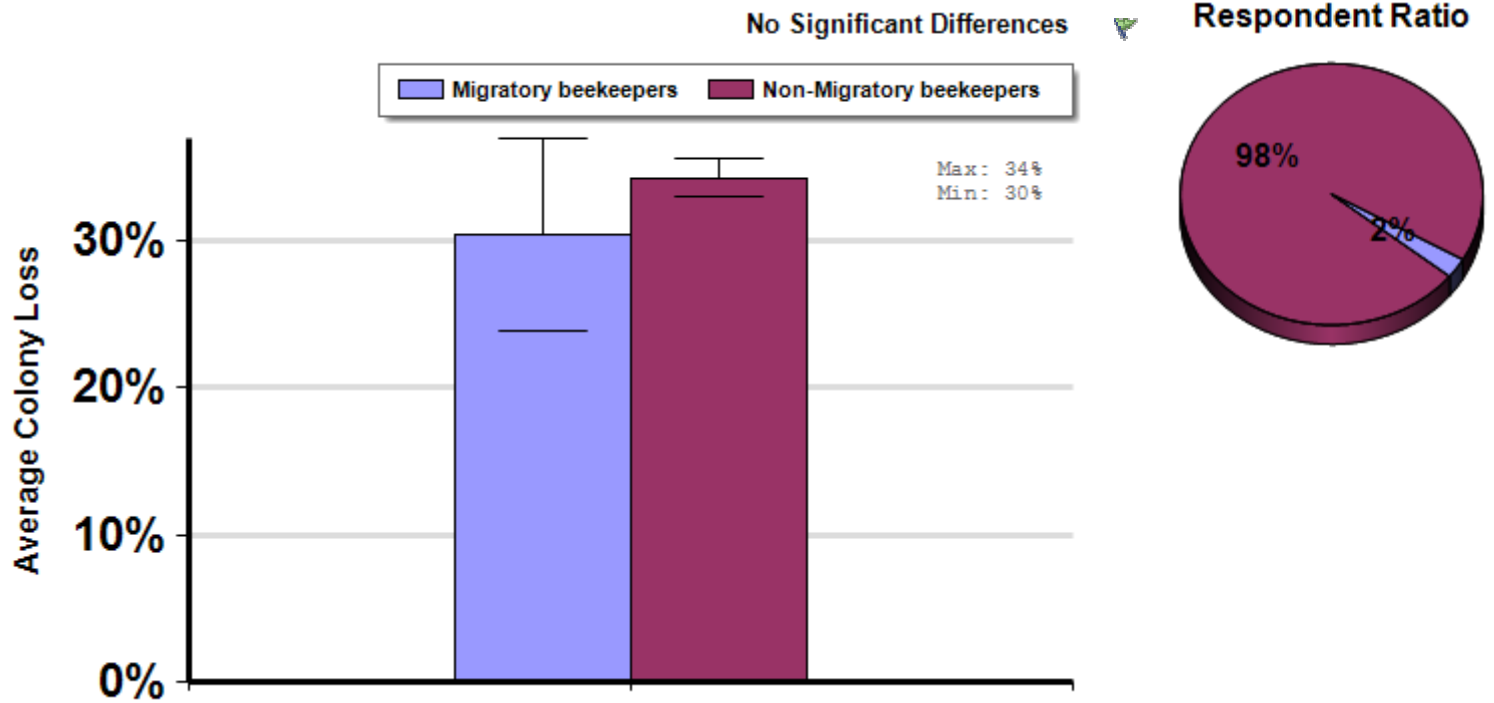


Reported Average Loss By Operation Type (Migratory)

Winter

Report ID: 11

Migratory beekeepers were beekeepers who moved a majority of their colonies, at least once, across state lines.



Interpretation

There was no difference between average losses between groups.

Survey Question

Several questions used.

	Total Number of Respondents Providing Valid Responses	Total Number of Colonies Managed	Average Colony Loss		
			Mean	Lower 95% CI	Upper 95% CI
Migratory beekeepers	75	209,162	30.3%	23.8%	36.9%
Non-Migratory beekeepers	2,975	60,956	34.2%	32.9%	35.5%

Comments About This Data

There were few migratory beekeepers but they managed the vast majority of colonies represented in the respondent population.

Relevant Links, References, and Citations

Funded By:



United States
Department of
Agriculture

National Institute
of Food
and Agriculture

This information is for educational purposes only. References to commercial products or trade names do not imply endorsement by the Bee Informed Partnership or its members. The results presented here are the summary of the population who responded. The sample may not be representative of the beekeeping population at large. These results simply highlight differences in the sample population. The results cannot be considered conclusive, causative, protective, or attest to product efficacy or lack of efficacy.

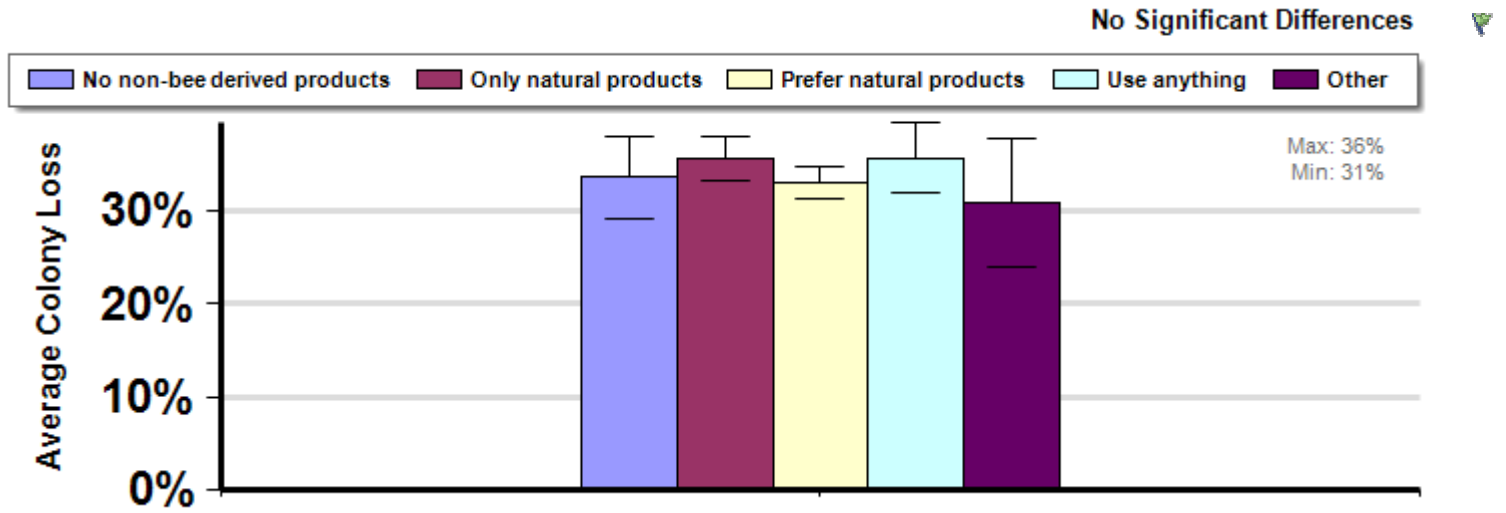


Average Loss in operations with different Beekeeping Management Philosophies

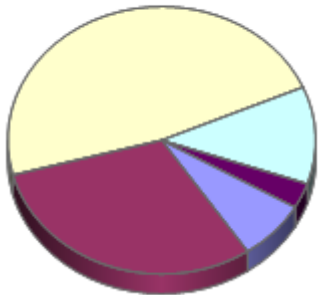
Average loss suffered by beekeepers who had different beekeeping management philosophies.

Winter

Report ID: 20



Respondent Ratio



Interpretation

No differences were found between groups.

Survey Question

12. When choosing treatment or feeding strategies for your colonies, would you say that you are:
(options listed)

	Total Number of Respondents Providing Valid Responses	Total Number of Colonies Managed	Average Colony Loss			Percentage of respondents in different operation size classifications who indicated a particular management philosophy		
			Mean	Lower 95% CI	Upper 95% CI	Backyard	Sideline	Commercial
No non-bee derived products	221	3,590	33.6%	29.2%	38.1%	7.4%	6.3%	2.3%
Only natural products	921	10,465	35.6%	33.2%	38.0%	30.9%	23.4%	4.5%
Prefer natural products	1,453	82,454	33.1%	31.3%	34.9%	47.8%	45.9%	45.5%
Use anything	359	171,594	35.7%	31.9%	39.5%	11.1%	16.2%	47.7%
Other	93	2,000	30.8%	23.9%	37.8%	2.9%	8.1%	0.0%

Comments About This Data

Relevant Links, References, and Citations

Funded By:



United States
Department of
Agriculture

National Institute
of Food
and Agriculture

This information is for educational purposes only. References to commercial products or trade names do not imply endorsement by the Bee Informed Partnership or its members. The results presented here are the summary of the population who responded. The sample may not be representative of the beekeeping population at large. These results simply highlight differences in the sample population. The results cannot be considered conclusive, causative, protective, or attest to product efficacy or lack of efficacy.



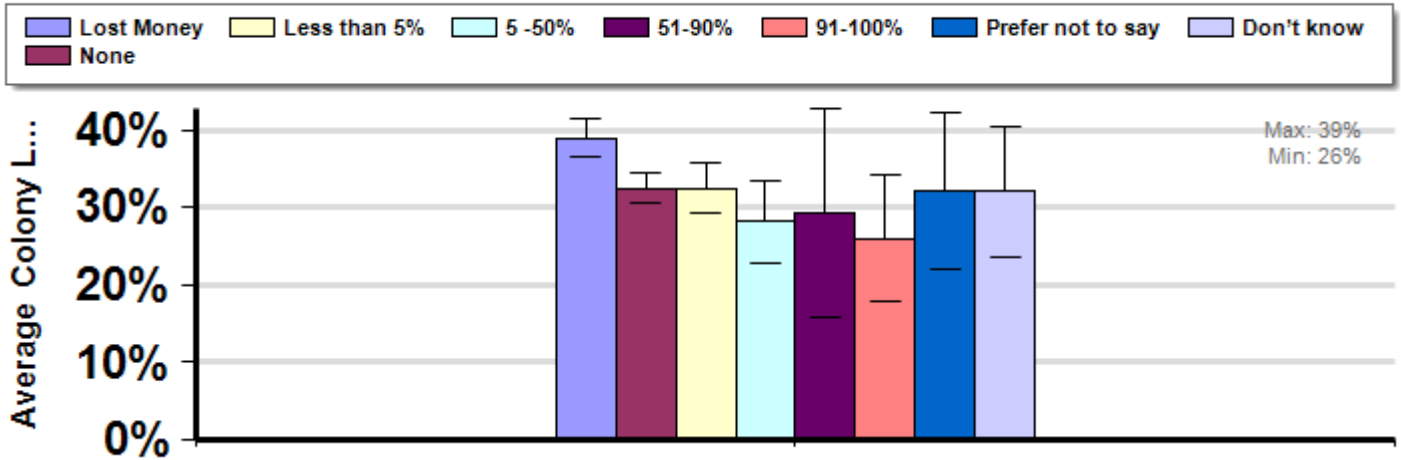
Average Loss By Percent Income Derived From Beekeeping

Winter

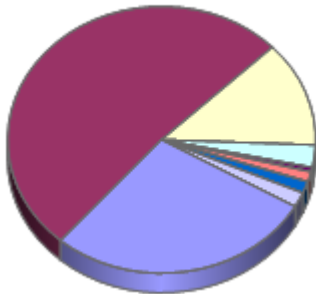
Average loss suffered by proportion of total income derived from beekeeping activity differed.

Report ID: 17

Some Significant Differences



Respondent Ratio



Interpretation

Beekeepers who reported losing money keeping bees lost more colonies than beekeepers who derived no income from keeping bees, made less than 51% of their income from keeping bees, and those that derived more than 90% of their income from keeping bees.

Survey Question

10. What percentage of your annual income was derived from your beekeeping activities last year?

	Total Number of Respondents Providing Valid Responses	Total Number of Colonies Managed	Average Colony Loss			Percentage of respondents in each operation size classification who indicated a particular proportion of their income was derived by beekeeping activities		
			Mean	Lower 95% CI	Upper 95% CI	Backyard	Sideline	Commercial
Lost Money	855	13,135	39.0%	36.5%	41.4%	28.5%	24.3%	6.8%
None	1,566	8,346	32.5%	30.7%	34.4%	53.8%	9.9%	0.0%
Less than 5%	391	5,717	32.5%	29.4%	35.7%	12.9%	15.3%	0.0%
5-50%	83	7,060	28.2%	22.9%	33.5%	1.7%	30.6%	2.3%
51-90%	16	18,632	29.4%	15.9%	42.9%	0.1%	4.5%	18.2%

91-100%	37	209,398	26.0%	18.0%	34.1%	0.1%	5.4%	65.9%
Prefer not to say	44	7,060	32.2%	22.0%	42.4%	1.2%	6.3%	6.8%
Don't know	55	754	32.1%	23.7%	40.6%	1.8%	3.6%	0.0%



Comments About This Data



Relevant Links, References, and Citations

Funded By:



United States
Department of
Agriculture

National Institute
of Food
and Agriculture

This information is for educational purposes only. References to commercial products or trade names do not imply endorsement by the Bee Informed Partnership or its members. The results presented here are the summary of the population who responded. The sample may not be representative of the beekeeping population at large. These results simply highlight differences in the sample population. The results cannot be considered conclusive, causative, protective, or attest to product efficacy or lack of efficacy.



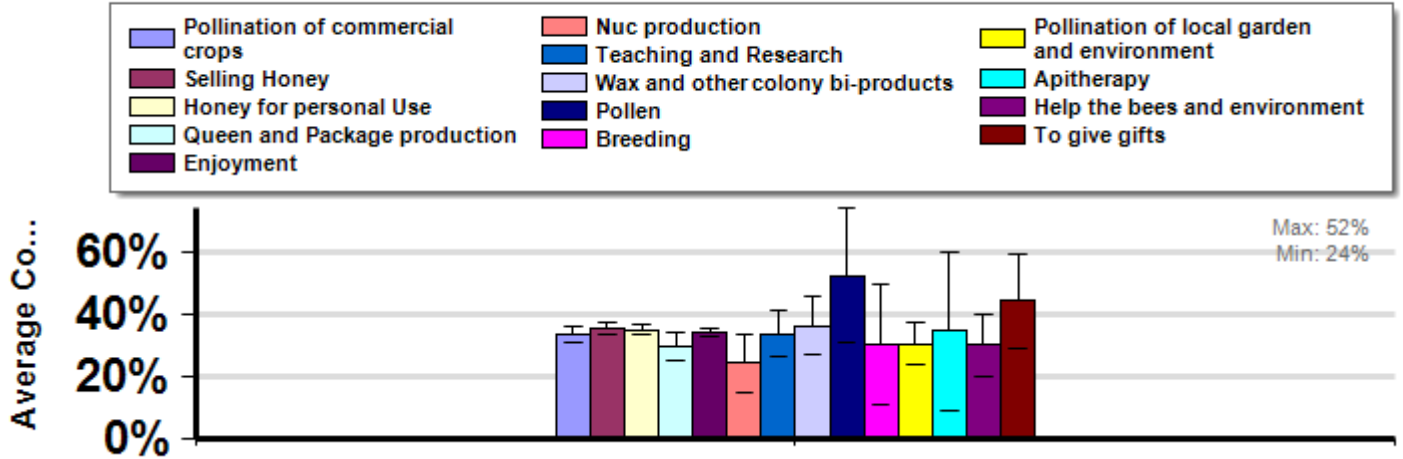
Average Loss By Reason Responding Beekeepers Indicated they Kept Bees

Average loss suffered by beekeepers who indicated the reason or reasons they kept bees

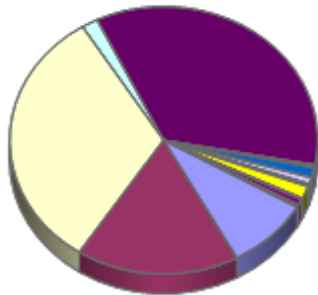
Winter

Report ID: 14

Some Significant Differences



Respondent Ratio



Interpretation

Beekeepers who indicated they kept bees to produce "nucs" lost fewer colonies than those who indicated they kept bees to make honey for sale and/or personal use.

Survey Question

11. Over the last year (1 April 2010 to 1 April 2011), which of the following activities did you use your colonies for (check all that apply)?

	Total Number of Respondents Providing Valid Responses	Total Number of Colonies Managed	Average Colony Loss			Percentage of responding beekeepers in each operations size classification who indicated a particular reason they kept bees. Respondents could indicate more than one reason.		
			Mean	Lower 95% CI	Upper 95% CI	Backyard	Sideline	Commercial
Pollination of commercial crops	627	235,759	33.4%	30.7%	36.1%	18.7%	43.1%	93.2%
Selling Honey	1,223	255,119	35.5%	33.7%	37.3%	37.6%	87.2%	95.5%
Honey for personal Use	2,280	67,590	35.1%	33.7%	36.6%	76.2%	57.8%	40.9%

Queen and Package production	122	86,952	29.6%	25.0%	34.3%	2.6%	27.5%	40.9%
Enjoyment	2,507	36,811	34.0%	32.6%	35.4%	84.5%	57.8%	11.4%
Nuc production	25	1,797	24.2%	14.8%	33.6%	0.6%	7.3%	2.3%
Teaching and Research	85	998	33.6%	26.3%	41.0%	2.8%	3.7%	0.0%
Wax and other colony bi-products	58	3,878	36.3%	27.0%	45.5%	1.9%	0.9%	2.3%
Pollen	11	361	52.5%	30.9%	74.0%	0.3%	0.9%	0.0%
Breeding	12	243	30.4%	11.1%	49.7%	0.4%	0.9%	0.0%
Pollination of local garden and environment	109	434	30.6%	23.6%	37.6%	3.8%	0.0%	0.0%
Apitherapy	12	66	34.6%	9.1%	60.1%	0.4%	0.0%	0.0%
Help the bees and environment	51	354	30.0%	19.8%	40.2%	1.7%	0.9%	0.0%
To give gifts	21	122	44.2%	29.0%	59.5%	0.7%	0.0%	0.0%

Comments About This Data

Relevant Links, References, and Citations

Funded By:



United States
Department of
Agriculture

National Institute
of Food
and Agriculture

This information is for educational purposes only. References to commercial products or trade names do not imply endorsement by the Bee Informed Partnership or its members. The results presented here are the summary of the population who responded. The sample may not be representative of the beekeeping population at large. These results simply highlight differences in the sample population. The results cannot be considered conclusive, causative, protective, or attest to product efficacy or lack of efficacy.