



The Bee Informed Partnership  
Management Survey Results (2011)  
Feeding: Protein

---

[BeeInformed.org](http://BeeInformed.org)

Funded by:



United States  
Department of  
Agriculture

National Institute  
of Food  
and Agriculture

Release Date: March 30 2012

This information is for educational purposes only. References to commercial products or trade names do not imply endorsement by the Bee Informed Partnership or its members. The results presented here are the summary of the population who responded. The sample may not be representative of the beekeeping population at large. These results simply highlight differences in the sample population. The results cannot be considered conclusive, causative, protective, or attest to product efficacy or lack of efficacy.

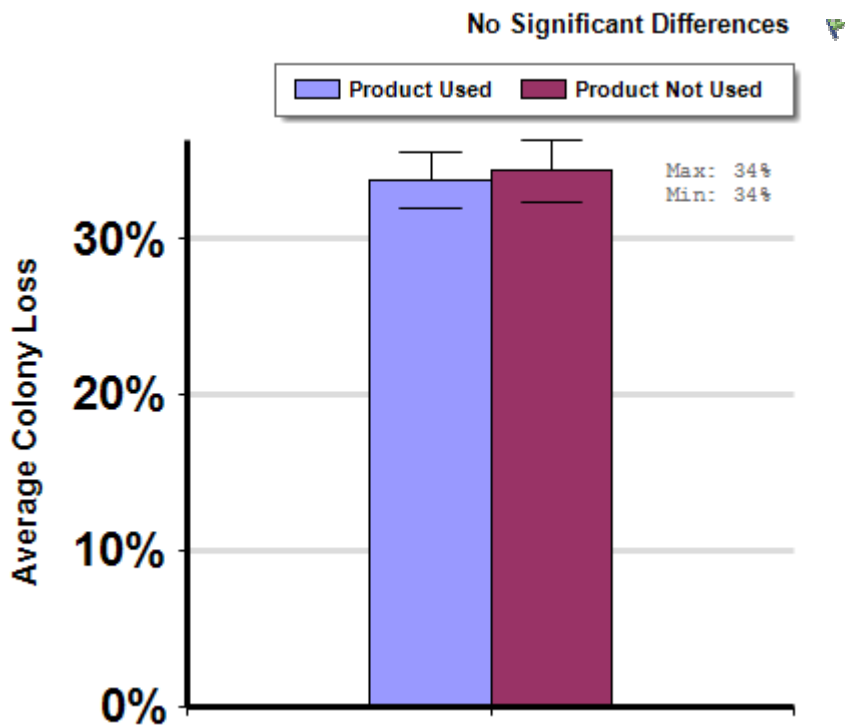


## Protein Feed Use

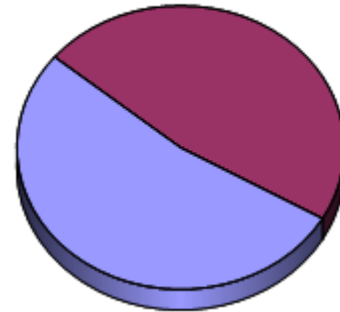
A comparison of winter mortality among those who indicated they did not feed and those who did feed a majority of their colonies, at least once between April 2010 and March 2011, with a protein feed. Protein feed included: Self-made protein feed containing pollen, Self-made protein feed without real pollen, Bee Pro, MegaBee, Global Patties, and other Commercial protein feed.

### Winter

Report ID: 155



### Respondent Ratio



### Interpretation

Beekeepers who reported feeding their colonies protein feed did not report losing more or fewer colonies than those who did not report feeding protein. A majority of beekeepers reported feeding their colonies protein.

### Survey Question

24. For the products listed below, indicate which months you fed the product to a majority of your colonies.

- Self-made protein feed containing pollen
- Self-made protein feed without real pollen
- Bee Pro
- MegaBee
- Global Patties

25. Did you use any other feed products or types in a majority of your colonies that was not listed in question 24 above?

Various Commercial Protein Feeds

	Total Number of Respondents Providing Valid Responses	Total Number of Colonies Managed	Average Number of Colonies Managed		Average Colony Loss		
			Mean	Standard Error	Mean(%)	Lower 95% CI	Upper 95% CI
Product Used	1,417	246,936	174.3	63.8	33.8	32.0	35.6
Product Not Used	1,272	20,721	16.3	6.2	34.4	32.3	36.4

---

## Comments About This Data

We did not collect data on how much or how frequently different feeds were applied. These factors may have an impact on this products effectiveness and we plan to collect this information next year.

---

## Relevant Links, References, and Citations

Funded By:



United States  
Department of  
Agriculture

National Institute  
of Food  
and Agriculture

This information is for educational purposes only. References to commercial products or trade names do not imply endorsement by the Bee Informed Partnership or its members. The results presented here are the summary of the population who responded. The sample may not be representative of the beekeeping population at large. These results simply highlight differences in the sample population. The results cannot be considered conclusive, causative, protective, or attest to product efficacy or lack of efficacy.



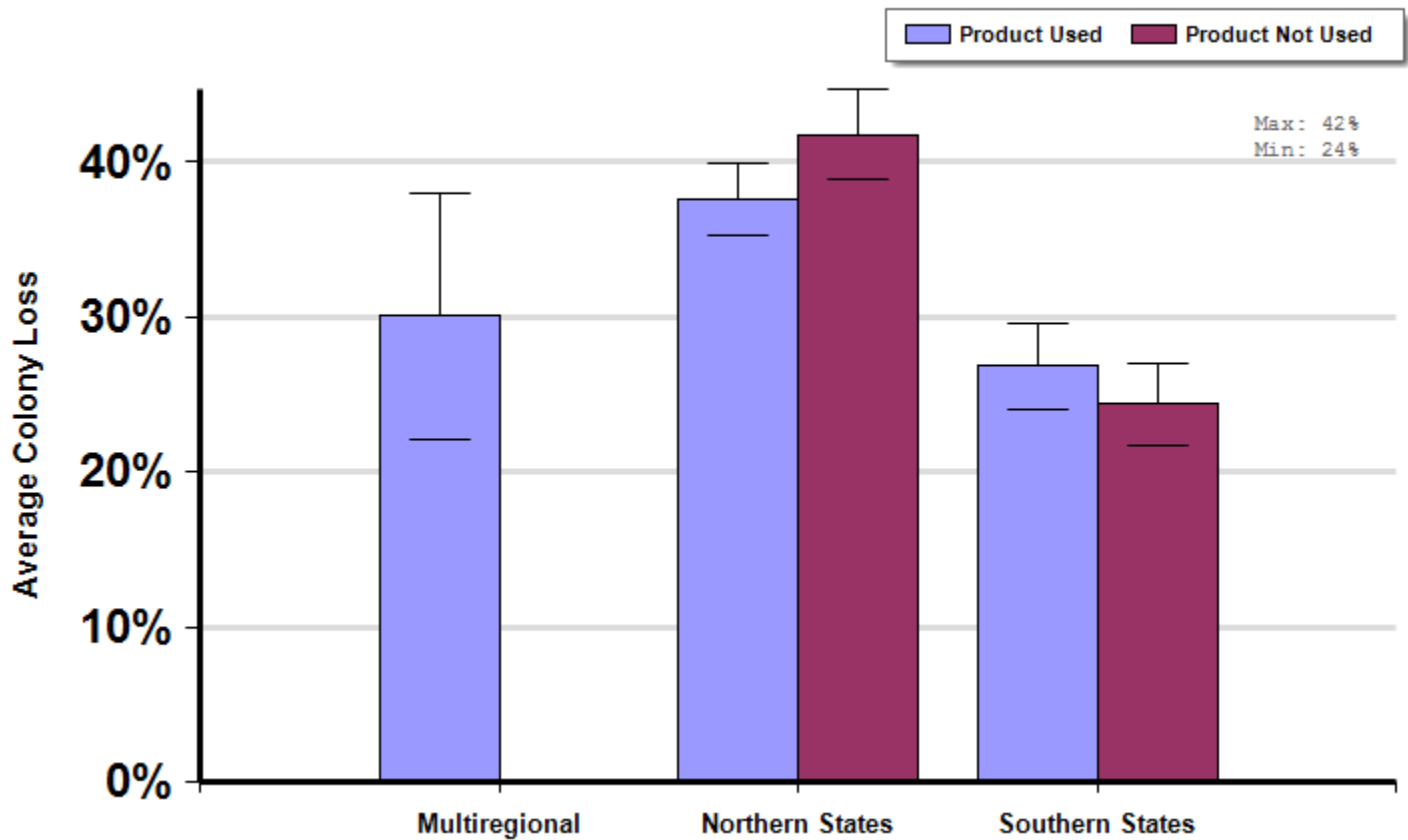
## Protein Feed Use By Region

A comparison of winter mortality among those who indicated they did not feed and those who did feed a majority of their colonies, at least once between April 2010 and March 2011, with a protein feed by region of operation. Protein feed included: Self-made protein feed containing pollen, Self-made protein feed without real pollen, Bee Pro, MegaBee, Global Patties, and other Commercial protein feeds.

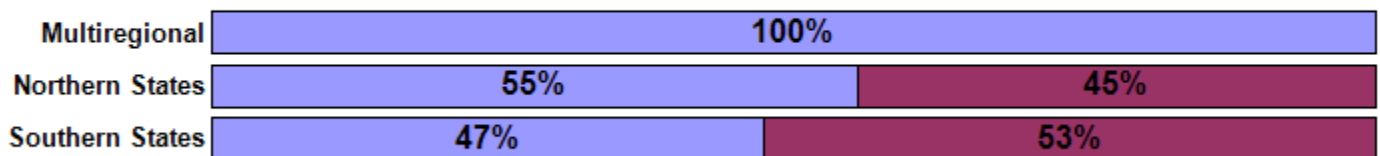
### Winter

Report ID: 158

No Significant Differences (within regions)



### Respondent Ratio



### Interpretation

No difference within groups.

### Survey Question

24. For the products listed below, indicate which months you fed the product to a majority of your colonies.  
Self-made protein feed containing pollen    Self-made protein feed without real pollen  
Bee Pro    MegaBee  
Global Patties

25. Did you use any other feed products or types in a majority of your colonies that was not listed in question 24 above?  
Various Commercial Protein Feed

		Total Number of Respondents Providing Valid Responses	Total Number of Colonies Managed	Average Number of Colonies Managed		Average Colony Loss		
				Mean	Standard Error	Mean(%)	Lower 95% CI	Upper 95% CI
Multiregional	Product Used	37	189,860	5131.4	2295.2	30.0	22.1	38.0
Northern States	Product Used	869	17,006	19.6	4.5	37.6	35.2	39.9
	Product Not Used	699	5,938	8.5	1.1	41.8	38.9	44.7
Southern States	Product Used	494	35,187	71.2	26.6	26.8	24.1	29.6
	Product Not Used	547	6,533	11.9	3.3	24.4	21.7	27.0

### Comments About This Data

We did not collect data on how much or how frequently different feeds were applied. These factors may have an impact on product effectiveness and we plan to collect this information in future years.

### Relevant Links, References, and Citations

Funded By:



United States  
Department of  
Agriculture

National Institute  
of Food  
and Agriculture

This information is for educational purposes only. References to commercial products or trade names do not imply endorsement by the Bee Informed Partnership or its members. The results presented here are the summary of the population who responded. The sample may not be representative of the beekeeping population at large. These results simply highlight differences in the sample population. The results cannot be considered conclusive, causative, protective, or attest to product efficacy or lack of efficacy.



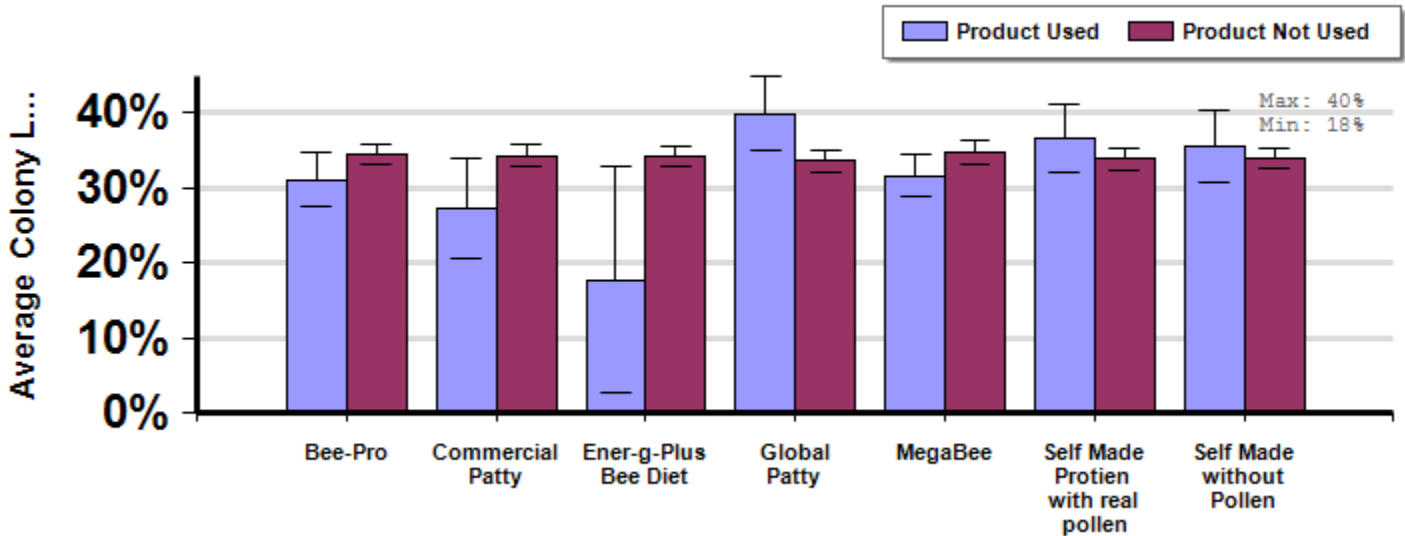
## Protein Feed Use By Product

A comparison of winter mortality among those who indicated they did not feed their colonies a specific type of protein feed (but may or may not have fed another type of protein feed) with those who indicated they fed a specific type of protein feed to a majority of their colonies, at least once between April 2010 and March 2011.

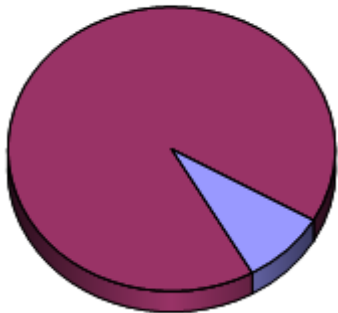
### Winter

Report ID: 161

*Some Significant Differences*



### Respondent Ratio



### Interpretation

**Beekeepers who reported feeding Ener-G-Plus Bee Diet lost fewer colonies over the winter than those who reported feeding another type of protein feed or no protein at all. THESE DATA SHOULD BE VIEWED WITH CAUTION as the number of respondents reporting use of the product was low, and the number of colonies they managed was low. This may have skewed the data, making it look like this product had an effect when it in fact did not. For all other products, there were no significant differences in winter mortality for those who reported using a product as compared to those who did not report using that product.**

### Survey Question

24. For the products listed below, indicate which months you fed the product to a majority of your colonies.

- Self-made protein feed containing pollen
- Self-made protein feed without real pollen
- Bee Pro
- MegaBee
- Global Patties

25. Did you use any other feed products or types in a majority of your colonies that was not listed in question 24 above?

- Various Commercial Protein Feed

		Total Number of Respondents Providing Valid Responses	Total Number of Colonies Managed	Average Number of Colonies Managed		Average Colony Loss		
				Mean	Standard Error	Mean(%)	Lower 95% CI	Upper 95% CI
Bee-Pro	Product Used	294	140,762	478.8	293.3	31.0	27.4	34.6
	Product Not Used	2,395	126,895	53.0	11.7	34.4	33.0	35.9
Commercial Patty	Product Used	86	18,397	213.9	106.1	27.3	20.6	33.9
	Product Not Used	2,603	249,260	95.8	34.7	34.3	32.9	35.7
Ener-g-Plus Bee Diet	Product Used	18	98	5.4	1.9	17.8	2.7	32.8
	Product Not Used	2,671	267,559	100.2	34.0	34.2	32.8	35.5
Global Patty	Product Used	214	15,993	74.7	33.4	39.9	34.9	44.8
	Product Not Used	2,475	251,664	101.7	36.6	33.6	32.2	35.0
MegaBee	Product Used	567	35,720	63.0	17.2	31.6	29.0	34.3
	Product Not Used	2,122	231,937	109.3	42.5	34.7	33.2	36.3
Self Made Protien with real pollen	Product Used	232	43,833	188.9	71.2	36.5	32.0	41.1
	Product Not Used	2,457	223,824	91.1	36.3	33.8	32.4	35.2
Self Made without Pollen	Product Used	185	147,892	799.4	473.3	35.6	30.7	40.4
	Product Not Used	2,504	119,765	47.8	9.1	34.0	32.6	35.4

## Comments About This Data

Response rate for use of Ener-G-Plus was low so those results should be viewed with caution. We did not collect data on how much or how frequently different feeds were applied. These factors may have an impact on product effectiveness and we plan to collect this information in future years.

## Relevant Links, References, and Citations

Funded By:



United States  
Department of  
Agriculture

National Institute  
of Food  
and Agriculture

This information is for educational purposes only. References to commercial products or trade names do not imply endorsement by the Bee Informed Partnership or its members. The results presented here are the summary of the population who responded. The sample may not be representative of the beekeeping population at large. These results simply highlight differences in the sample population. The results cannot be considered conclusive, causative, protective, or attest to product efficacy or lack of efficacy.