



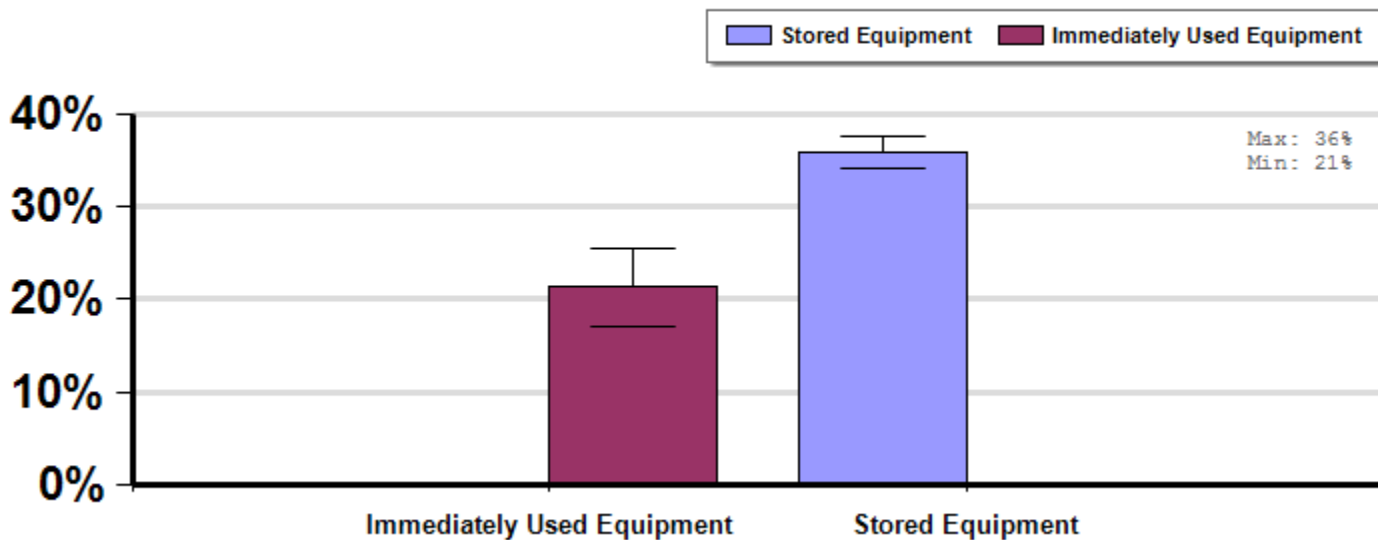
# Treatment of Dead Out Equipment

## Winter

Report ID: 65-2012

Average winter colony mortality reported by beekeepers who stored or did not store their equipment between April, 2011 and March, 2012.

No Significant Differences



## Interpretation

Beekeepers who did not report storing their used equipment saw 14.6 fewer overwintered colonies lost per 100 managed colonies, or an average of 40.6% less than those that reported not using storing equipment. No differences detected between those who immediately used or did not immediately use equipment.

## Survey Question

Generally, when you found a dead and/or weak colony in your operation over the last year you would:

- Immediately replace the dead colony by splitting frames of bees/brood from other strong colonies into the dead out equipment
- Pack up the dead equipment and store it for re-use at a later date
- A mixture of both, I immediately replaced some and packed up others
- Did not find dead colonies
- Other, please specify

		Total Number of Respondents Providing Valid Responses	Total Number of Colonies Managed	Average Number of Colonies Managed		Average Colony Loss		
				Mean	Standard Error	Mean(%)	Lower 95% CI	Upper 95% CI
Stored Equipment	Stored Equipment	1,358	98,913	72.8	22.4	35.9	34.2	37.5
Immediately Used Equipment	Immediately Used Equipment	151	29,105	192.7	86.9	21.3	17.1	25.5

## Comments About This Data

### Relevant Links, References, and Citations

Funded By:



United States  
Department of  
Agriculture

National Institute  
of Food  
and Agriculture

This information is for educational purposes only. References to commercial products or trade names do not imply endorsement by the Bee Informed Partnership or its members. The results presented here are the summary of the population who responded. The sample may not be representative of the beekeeping population at large. These results simply highlight differences in the sample population. The results cannot be considered conclusive, causative, protective, or attest to product efficacy or lack of efficacy.



# Started or Obtained New Colonies

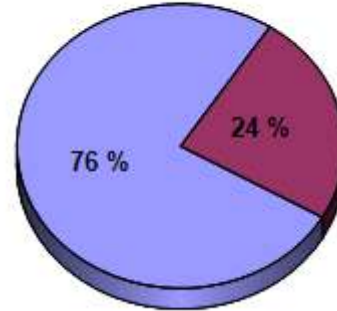
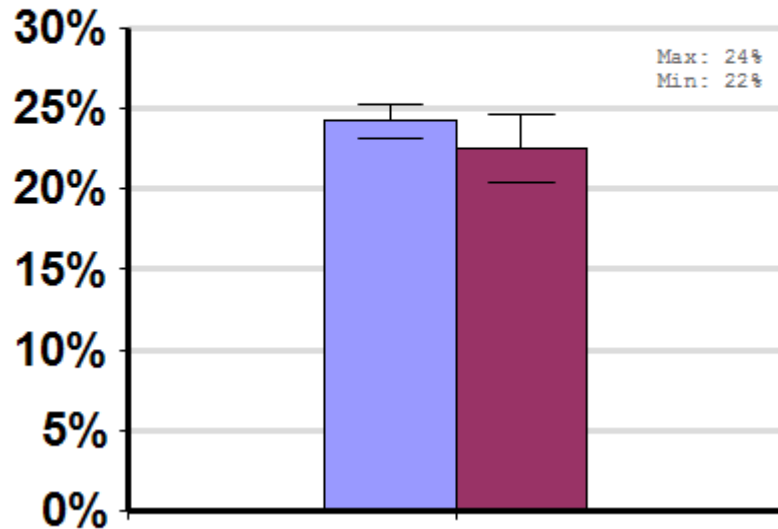
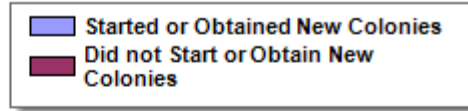
Average winter colony mortality suffered by beekeepers who reported they did not start or obtain new colonies, between April, 2011 and March, 2012.

## Winter

Report ID: 233-2012

No Significant Differences

Respondent Ratio



### Interpretation

No differences between groups.

## Survey Question

Did you start or obtain any new colonies between 1 April, 2011 and March, 2012?

		Total Number of Respondents Providing Valid Responses	Total Number of Colonies Managed	Average Number of Colonies Managed		Average Colony Loss		
				Mean	Standard Error	Mean(%)	Lower 95% CI	Upper 95% CI
	Did not Start or Obtain New Colonies	916	24,054	26.3	13.0	22.5	20.4	24.6
	Started or Obtained New Colonies	2,876	215,761	75.0	14.2	24.2	23.1	25.3

## Comments About This Data

---

## Relevant Links, References, and Citations

Funded By:



United States  
Department of  
Agriculture

National Institute  
of Food  
and Agriculture

This information is for educational purposes only. References to commercial products or trade names do not imply endorsement by the Bee Informed Partnership or its members. The results presented here are the summary of the population who responded. The sample may not be representative of the beekeeping population at large. These results simply highlight differences in the sample population. The results cannot be considered conclusive, causative, protective, or attest to product efficacy or lack of efficacy.