



Crops Close to Colonies During Honey Flow

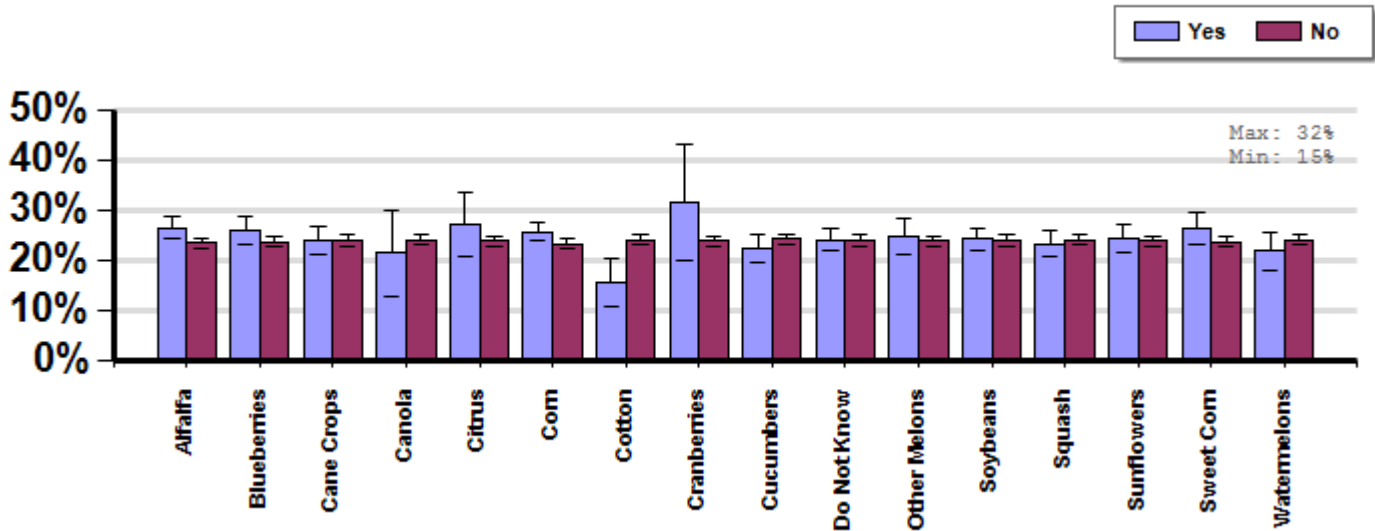
Management Survey 2012

Average winter colony mortality reported by beekeepers whose colonies were in proximity to various crops while they were producing honey between April, 2011 and March, 2012.

Winter

Report ID: 86-2012

Some Significant Differences



Interpretation

Beekeepers who reported positioning their colonies in close proximity to cotton reported losing 8.6 fewer colonies per 100 managed colonies or an average of 35.7% less than those that reported placing their colonies in close proximity to other crops.

Survey Question

Which of the following crops were the majority of your colonies in proximity to when they were producing honey?

		Total Number of Respondents Providing Valid Responses	Total Number of Colonies Managed	Average Number of Colonies Managed		Average Colony Loss		
				Mean	Standard Error	Mean(%)	Lower 95% CI	Upper 95% CI
Alfalfa	Yes	619	125,102	202.1	56.1	26.5	24.1	28.8
	No	3,097	114,225	36.9	7.8	23.4	22.3	24.5
Blueberries	Yes	464	17,085	36.8	14.2	25.9	23.0	28.8
	No	3,252	222,242	68.3	12.9	23.6	22.6	24.7
Cane Crops	Yes	461	10,541	22.9	12.0	23.7	20.9	26.6
	No	3,255	228,786	70.3	12.9	23.9	22.9	25.0
Canola	Yes	29	20,965	722.9	520.3	21.3	12.6	30.0
	No	3,687	218,362	59.2	10.7	23.9	22.9	24.9
Citrus	Yes	83	31,133	375.1	138.3	27.2	20.7	33.6
	No	3,633	208,194	57.3	11.2	23.8	22.8	24.8
Corn	Yes	972	66,365	68.3	20.6	25.7	23.8	27.6
	No	2,744	172,962	63.0	13.7	23.3	22.1	24.4
Cotton	Yes	77	36,098	468.8	231.4	15.5	10.8	20.2
	No	3,639	203,229	55.8	10.6	24.1	23.1	25.1
Cranberries	Yes	32	15,909	497.2	468.3	31.6	19.9	43.3
	No	3,684	223,418	60.6	10.8	23.8	22.9	24.8
Cucumbers	Yes	454	7,046	15.5	3.4	22.3	19.5	25.1
	No	3,262	232,281	71.2	13.0	24.1	23.1	25.2
Do Not Know	Yes	810	7,832	9.7	2.6	24.0	21.8	26.1
	No	2,906	231,495	79.7	14.6	23.9	22.8	25.0
Other Melons	Yes	291	15,799	54.3	29.7	24.8	21.2	28.5
	No	3,425	223,528	65.3	12.1	23.8	22.8	24.8
Soybeans	Yes	633	38,210	60.4	25.8	24.2	21.9	26.5
	No	3,083	201,117	65.2	12.7	23.8	22.8	24.9
Squash	Yes	551	12,300	22.3	5.5	23.2	20.7	25.8
	No	3,165	227,027	71.7	13.4	24.0	23.0	25.1
Sunflowers	Yes	517	47,236	91.4	49.1	24.3	21.6	26.9
	No	3,199	192,091	60.0	10.6	23.9	22.8	24.9
Sweet Corn	Yes	361	4,821	13.4	2.8	26.4	23.2	29.7
	No	3,355	234,506	69.9	12.7	23.6	22.6	24.7

Watermelons	Yes	226	16,594	73.4	38.7	21.8	18.0	25.6
	No	3,490	222,733	63.8	11.9	24.0	23.0	25.1

Comments About This Data

Relevant Links, References, and Citations

Funded By:



United States
Department of
Agriculture

National Institute
of Food
and Agriculture

This information is for educational purposes only. References to commercial products or trade names do not imply endorsement by the Bee Informed Partnership or its members. The results presented here are the summary of the population who responded. The sample may not be representative of the beekeeping population at large. These results simply highlight differences in the sample population. The results cannot be considered conclusive, causative, protective, or attest to product efficacy or lack of efficacy.



Honey Production by Season

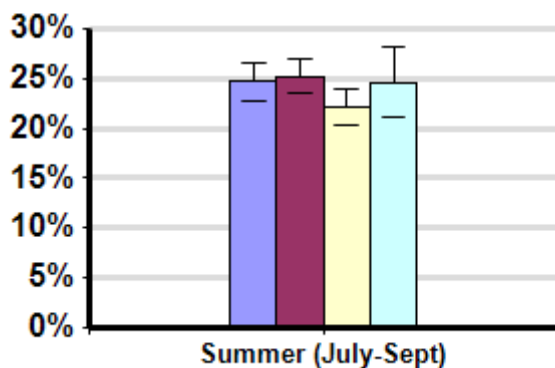
Average winter colony mortality suffered by beekeepers in comparison to amount of honey production between April, 2011 and March, 2012.

Winter

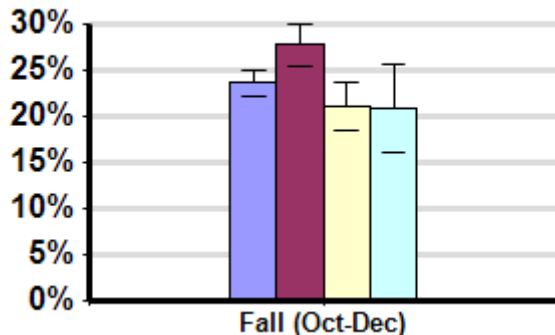
Report ID: 92

Some Significant Differences

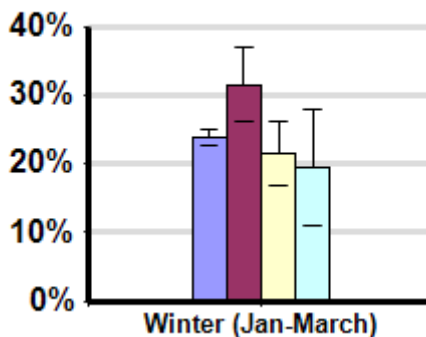
- Did Not Produce Honey In This Season
- Below Average
- Average
- Above Average



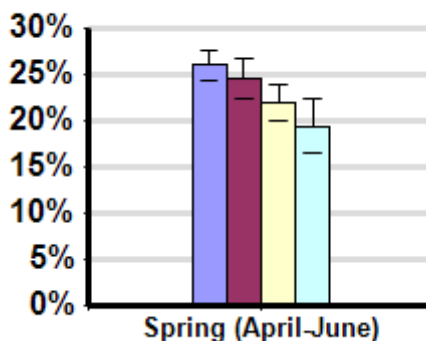
Some Significant Differences



Some Significant Differences



Some Significant Differences



Interpretation

In the winter of 2011, beekeepers who produced lower amounts of honey saw higher losses than those who produced average and above average amounts of honey.

Survey Question

On average, how much honey did the colonies you managed for honey production produce last year (in lbs. per colony)?

- Did not produce honey this season
- Below average
- Average
- Above average

Season	Result	Total Number of Respondents Providing Valid Responses	Total Number of Colonies Managed	Average Number of Colonies Managed		Average Colony Loss		
				Mean	Standard Error	Mean(%)	Lower 95% CI	Upper 95% CI
Fall (Oct-Dec)	Above Average	135	2,444	18.1	4.2	20.9	16.1	25.7
	Average	505	17,866	35.4	12.4	21.0	18.5	23.5
	Below Average	656	63,522	96.8	31.1	27.7	25.5	29.9
	Did Not Produce Honey In This Season	1,863	108,903	58.5	16.2	23.6	22.2	25.0
Spring (April-June)	Above Average	319	6,434	20.2	4.3	19.4	16.5	22.3
	Average	796	39,739	49.9	13.7	21.8	19.9	23.8
	Below Average	660	94,297	142.9	40.1	24.5	22.4	26.7
	Did Not Produce Honey In This Season	1,494	83,219	55.7	19.1	26.0	24.3	27.6
Summer (July-Sept)	Above Average	289	49,249	170.4	69.2	24.6	21.1	28.1
	Average	959	88,815	92.6	32.0	22.1	20.3	23.9
	Below Average	1,068	73,010	68.4	13.0	25.2	23.5	27.0
	Did Not Produce Honey In This Season	1,014	24,396	24.1	15.8	24.7	22.7	26.7
Winter (Jan-March)	Above Average	51	3,193	62.6	30.9	19.4	11.0	27.8
	Average	155	11,275	72.7	42.7	21.4	16.8	26.0
	Below Average	144	9,427	65.5	41.8	31.6	26.1	37.1
	Did Not Produce Honey In This Season	2,528	151,141	59.8	13.8	23.9	22.7	25.1

Comments About This Data

Relevant Links, References, and Citations

Funded By:



United States
Department of
Agriculture

National Institute
of Food
and Agriculture

This information is for educational purposes only. References to commercial products or trade names do not imply endorsement by the Bee Informed Partnership or its members. The results presented here are the summary of the population who responded. The sample may not be representative of the beekeeping population at large. These results simply highlight differences in the sample population. The results cannot be considered conclusive, causative, protective, or attest to product efficacy or lack of efficacy.