



Average Brood Comb Age By Region

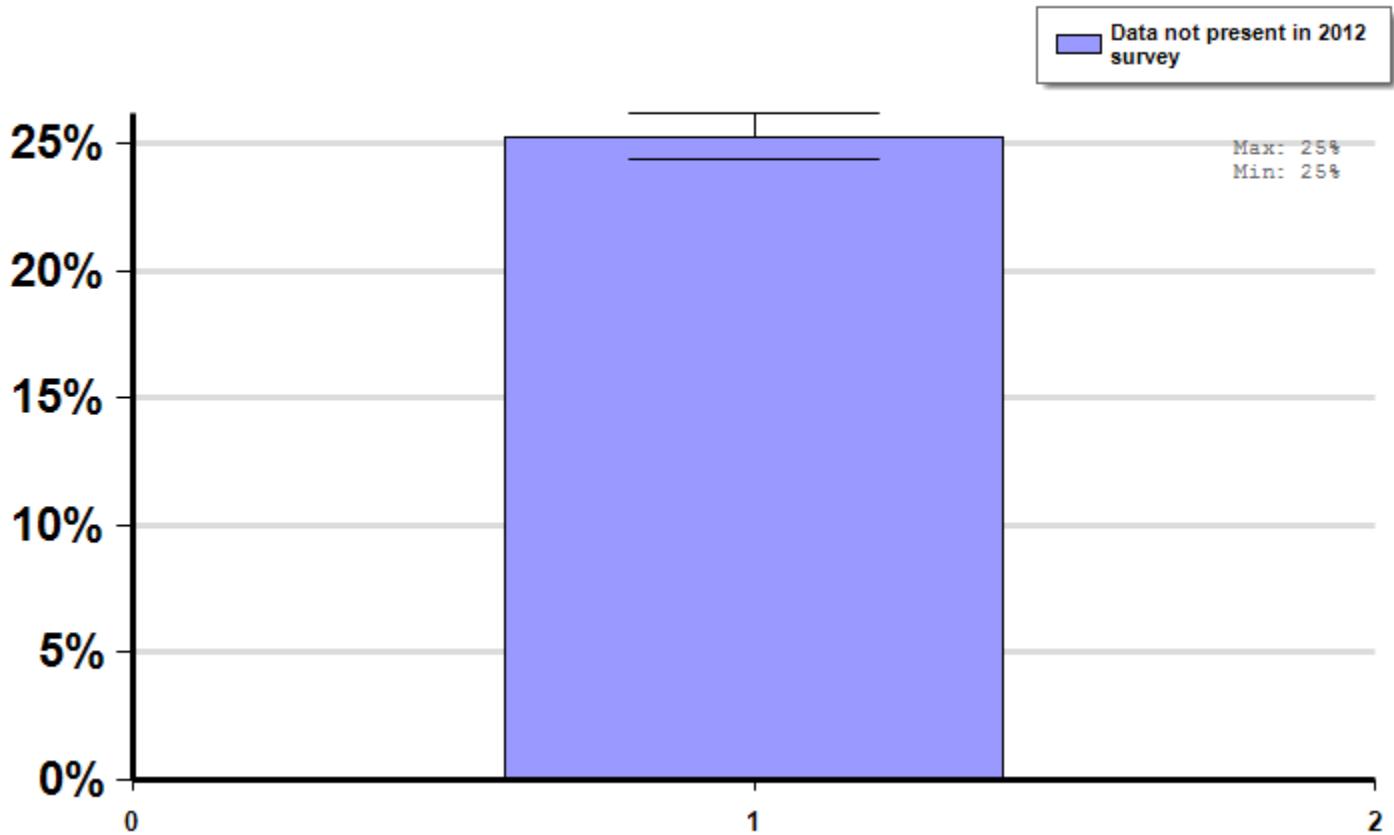
Management Survey 2012

Average winter colony mortality suffered by beekeepers who kept bees in colonies with brood comb of different ages by operations in different regions.

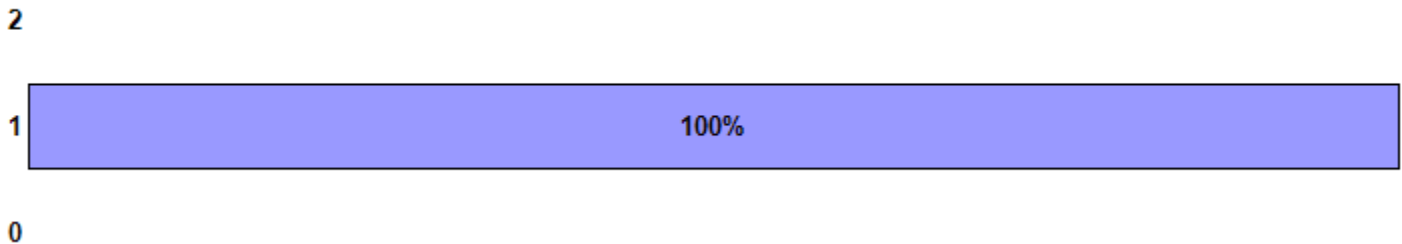
Winter

Report ID: 146-2012

No Significant Differences (within regions)



Respondent Ratio



Interpretation

No comparison.

Survey Question

n/a

		Total Number of Respondents Providing Valid Responses	Total Number of Colonies Managed	Average Number of Colonies Managed		Average Colony Loss		
				Mean	Standard Error	Mean(%)	Lower 95% CI	Upper 95% CI
Data not present in 2012 survey		4,802	296,660	61.8	9.7	25.3	24.4	26.2

Comments About This Data

Relevant Links, References, and Citations

Funded By:



United States
Department of
Agriculture

National Institute
of Food
and Agriculture

This information is for educational purposes only. References to commercial products or trade names do not imply endorsement by the Bee Informed Partnership or its members. The results presented here are the summary of the population who responded. The sample may not be representative of the beekeeping population at large. These results simply highlight differences in the sample population. The results cannot be considered conclusive, causative, protective, or attest to product efficacy or lack of efficacy.