



# Average Loss By Reason Responding Beekeepers Indicated they Kept Bees

Management Survey 2012

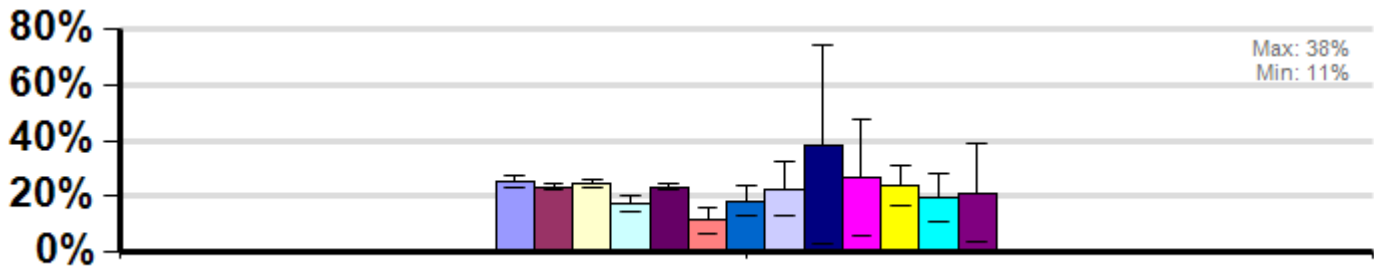
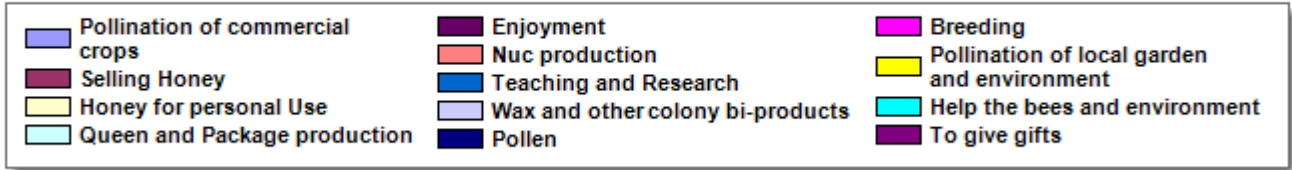
( Filtered by: )

Winter

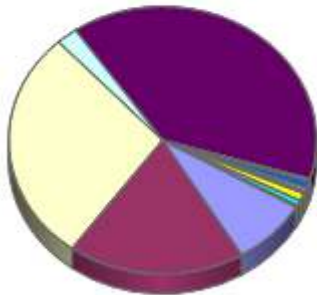
Average loss suffered by beekeepers who indicated the reason or reasons they kept bees between April, 2011 and March, 2012.

Report ID: 14-2012

*Some Significant Differences*



Respondent Ratio



Interpretation

There are some significant differences between a few groups.

Survey Question

Please indicate the reason/reasons for keeping bees.

|   | Total Number of Respondents Providing Valid Responses | Total Number of Colonies Managed | Average Colony Loss |              |              | Percentage of responding beekeepers in each operations size classification who indicated a particular reason they kept bees. Respondents could indicate more than one reason. |           |            |
|---|---|----------------------------------|---------------------|--------------|--------------|---|-----------|------------|
|   |   |                                  | Mean                | Lower 95% CI | Upper 95% CI | Backyard  | Sideliner | Commercial |
| Pollination of commercial crops             | 613   | 185,657                          | 25.3%               | 22.9%        | 27.7%        | 14.2%   | 45.8%     | 80.4%      |
| Selling Honey                               | 1,409   | 214,095                          | 23.4%               | 22.0%        | 24.8%        | 34.5%   | 93.7%     | 94.1%      |
| Honey for personal Use                      | 2,132   | 34,951                           | 24.3%               | 23.0%        | 25.7%        | 58.9%   | 21.1%     | 7.8%       |
| Queen and Package production                | 170   | 82,453                           | 17.3%               | 14.2%        | 20.5%        | 3.2%  | 28.9%     | 27.5%      |
| Enjoyment                                   | 2,974   | 47,976                           | 23.3%               | 22.2%        | 24.4%        | 81.5%   | 46.5%     | 11.8%      |
| Nuc production                              | 26  | 14,876                           | 11.2%               | 6.4%         | 16.0%        | 0.4%  | 4.9%      | 5.9%       |
| Teaching and Research                       | 64  | 1,076                            | 18.3%               | 12.7%        | 23.9%        | 1.7%  | 3.5%      | 0.0%       |
| Wax and other colony bi-products            | 32  | 646                              | 22.5%               | 12.8%        | 32.2%        | 0.8%  | 1.4%      | 0.0%       |
| Pollen                                      | 8   | 59                               | 38.5%               | 2.7%         | 74.3%        | 0.2%  | 0.0%      | 0.0%       |
| Breeding                                    | 11  | 254                              | 27.0%               | 6.1%         | 47.8%        | 0.3%  | 0.7%      | 0.0%       |
| Pollination of local garden and environment | 71  | 223                              | 23.7%               | 16.3%        | 31.0%        | 2.0%  | 0.0%      | 0.0%       |
| Help the bees and environment               | 50  | 441                              | 19.2%               | 10.6%        | 27.8%        | 1.4%  | 0.7%      | 0.0%       |
| To give gifts                               | 17  | 116                              | 21.2%               | 3.4%         | 39.1%        | 0.5%  | 0.0%      | 0.0%       |

## Comments About This Data

## Relevant Links, References, and Citations

Funded By:



United States  
Department of  
Agriculture

National Institute  
of Food  
and Agriculture

This information is for educational purposes only. References to commercial products or trade names do not imply endorsement by the Bee Informed Partnership or its members. The results presented here are the summary of the population who responded. The sample may not be representative of the beekeeping population at large. These results simply highlight differences in the sample population. The results cannot be considered conclusive, causative, protective, or attest to product efficacy or lack of efficacy.