



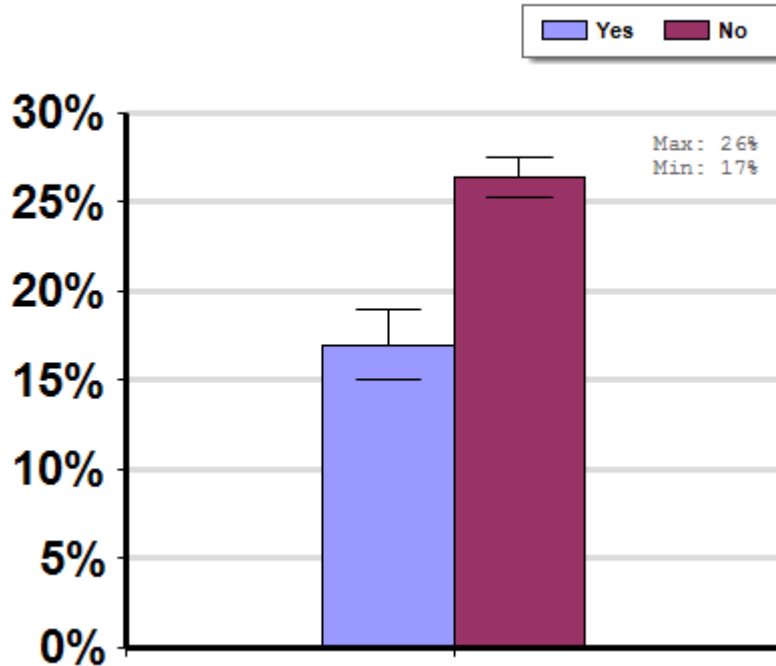
Brood Comb Reuse

Average winter colony mortality reported by beekeepers who did or did not re-use any old brood comb in their colonies between April, 2011 and March, 2012.

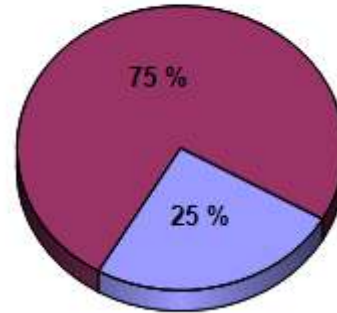
Winter

Report ID: 71-2012

Some Significant Differences



Respondent Ratio



Interpretation

Beekeepers who reported that they did not reuse comb lost on average 4.7 fewer colonies per 100 managed colonies than those who did reuse old comb. In other words, beekeepers who didn't reuse old brood comb lost an average 18.4% fewer colonies than beekeepers who reused old comb.

Survey Question

Between April, 2011 and March, 2012, before you re-used brood comb that you had taken out of production or purchased, did you...

Check all that apply

I did not reuse any old brood comb

Cull any particularly old or bad combs and replace them

Irradiate the comb

Fumigate the comb with acetic acid

Freeze the comb

Store the comb with paradichlorobenzene crystals

Did not treat the comb in any particular way

Other (please specify)

		Total Number of Respondents Providing Valid Responses	Total Number of Colonies Managed	Average Number of Colonies Managed		Average Colony Loss		
				Mean	Standard Error	Mean(%)	Lower 95% CI	Upper 95% CI
Did Not Reuse comb	No	2,778	222,940	80.3	15.0	26.4	25.3	27.5
	Yes	927	4,908	5.3	0.8	17.0	15.0	18.9

Comments About This Data

Relevant Links, References, and Citations

Funded By:



United States
Department of
Agriculture

National Institute
of Food
and Agriculture

This information is for educational purposes only. References to commercial products or trade names do not imply endorsement by the Bee Informed Partnership or its members. The results presented here are the summary of the population who responded. The sample may not be representative of the beekeeping population at large. These results simply highlight differences in the sample population. The results cannot be considered conclusive, causative, protective, or attest to product efficacy or lack of efficacy.