



# Carbohydrate Feed Use

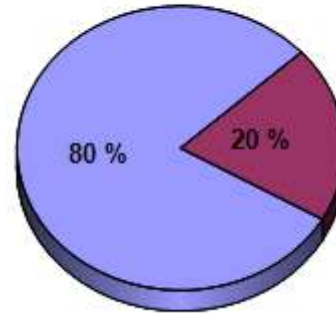
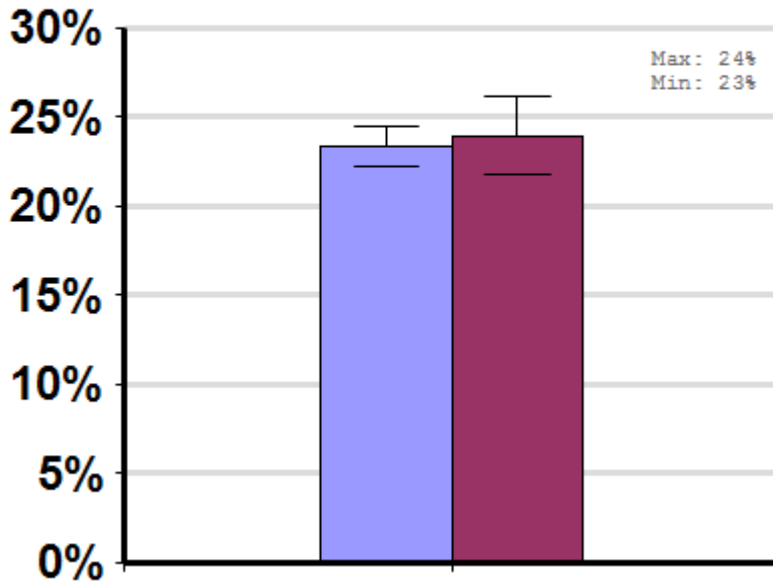
## Winter

Report ID: 164-2012

A comparison of average winter colony mortality among beekeepers who did or did not feed carbohydrates to a majority of their colonies, at least once, between April, 2011 and March, 2012.

No Significant Differences

Respondent Ratio



### Interpretation

No differences between groups.

### Survey Question

Which, if any of the following, did you apply to a majority of your colonies between April 1, 2011 and March, 2012?

- Candy
- Dry sugar
- High Fructose Corn Syrup (HFCS)
- Honey
- Sugar syrup
- Wet supers

		Total Number of Respondents Providing Valid Responses	Total Number of Colonies Managed	Average Number of Colonies Managed		Average Colony Loss		
				Mean	Standard Error	Mean(%)	Lower 95% CI	Upper 95% CI
	Product Not Used	726	25,694	35.4	11.6	23.9	21.7	26.2
	Product Used	2,883	207,564	72.0	14.4	23.3	22.2	24.4

### Comments About This Data

---

## Relevant Links, References, and Citations

Funded By:



United States  
Department of  
Agriculture

National Institute  
of Food  
and Agriculture

This information is for educational purposes only. References to commercial products or trade names do not imply endorsement by the Bee Informed Partnership or its members. The results presented here are the summary of the population who responded. The sample may not be representative of the beekeeping population at large. These results simply highlight differences in the sample population. The results cannot be considered conclusive, causative, protective, or attest to product efficacy or lack of efficacy.