



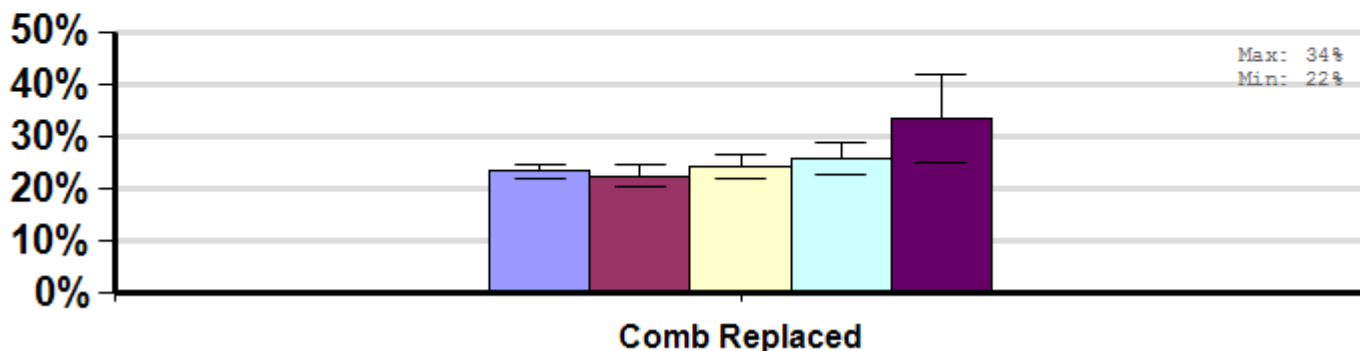
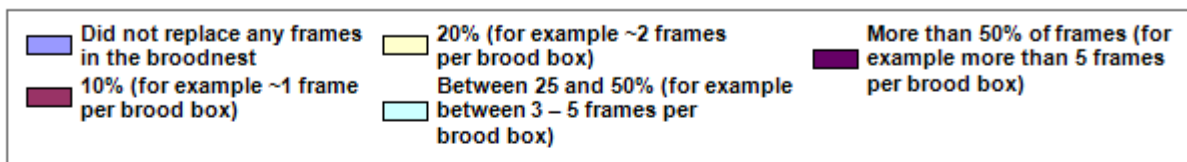
Degree of Brood Comb Replacement

Average winter colony mortality reported by beekeepers who replaced different percentages of their brood nest comb in April, 2011 to March, 2012.

Winter

Report ID: 149-2012

Some Significant Differences



Interpretation

Beekeepers who replaced 50% or more of the comb in their colonies lost 10.3 more colonies per 100 managed colonies, or an average of 30.7% more colonies than those who did not replace any.

Survey Question

On average, how many frames from the brood nest of your colonies did you replace last year? Select one of the following..

- Did not replace any frames in the broodnest
- 10% (for example ~1 frame per brood box)
- 20% (for example ~2 frames per brood box)
- Between 25 and 50% (for example between 3 – 5 frames per brood box)
- More than 50% of frames (for example more than 5 frames per brood box)
- Don't know
- Other (please specify)

		Total Number of Respondents Providing Valid Responses	Total Number of Colonies Managed	Average Number of Colonies Managed		Average Colony Loss		
				Mean	Standard Error	Mean(%)	Lower 95% CI	Upper 95% CI
Comb Replaced	Did not replace any frames in the broodnest	2,035	27,364	13.4	2.9	23.3	22.0	24.7
	10% (for example ~1 frame per brood box)	630	79,253	125.8	35.2	22.5	20.4	24.5
	20% (for example ~2 frames per brood box)	643	78,229	121.7	45.5	24.3	22.1	26.5
	Between 25 and 50% (for example between 3 – 5 frames per brood box)	357	21,848	61.2	23.2	25.7	22.6	28.9
	More than 50% of frames (for example more than 5 frames per brood box)	73	29,148	399.3	249.3	33.6	25.2	42.0

Comments About This Data

Relevant Links, References, and Citations

Funded By:



United States
Department of
Agriculture

National Institute
of Food
and Agriculture

This information is for educational purposes only. References to commercial products or trade names do not imply endorsement by the Bee Informed Partnership or its members. The results presented here are the summary of the population who responded. The sample may not be representative of the beekeeping population at large. These results simply highlight differences in the sample population. The results cannot be considered conclusive, causative, protective, or attest to product efficacy or lack of efficacy.