



Degree of Brood Comb Replacement By Region

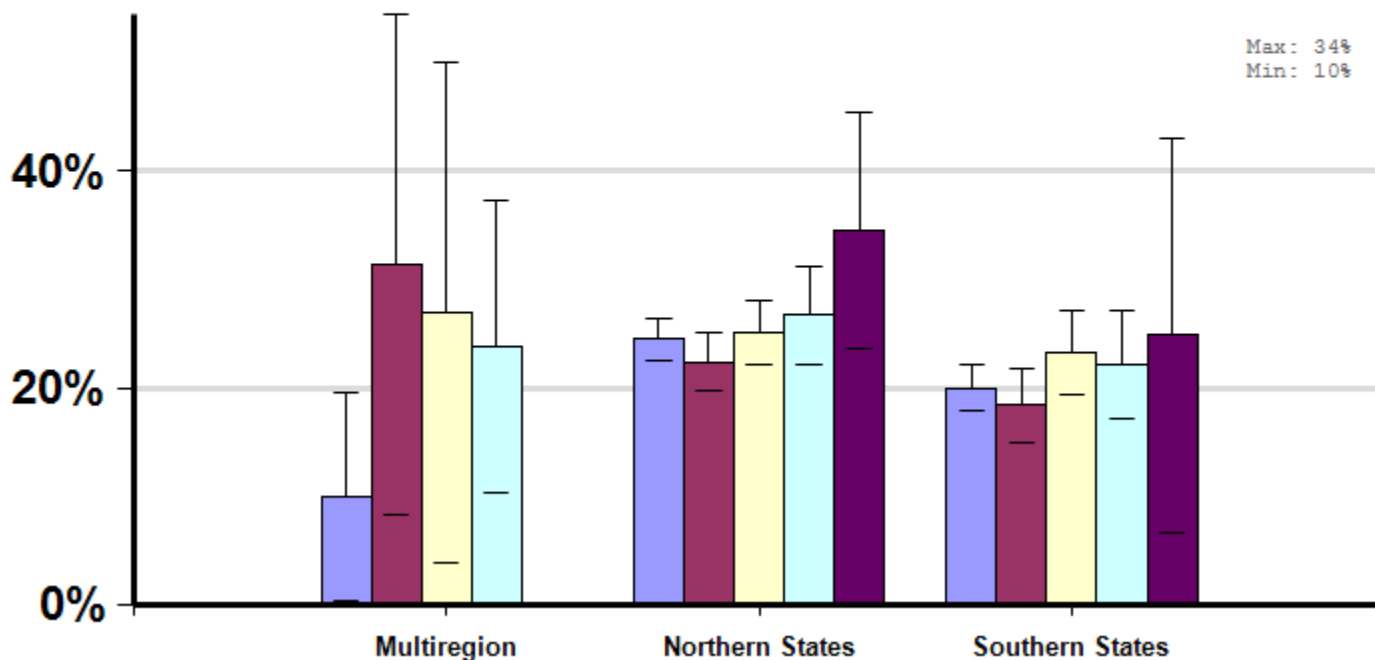
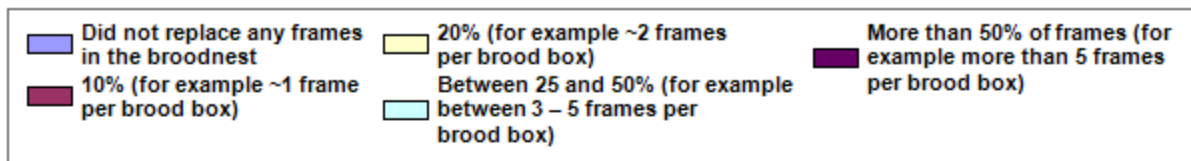
Management Survey 2012

Average winter colony mortality suffered by beekeepers who replaced different percentages of their brood nest comb the previous year by region of operation.

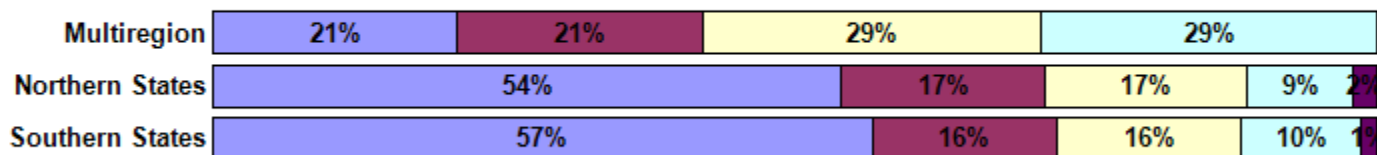
Winter

Report ID: 152-2012

No Significant Differences (within regions)



Respondent Ratio



Interpretation

No differences between regions.

Survey Question

On average, how many frames from the brood nest of your colonies did you replace last year?

- Did not replace any frames in the brood nest
- 10% (for example ~1 frame per box)
- 20% (for example ~2 frames per brood box)
- Between 25 and 50% (for example ~3-5 frames per brood box)
- More than 50% of frames (for example more than 5 frames per brood box)

| | | Total Number of Respondents Providing Valid Responses | Total Number of Colonies Managed | Average Number of Colonies Managed | | Average Colony Loss | | |
|-----------------|------------------------------------------------------------------------|-------------------------------------------------------|----------------------------------|------------------------------------|----------------|---------------------|--------------|--------------|
| | | | | Mean | Standard Error | Mean(%) | Lower 95% CI | Upper 95% CI |
| Multiregion | Did not replace any frames in the broodnest | 8 | 769 | 96.1 | 83.5 | 9.9 | 0.3 | 19.5 |
| | 10% (for example ~1 frame per brood box) | 8 | 6,261 | 782.6 | 533.1 | 31.4 | 8.3 | 54.5 |
| | 20% (for example ~2 frames per brood box) | 11 | 15,360 | 1396.4 | 1360.5 | 27.0 | 3.9 | 50.1 |
| | Between 25 and 50% (for example between 3 – 5 frames per brood box) | 11 | 7,372 | 670.2 | 533.5 | 23.8 | 10.2 | 37.3 |
| Northern States | Did not replace any frames in the broodnest | 1,090 | 10,366 | 9.5 | 2.0 | 24.5 | 22.5 | 26.5 |
| | 10% (for example ~1 frame per brood box) | 352 | 33,553 | 95.3 | 39.6 | 22.4 | 19.7 | 25.1 |
| | 20% (for example ~2 frames per brood box) | 351 | 45,230 | 128.9 | 69.0 | 25.1 | 22.1 | 28.1 |
| | Between 25 and 50% (for example between 3 – 5 frames per brood box) | 183 | 7,360 | 40.2 | 20.7 | 26.7 | 22.2 | 31.2 |
| | More than 50% of frames (for example more than 5 frames per brood box) | 42 | 220 | 5.2 | 0.9 | 34.5 | 23.6 | 45.4 |
| Southern States | Did not replace any frames in the | 674 | 8,475 | 12.6 | 4.2 | 20.0 | 17.9 | 22.1 |

| | | | | | | | | |
|------------------------------------------------------------------------|-----|-------|-------|-------|-------------|------|------|--|
| broodnest | | | | | | | | |
| 10% (for example ~1 frame per brood box) | 188 | 3,455 | 18.4 | 2.8 | 18.4 | 15.0 | 21.8 | |
| 20% (for example ~2 frames per brood box) | 189 | 6,213 | 32.9 | 8.9 | 23.2 | 19.3 | 27.1 | |
| Between 25 and 50% (for example between 3 – 5 frames per brood box) | 122 | 6,697 | 54.9 | 35.5 | 22.1 | 17.1 | 27.2 | |
| More than 50% of frames (for example more than 5 frames per brood box) | 17 | 7,768 | 456.9 | 440.3 | 24.9 | 6.7 | 43.1 | |

Comments About This Data

Relevant Links, References, and Citations

Funded By:



United States
Department of
Agriculture

National Institute
of Food
and Agriculture

This information is for educational purposes only. References to commercial products or trade names do not imply endorsement by the Bee Informed Partnership or its members. The results presented here are the summary of the population who responded. The sample may not be representative of the beekeeping population at large. These results simply highlight differences in the sample population. The results cannot be considered conclusive, causative, protective, or attest to product efficacy or lack of efficacy.