



Honey Production by Season

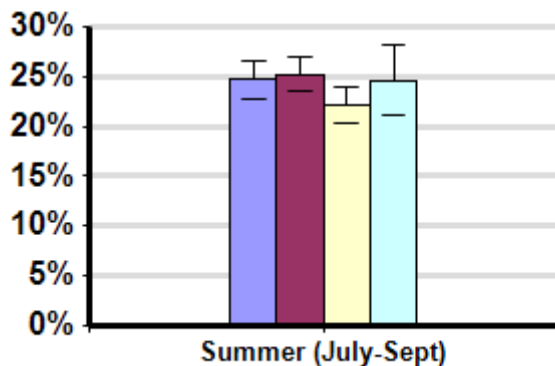
Average winter colony mortality suffered by beekeepers in comparison to amount of honey production between April, 2011 and March, 2012.

Winter

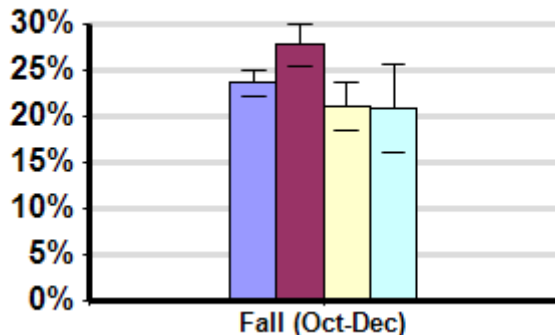
Report ID: 92

Some Significant Differences

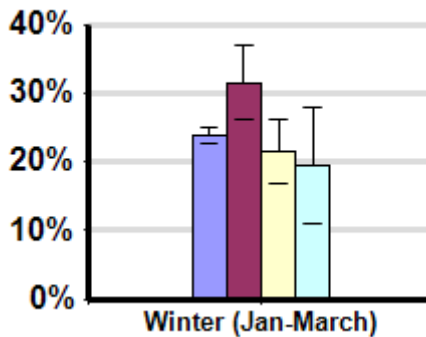
- Did Not Produce Honey In This Season
- Below Average
- Average
- Above Average



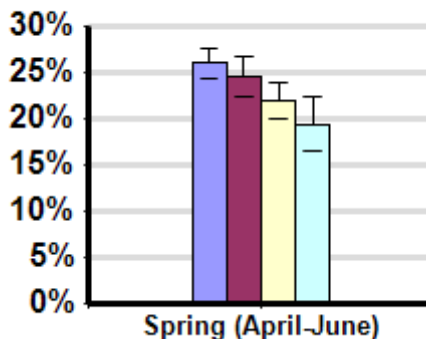
Some Significant Differences



Some Significant Differences



Some Significant Differences



Interpretation

In the winter of 2011, beekeepers who produced lower amounts of honey saw higher losses than those who produced average and above average amounts of honey.

Survey Question

On average, how much honey did the colonies you managed for honey production produce last year (in lbs. per colony)?

- Did not produce honey this season
- Below average
- Average
- Above average

Season	Result	Total Number of Respondents Providing Valid Responses	Total Number of Colonies Managed	Average Number of Colonies Managed		Average Colony Loss		
				Mean	Standard Error	Mean(%)	Lower 95% CI	Upper 95% CI
Fall (Oct-Dec)	Above Average	135	2,444	18.1	4.2	20.9	16.1	25.7
	Average	505	17,866	35.4	12.4	21.0	18.5	23.5
	Below Average	656	63,522	96.8	31.1	27.7	25.5	29.9
	Did Not Produce Honey In This Season	1,863	108,903	58.5	16.2	23.6	22.2	25.0
Spring (April-June)	Above Average	319	6,434	20.2	4.3	19.4	16.5	22.3
	Average	796	39,739	49.9	13.7	21.8	19.9	23.8
	Below Average	660	94,297	142.9	40.1	24.5	22.4	26.7
	Did Not Produce Honey In This Season	1,494	83,219	55.7	19.1	26.0	24.3	27.6
Summer (July-Sept)	Above Average	289	49,249	170.4	69.2	24.6	21.1	28.1
	Average	959	88,815	92.6	32.0	22.1	20.3	23.9
	Below Average	1,068	73,010	68.4	13.0	25.2	23.5	27.0
	Did Not Produce Honey In This Season	1,014	24,396	24.1	15.8	24.7	22.7	26.7
Winter (Jan-March)	Above Average	51	3,193	62.6	30.9	19.4	11.0	27.8
	Average	155	11,275	72.7	42.7	21.4	16.8	26.0
	Below Average	144	9,427	65.5	41.8	31.6	26.1	37.1
	Did Not Produce Honey In This Season	2,528	151,141	59.8	13.8	23.9	22.7	25.1

Comments About This Data

Relevant Links, References, and Citations

Funded By:



United States
Department of
Agriculture

National Institute
of Food
and Agriculture

This information is for educational purposes only. References to commercial products or trade names do not imply endorsement by the Bee Informed Partnership or its members. The results presented here are the summary of the population who responded. The sample may not be representative of the beekeeping population at large. These results simply highlight differences in the sample population. The results cannot be considered conclusive, causative, protective, or attest to product efficacy or lack of efficacy.