



# Losses in Geographic Sub-Regions Excluding Multiregional Operations

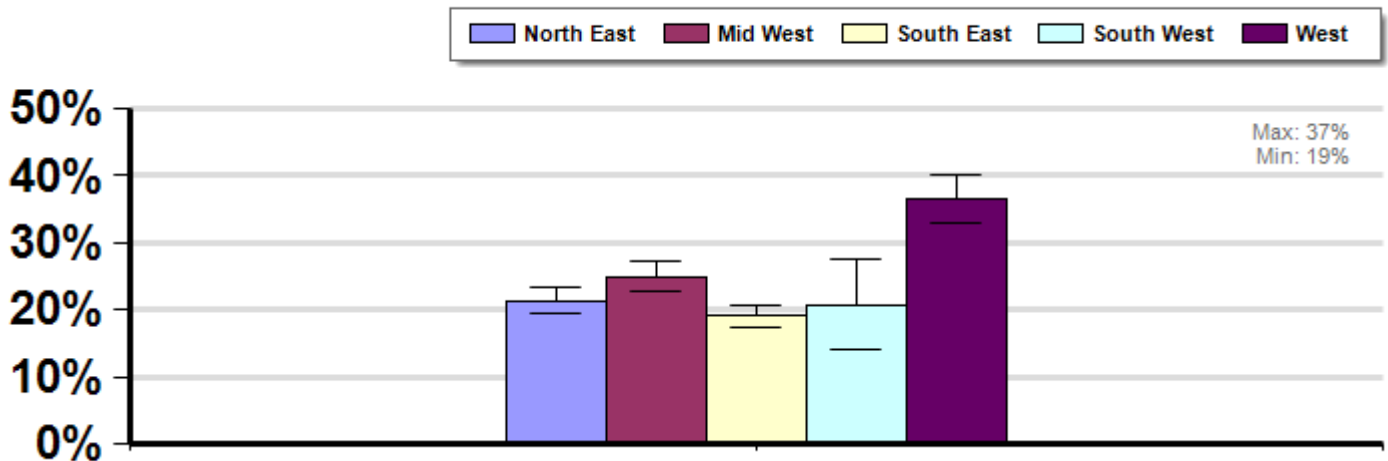
Management Survey 2012

## Winter

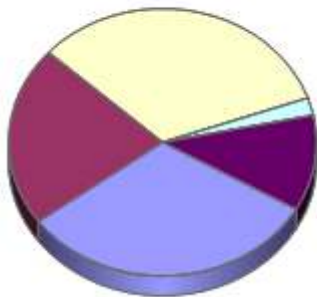
Report ID: 26-2012

Average winter loss suffered by beekeepers who kept their colonies exclusively in different geographic sub-regions of the US including the Northeast (CT, DE, MA, MD, ME, NH, NJ, NY, PA, RI, VT), Midwest (IA, IL, IN, KS, MI, MN, MO, ND, NE, OH, SD, WI), South-East (AL, AR, FL, GA, KY, LA, MS, NC, SC, TN, VA, WV), Southwest (AZ, NM, OK, TX), and West (CA, CO, ID, MT, NV, OR, UT, WA, WY) between April, 2011 and March, 2012. Beekeepers who managed bees in more than one region are excluded. ( Filtered by: )

*Some Significant Differences*



## Respondent Ratio



## Interpretation

Average winter loss suffered by beekeepers who kept their colonies exclusively in different geographic sub-regions of the US including the Northeast (CT, DE, MA, MD, ME, NH, NJ, NY, PA, RI, VT), Midwest (IA, IL, IN, KS, MI, MN, MO, ND, NE, OH, SD, WI), South-East (AL, AR, FL, GA, KY, LA, MS, NC, SC, TN, VA, WV), Southwest (AZ, NM, OK, TX), and West (CA, CO, ID, MT, NV, OR, UT, WA, WY) between April, 2011 and March, 2012. Beekeepers who managed bees in more than one region are excluded.

## Survey Question

Please indicate in which states you kept bees for the months listed.

	Total Number of Respondents Providing Valid Responses	Total Number of Colonies Managed	Average Colony Loss			Percentage of respondents, by operation size, in each region		
			Mean	Lower 95% CI	Upper 95% CI	Backyard	Sideline	Commercial
North East	1,027	11,566	21.4%	19.5%	23.2%	31.9%	29.9%	6.7%

Mid West	709	21,546	24.9%	22.7%	27.1%	21.6%	24.8%	26.7%
South East	1,070	28,098	19.0%	17.5%	20.6%	33.2%	28.2%	20.0%
South West	69	1,265	20.7%	14.0%	27.5%	2.1%	4.3%	0.0%
West	377	47,892	36.5%	33.0%	40.1%	11.2%	12.8%	46.7%

---

## Comments About This Data

---

## Relevant Links, References, and Citations

Funded By:



United States  
Department of  
Agriculture

National Institute  
of Food  
and Agriculture

This information is for educational purposes only. References to commercial products or trade names do not imply endorsement by the Bee Informed Partnership or its members. The results presented here are the summary of the population who responded. The sample may not be representative of the beekeeping population at large. These results simply highlight differences in the sample population. The results cannot be considered conclusive, causative, protective, or attest to product efficacy or lack of efficacy.