



Reported Average Loss By Operation Type (Migratory)

Management Survey 2012

Winter

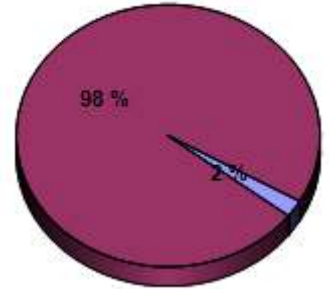
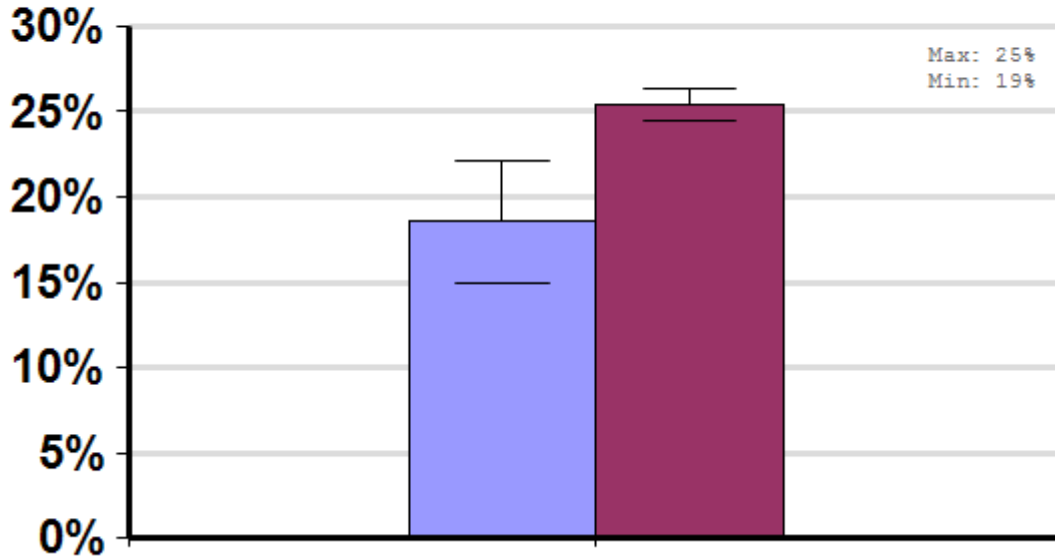
Report ID: 11-2012

Migratory beekeepers were beekeepers who moved a majority of their colonies, at least once, across state lines between April, 2011 and March, 2012.

Some Significant Differences



Respondent Ratio



Interpretation

Migratory beekeepers (2% of total respondents) reported 27.2% less losses than non-migratory beekeepers.

Survey Question

Multiple questions used.

	Total Number of Respondents Providing Valid Responses	Total Number of Colonies Managed	Average Colony Loss		
			Mean	Lower 95% CI	Upper 95% CI
Migratory beekeepers	100	153,051	18.5%	15.0%	22.1%
Non-Migratory beekeepers	4,702	143,609	25.4%	24.5%	26.3%

Comments About This Data

Relevant Links, References, and Citations

Funded By:



United States
Department of
Agriculture

National Institute
of Food
and Agriculture

This information is for educational purposes only. References to commercial products or trade names do not imply endorsement by the Bee Informed Partnership or its members. The results presented here are the summary of the population who responded. The sample may not be representative of the beekeeping population at large. These results simply highlight differences in the sample population. The results cannot be considered conclusive, causative, protective, or attest to product efficacy or lack of efficacy.