



## Summary Winter Loss in Northern and Southern States Excluding Multiregional Operations

Management Survey 2012

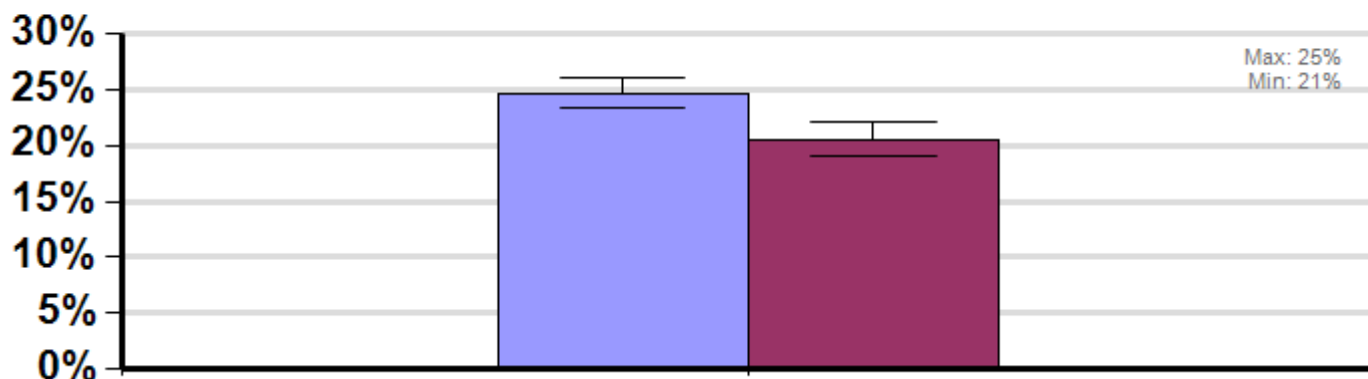
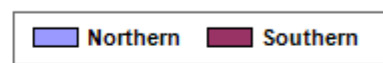
### Winter

Report ID: 29-2012

Average winter loss in beekeeping operations that maintained colonies exclusively in northern states (CO, CT, DE, IA, ID, IL, IN, KS, MA, MD, ME, MI, MN, MS, MT, NB, ND, NH, NJ, NY, OH, OR, PA, RI, SD, VT, WA, WI, WY) and Southern states (AL, AR, AZ, CA, FL, GA, KY, LA, MS, NC, NM, NV, OK, SC, TN, TX, UT, VA, WV) between April, 2011 and March, 2012. Losses in operations that operate in both northern and southern states are not presented.

( Filtered by: )

Some Significant Differences



### Respondent Ratio



### Interpretation

**Beekeepers who kept colonies in exclusively southern regions on average lost 16.7% less colonies than those that kept colonies exclusively in northern states.**

### Survey Question

Please indicate in which states you kept bees for the months listed.

	Total Number of Respondents Providing Valid Responses	Total Number of Colonies Managed	Average Colony Loss			Percentage of respondents, by operation size, in each region		
			Mean	Lower 95% CI	Upper 95% CI	Backyard	Sideline	Commercial
Northern	2,050	97,697	24.6%	23.3%	26.0%	62.7%	66.1%	74.2%
Southern	1,205	35,726	20.5%	19.0%	22.1%	37.3%	33.9%	25.8%

### Comments About This Data

---

## Relevant Links, References, and Citations

Funded By:



United States  
Department of  
Agriculture

National Institute  
of Food  
and Agriculture

This information is for educational purposes only. References to commercial products or trade names do not imply endorsement by the Bee Informed Partnership or its members. The results presented here are the summary of the population who responded. The sample may not be representative of the beekeeping population at large. These results simply highlight differences in the sample population. The results cannot be considered conclusive, causative, protective, or attest to product efficacy or lack of efficacy.