



The Bee Informed Partnership  
Management Survey Results (2012)  
Feeding: Supplements and  
Additives

---

[BeeInformed.org](http://BeeInformed.org)

Funded by:



United States  
Department of  
Agriculture

National Institute  
of Food  
and Agriculture

Release Date: June 2013

This information is for educational purposes only. References to commercial products or trade names do not imply endorsement by the Bee Informed Partnership or its members. The results presented here are the summary of the population who responded. The sample may not be representative of the beekeeping population at large. These results simply highlight differences in the sample population. The results cannot be considered conclusive, causative, protective, or attest to product efficacy or lack of efficacy.



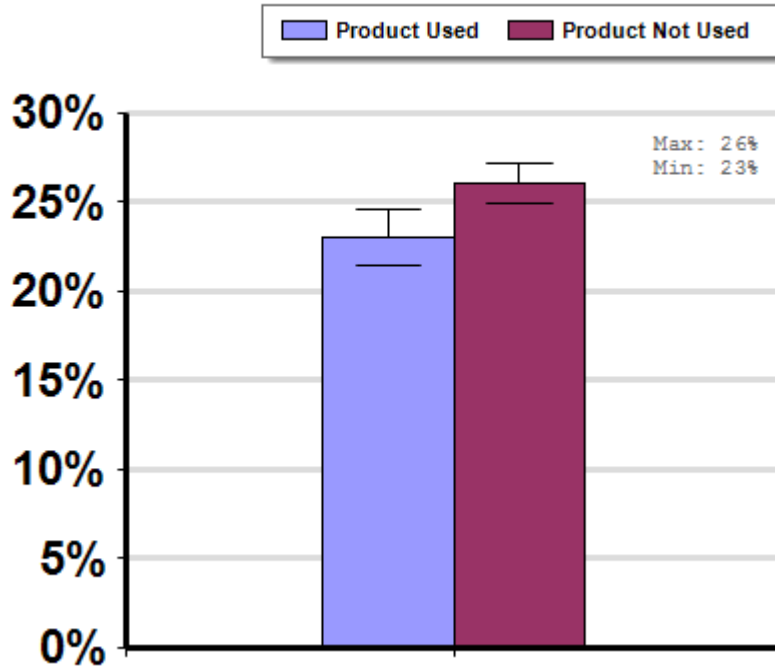
# Honey-B-Healthy Use

## Winter

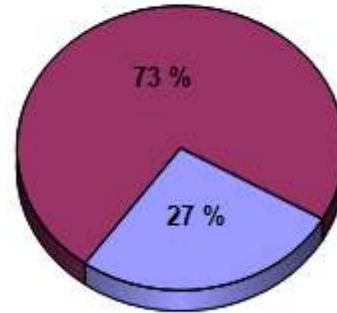
Report ID: 182-2012

A comparison of average winter colony mortality among beekeepers who reported they did or did not apply and/or feed Honey-B-Healthy to a majority of their colonies, at least once, between April, 2011 and March, 2012.

### Some Significant Differences



### Respondent Ratio



### Interpretation

Beekeepers (27% of total respondents) who reported feeding with Honey-B-Healthy reported 3 fewer overwintering colony deaths per 100 managed colonies than those who did not report using a known feeding supplement. In other words, beekeepers who reported feeding colonies with Honey-B-Healthy lost 11.5% fewer colonies than those who did not report treating with any known feeding supplement.

## Survey Question

Which, if any of the following, did you apply to a majority of your colonies between April 1, 2011 and March, 2012?  
-Honey B Healthy

		Total Number of Respondents Providing Valid Responses	Total Number of Colonies Managed	Average Number of Colonies Managed		Average Colony Loss		
				Mean	Standard Error	Mean(%)	Lower 95% CI	Upper 95% CI
	Product Not Used	3,525	188,219	53.4	10.6	26.1	25.0	27.2
	Product Used	1,277	108,441	84.9	21.5	23.1	21.5	24.6

---

## Comments About This Data

---

### Relevant Links, References, and Citations

Funded By:



United States  
Department of  
Agriculture

National Institute  
of Food  
and Agriculture

This information is for educational purposes only. References to commercial products or trade names do not imply endorsement by the Bee Informed Partnership or its members. The results presented here are the summary of the population who responded. The sample may not be representative of the beekeeping population at large. These results simply highlight differences in the sample population. The results cannot be considered conclusive, causative, protective, or attest to product efficacy or lack of efficacy.



# Honey-B-Healthy Use By Region

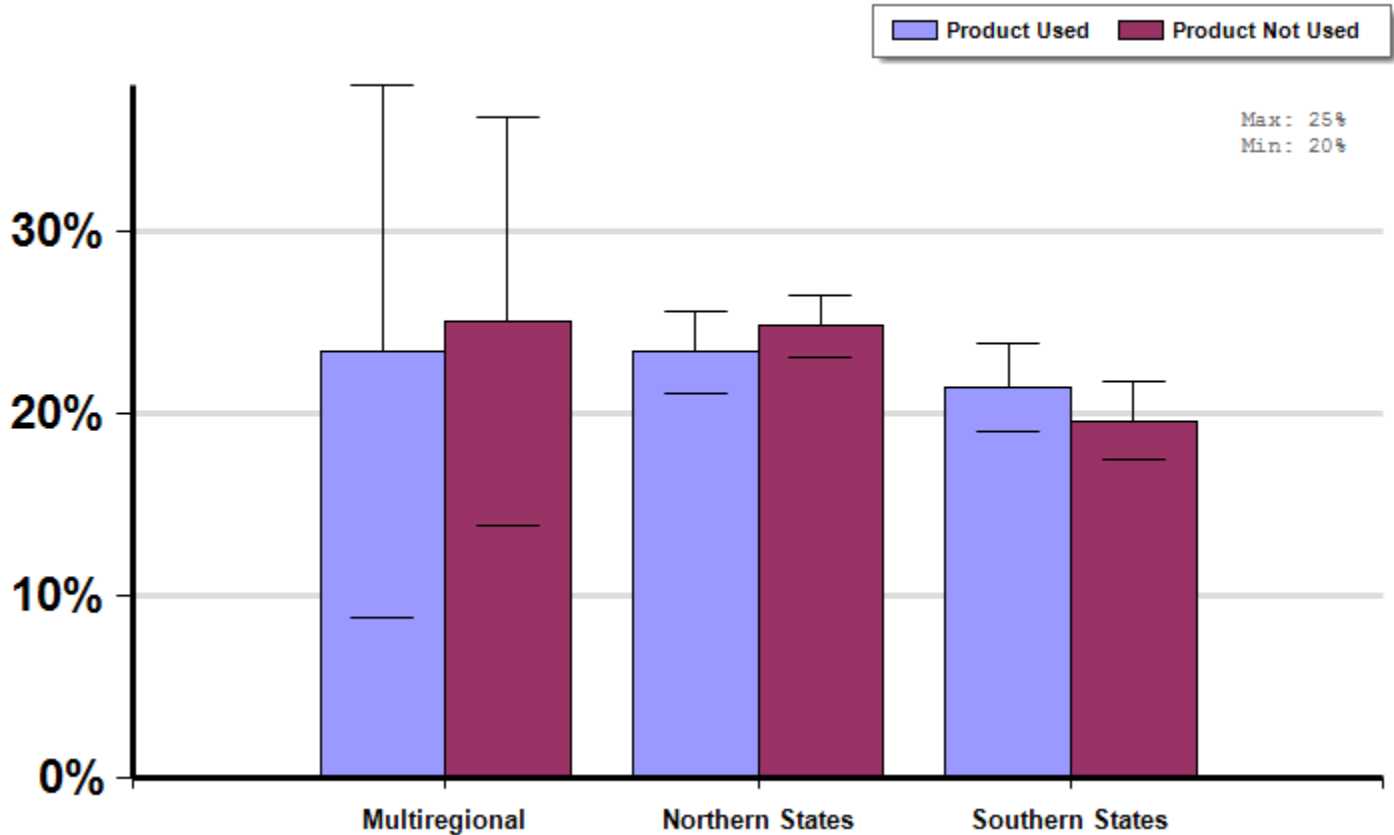
Management Survey 2012

## Winter

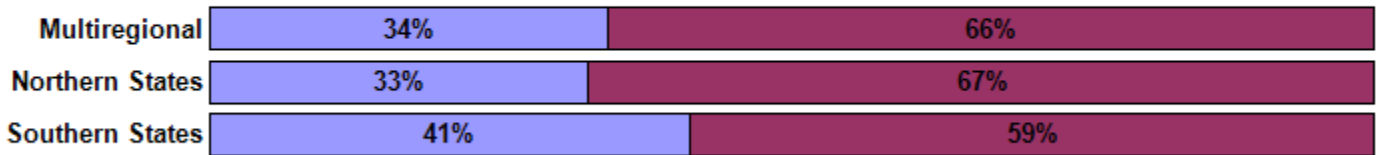
Report ID: 185-2012

A comparison of average winter colony mortality among beekeepers who reported they did or did not apply and/or feed Honey-B-Healthy to a majority of their colonies, at least once, between April, 2011 and March, 2012 by region of operation.

No Significant Differences (within regions)



## Respondent Ratio



## Interpretation

No differences between groups.

## Survey Question

Which, if any of the following, did you apply to a majority of your colonies between April 1, 2011 and March, 2012?  
-Honey B Healthy

		Total Number of Respondents Providing Valid Responses	Total Number of Colonies Managed	Average Number of Colonies Managed		Average Colony Loss		
				Mean	Standard Error	Mean(%)	Lower 95% CI	Upper 95% CI
Multiregional	Product Used	13	24,411	1877.8	1259.9	<b>23.4</b>	8.8	38.0
	Product Not Used	25	16,918	676.7	597.7	<b>25.0</b>	13.8	36.2
Northern States	Product Used	640	31,439	49.1	21.5	<b>23.3</b>	21.1	25.5
	Product Not Used	1,327	65,660	49.5	18.7	<b>24.8</b>	23.0	26.5
Southern States	Product Used	467	18,542	39.7	13.0	<b>21.4</b>	19.0	23.8
	Product Not Used	666	16,302	24.5	11.4	<b>19.6</b>	17.4	21.7

## Comments About This Data

### Relevant Links, References, and Citations

Funded By:



United States  
Department of  
Agriculture

National Institute  
of Food  
and Agriculture

This information is for educational purposes only. References to commercial products or trade names do not imply endorsement by the Bee Informed Partnership or its members. The results presented here are the summary of the population who responded. The sample may not be representative of the beekeeping population at large. These results simply highlight differences in the sample population. The results cannot be considered conclusive, causative, protective, or attest to product efficacy or lack of efficacy.



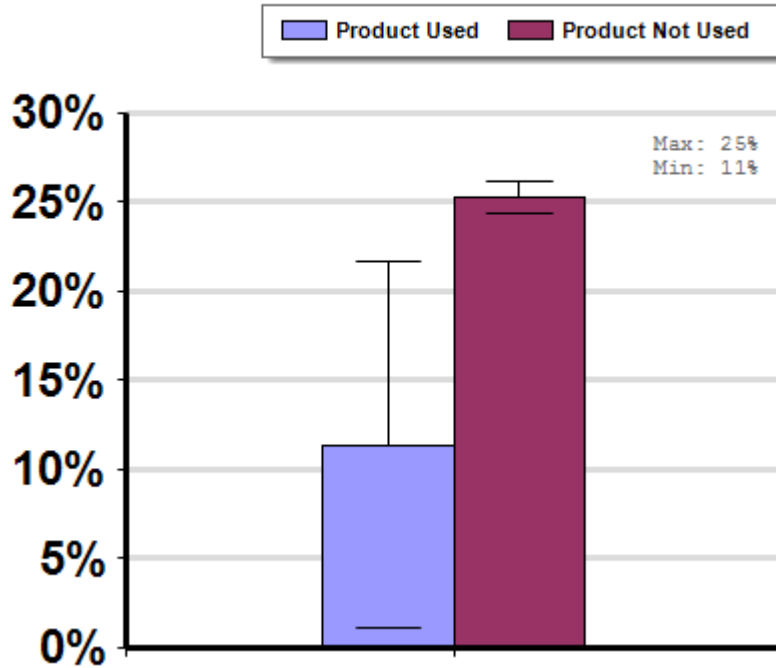
# Vita Feed Green Use

## Winter

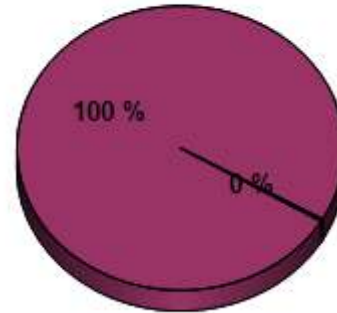
Report ID: 176-2012

A comparison of average winter colony mortality among beekeepers who reported they fed Vita Feed Green and those who reported they did not feed Vita Feed Green, at least once to majority of their colonies, between April, 2011 and March, 2012.

**Some Significant Differences**



**Respondent Ratio**



### Interpretation

The very few (13 total less than 1%) of beekeepers who reported treating with Vita Feed Green reported 13.9 fewer overwintering colony deaths per 100 managed colonies than those who did not report using the product. In other words, beekeepers who reported feeding colonies with Vita Feed Green lost 55% fewer colonies than those who did not report using the product.

## Survey Question

Which, if any of the following, did you apply to a majority of your colonies between April 1, 2011 and March, 2012?

-Vita Feed Green

		Total Number of Respondents Providing Valid Responses	Total Number of Colonies Managed	Average Number of Colonies Managed		Average Colony Loss		
				Mean	Standard Error	Mean(%)	Lower 95% CI	Upper 95% CI
	Product Not Used	4,789	296,513	61.9	9.7	25.3	24.4	26.2
	Product Used	13	147	11.3	4.1	11.4	1.1	21.7

---

## Comments About This Data

---

### Relevant Links, References, and Citations

Funded By:



United States  
Department of  
Agriculture

National Institute  
of Food  
and Agriculture

This information is for educational purposes only. References to commercial products or trade names do not imply endorsement by the Bee Informed Partnership or its members. The results presented here are the summary of the population who responded. The sample may not be representative of the beekeeping population at large. These results simply highlight differences in the sample population. The results cannot be considered conclusive, causative, protective, or attest to product efficacy or lack of efficacy.





# Vita Feed Gold Use

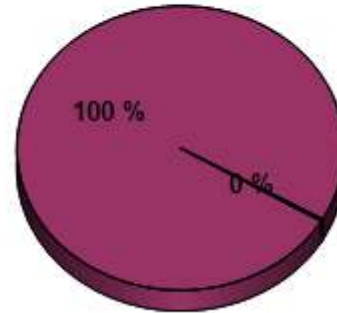
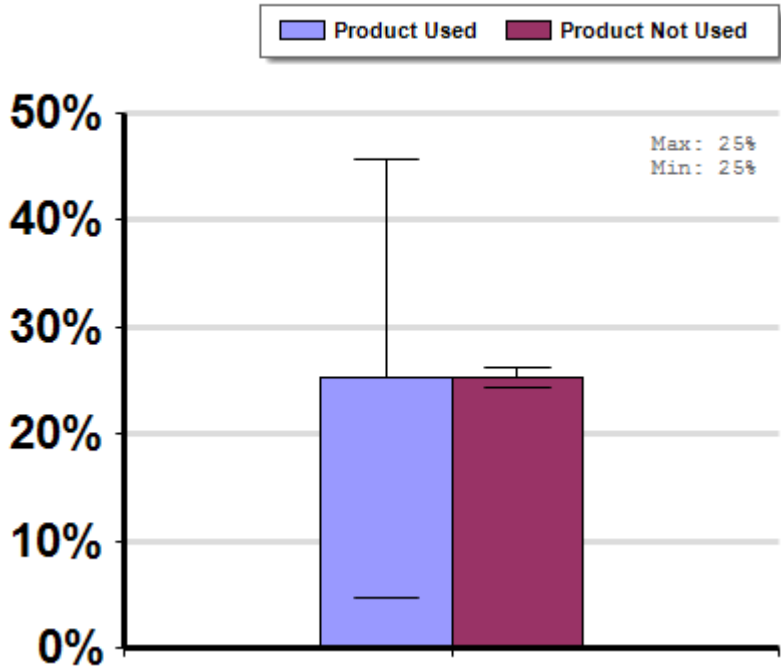
A comparison of average winter colony mortality among beekeepers who reported they fed and those who reported they did not feed Vita Feed Gold, at least once, to a majority of their colonies between April, 2011 and March, 2012.

## Winter

Report ID: 173-2012

No Significant Differences

Respondent Ratio



### Interpretation

No differences detected between groups.

### Survey Question

Which, if any of the following, did you apply to a majority of your colonies between April 1, 2011 and March, 2012?

-Vita Feed Gold

		Total Number of Respondents Providing Valid Responses	Total Number of Colonies Managed	Average Number of Colonies Managed		Average Colony Loss		
				Mean	Standard Error	Mean(%)	Lower 95% CI	Upper 95% CI
	Product Not Used	4,790	296,517	61.9	9.7	25.3	24.4	26.2
	Product Used	12	143	11.9	3.3	25.2	4.6	45.7

### Comments About This Data

### Relevant Links, References, and Citations

Funded By:



United States  
Department of  
Agriculture

National Institute  
of Food  
and Agriculture

This information is for educational purposes only. References to commercial products or trade names do not imply endorsement by the Bee Informed Partnership or its members. The results presented here are the summary of the population who responded. The sample may not be representative of the beekeeping population at large. These results simply highlight differences in the sample population. The results cannot be considered conclusive, causative, protective, or attest to product efficacy or lack of efficacy.



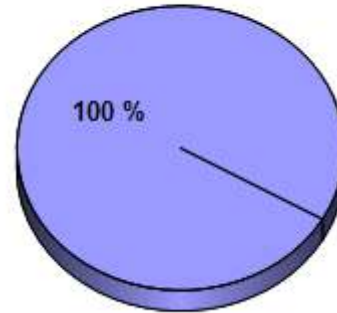
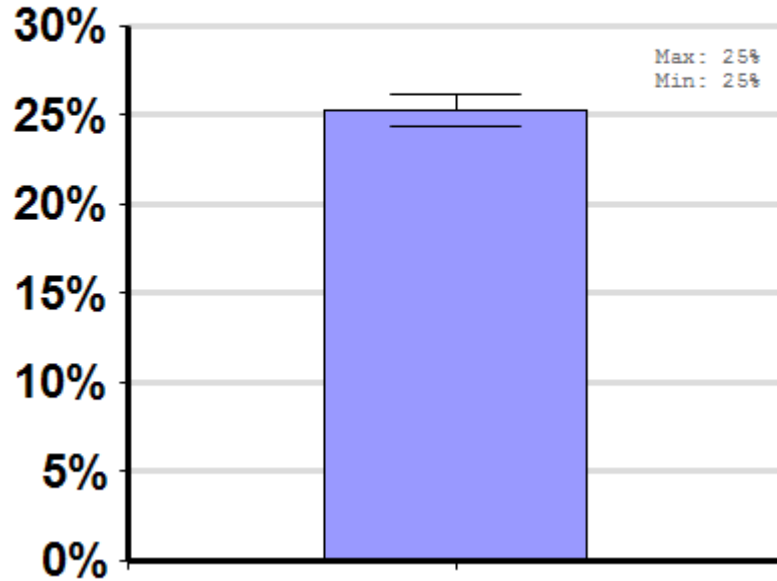
## Winter

Report ID: 179-2012

A comparison of average winter colony mortality among beekeepers who reported they did not feed and those who reported they did feed ApiGo, at least once, to a majority of their colonies between April, 2011 and March, 2012.

No Significant Differences

### Respondent Ratio



### Interpretation

100% of respondents did not use Apigo.

### Survey Question

Did you apply Apigo to a majority of your colonies between April, 2011 and March, 2012?

		Total Number of Respondents Providing Valid Responses	Total Number of Colonies Managed	Average Number of Colonies Managed		Average Colony Loss		
				Mean	Standard Error	Mean(%)	Lower 95% CI	Upper 95% CI
	Product Not Used	4,798	296,623	61.8	9.7	25.3	24.4	26.2

### Comments About This Data

### Relevant Links, References, and Citations

Funded By:



United States Department of Agriculture

National Institute of Food and Agriculture

This information is for educational purposes only. References to commercial products or trade names do not imply endorsement by the Bee Informed Partnership or its members. The results presented here are the summary of the population who responded. The sample may not be representative of the beekeeping population at large. These results simply highlight differences in the sample population. The results cannot be considered conclusive, causative, protective, or attest to product efficacy or lack of efficacy.