



The Bee Informed Partnership
Management Survey Results (2012)
Respondent Profile

BeeInformed.org

Release Date: May 12, 2013

This information is for educational purposes only. References to commercial products or trade names do not imply endorsement by the Bee Informed Partnership or its members. The results presented here are the summary of the population who responded. The sample may not be representative of the beekeeping population at large. These results simply highlight differences in the sample population. The results cannot be considered conclusive, causative, protective, or attest to product efficacy or lack of efficacy.



Summary Winter Loss in Northern and Southern States Excluding Multiregional Operations

Management Survey 2012

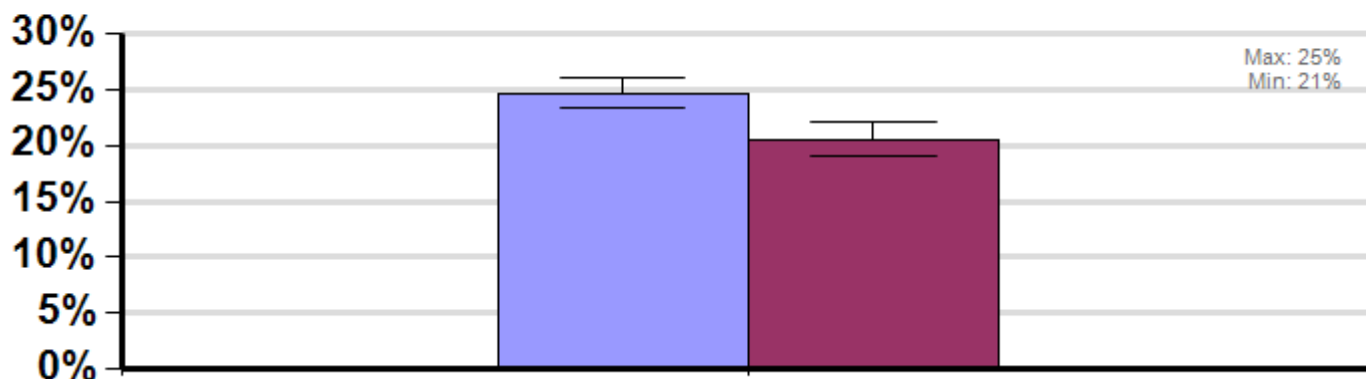
Winter

Report ID: 29-2012

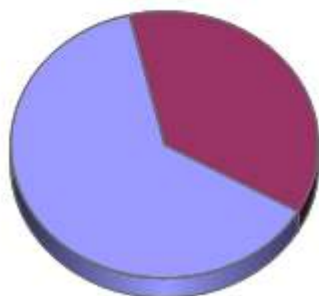
Average winter loss in beekeeping operations that maintained colonies exclusively in northern states (CO, CT, DE, IA, ID, IL, IN, KS, MA, MD, ME, MI, MN, MS, MT, NB, ND, NH, NJ, NY, OH, OR, PA, RI, SD, VT, WA, WI, WY) and Southern states (AL, AR, AZ, CA, FL, GA, KY, LA, MS, NC, NM, NV, OK, SC, TN, TX, UT, VA, WV) between April, 2011 and March, 2012. Losses in operations that operate in both northern and southern states are not presented.

(Filtered by:)

Some Significant Differences



Respondent Ratio



Interpretation

Beekeepers who kept colonies in exclusively southern regions on average lost 16.7% less colonies than those that kept colonies exclusively in northern states.

Survey Question

Please indicate in which states you kept bees for the months listed.

	Total Number of Respondents Providing Valid Responses	Total Number of Colonies Managed	Average Colony Loss			Percentage of respondents, by operation size, in each region		
			Mean	Lower 95% CI	Upper 95% CI	Backyard	Sideline	Commercial
Northern	2,050	97,697	24.6%	23.3%	26.0%	62.7%	66.1%	74.2%
Southern	1,205	35,726	20.5%	19.0%	22.1%	37.3%	33.9%	25.8%

Comments About This Data

Relevant Links, References, and Citations

Funded By:



United States
Department of
Agriculture

National Institute
of Food
and Agriculture

This information is for educational purposes only. References to commercial products or trade names do not imply endorsement by the Bee Informed Partnership or its members. The results presented here are the summary of the population who responded. The sample may not be representative of the beekeeping population at large. These results simply highlight differences in the sample population. The results cannot be considered conclusive, causative, protective, or attest to product efficacy or lack of efficacy.



Losses in Geographic Sub-Regions Excluding Multiregional Operations

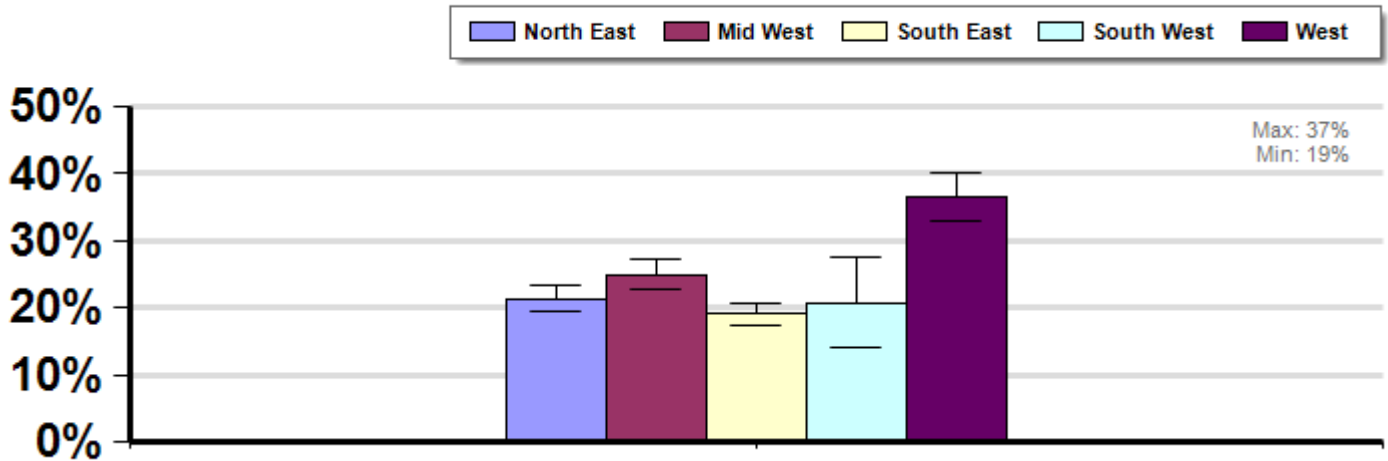
Management
Survey 2012

Winter

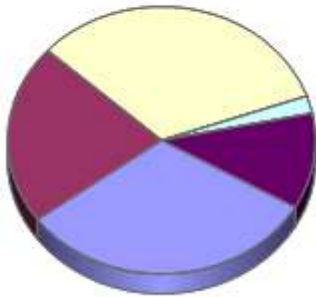
Report ID: 26-
2012

Average winter loss suffered by beekeepers who kept their colonies exclusively in different geographic sub-regions of the US including the Northeast (CT, DE, MA, MD, ME, NH, NJ, NY, PA, RI, VT), Midwest (IA, IL, IN, KS, MI, MN, MO, ND, NE, OH, SD, WI), South-East (AL, AR, FL, GA, KY, LA, MS, NC, SC, TN, VA, WV), Southwest (AZ, NM, OK, TX), and West (CA, CO, ID, MT, NV, OR, UT, WA, WY) between April, 2011 and March, 2012. Beekeepers who managed bees in more than one region are excluded. (Filtered by:)

Some Significant Differences



Respondent Ratio



Interpretation

Average winter loss suffered by beekeepers who kept their colonies exclusively in different geographic sub-regions of the US including the Northeast (CT, DE, MA, MD, ME, NH, NJ, NY, PA, RI, VT), Midwest (IA, IL, IN, KS, MI, MN, MO, ND, NE, OH, SD, WI), South-East (AL, AR, FL, GA, KY, LA, MS, NC, SC, TN, VA, WV), Southwest (AZ, NM, OK, TX), and West (CA, CO, ID, MT, NV, OR, UT, WA, WY) between April, 2011 and March, 2012. Beekeepers who managed bees in more than one region are excluded.

Survey Question

Please indicate in which states you kept bees for the months listed.

	Total Number of Respondents Providing Valid Responses	Total Number of Colonies Managed	Average Colony Loss			Percentage of respondents, by operation size, in each region		
			Mean	Lower 95% CI	Upper 95% CI	Backyard	Sideline	Commercial
North East	1,027	11,566	21.4%	19.5%	23.2%	31.9%	29.9%	6.7%

Mid West	709	21,546	24.9%	22.7%	27.1%	21.6%	24.8%	26.7%
South East	1,070	28,098	19.0%	17.5%	20.6%	33.2%	28.2%	20.0%
South West	69	1,265	20.7%	14.0%	27.5%	2.1%	4.3%	0.0%
West	377	47,892	36.5%	33.0%	40.1%	11.2%	12.8%	46.7%

Comments About This Data

Relevant Links, References, and Citations

Funded By:



United States
Department of
Agriculture

National Institute
of Food
and Agriculture

This information is for educational purposes only. References to commercial products or trade names do not imply endorsement by the Bee Informed Partnership or its members. The results presented here are the summary of the population who responded. The sample may not be representative of the beekeeping population at large. These results simply highlight differences in the sample population. The results cannot be considered conclusive, causative, protective, or attest to product efficacy or lack of efficacy.



Loss By Operation Size

Management Survey 2012

Winter

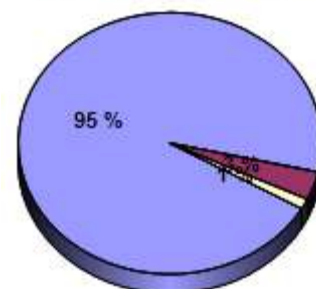
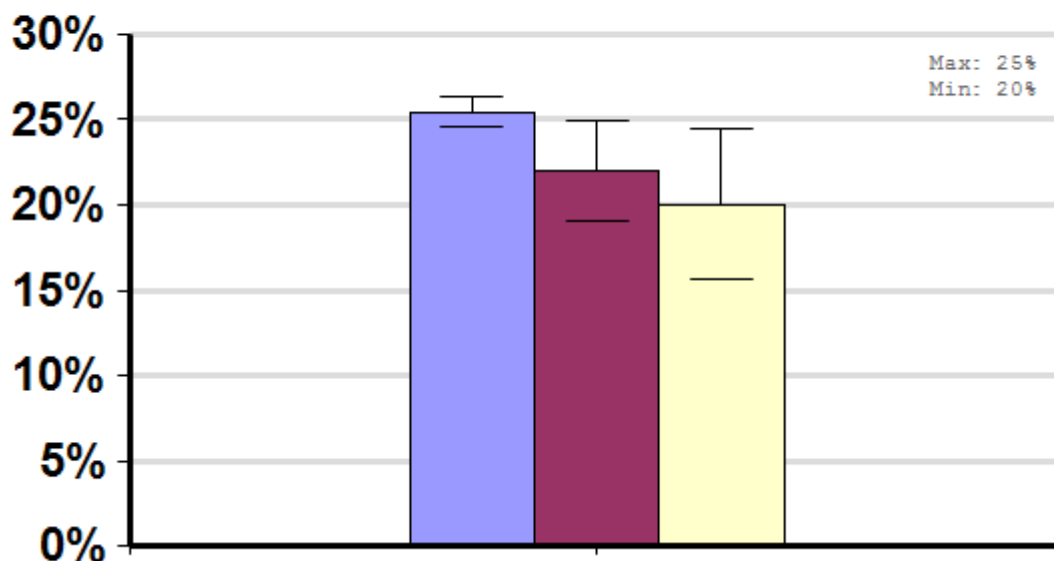
Report ID: 8-2012

Backyard beekeepers managed fewer than 50 colonies between April, 2011 and March, 2012. Sideline beekeepers managed between 51 and 500 colonies between April, 2011 and March, 2012. Commercial beekeepers managed more than 500 colonies between April, 2011 and March, 2012.

Some Significant Differences



Respondent Ratio



Interpretation

95% of respondents each of last 2 years have been backyard beekeepers. Backyard beekeepers lost more bees on average than sideline and commercial beekeepers for both survey years; only 2012 showed significant difference.

Survey Question

Several questions used

	Total Number of Respondents Providing Valid Responses	Total Number of Colonies Managed	Average Colony Loss			Total Colony Loss		
			Mean	Lower 95% CI	Upper 95% CI	Total	Lower CI	Upper CI
Backyard	4,572	29,511	25.5%	24.5%	26.4%	25.0%	24.3%	25.8%
Sideline	168	24,679	22.0%	19.0%	25.0%	21.6%	19.1%	24.5%
Commercial	62	242,470	20.1%	15.7%	24.4%	17.9%	14.7%	21.7%

Comments About This Data

Relevant Links, References, and Citations

Funded By:



United States
Department of
Agriculture

National Institute
of Food
and Agriculture

This information is for educational purposes only. References to commercial products or trade names do not imply endorsement by the Bee Informed Partnership or its members. The results presented here are the summary of the population who responded. The sample may not be representative of the beekeeping population at large. These results simply highlight differences in the sample population. The results cannot be considered conclusive, causative, protective, or attest to product efficacy or lack of efficacy.



Reported Average Loss By Operation Type (Migratory)

Winter

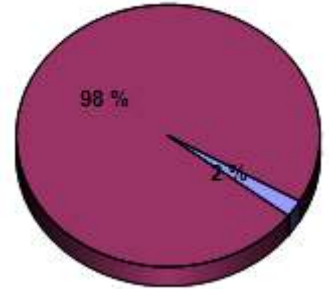
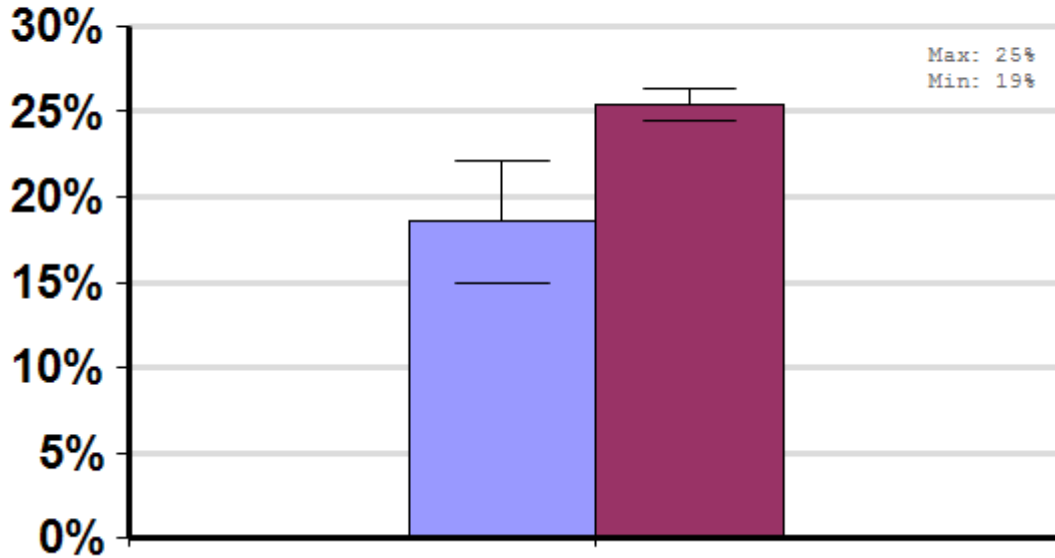
Report ID: 11-2012

Migratory beekeepers were beekeepers who moved a majority of their colonies, at least once, across state lines between April, 2011 and March, 2012.

Some Significant Differences



Respondent Ratio



Interpretation

Migratory beekeepers (2% of total respondents) reported 27.2% less losses than non-migratory beekeepers.

Survey Question

Multiple questions used.

	Total Number of Respondents Providing Valid Responses	Total Number of Colonies Managed	Average Colony Loss		
			Mean	Lower 95% CI	Upper 95% CI
Migratory beekeepers	100	153,051	18.5%	15.0%	22.1%
Non-Migratory beekeepers	4,702	143,609	25.4%	24.5%	26.3%

Comments About This Data

Relevant Links, References, and Citations

Funded By:



United States
Department of
Agriculture

National Institute
of Food
and Agriculture

This information is for educational purposes only. References to commercial products or trade names do not imply endorsement by the Bee Informed Partnership or its members. The results presented here are the summary of the population who responded. The sample may not be representative of the beekeeping population at large. These results simply highlight differences in the sample population. The results cannot be considered conclusive, causative, protective, or attest to product efficacy or lack of efficacy.



Average Loss in operations with different Beekeeping Management Philosophies

Management Survey 2012

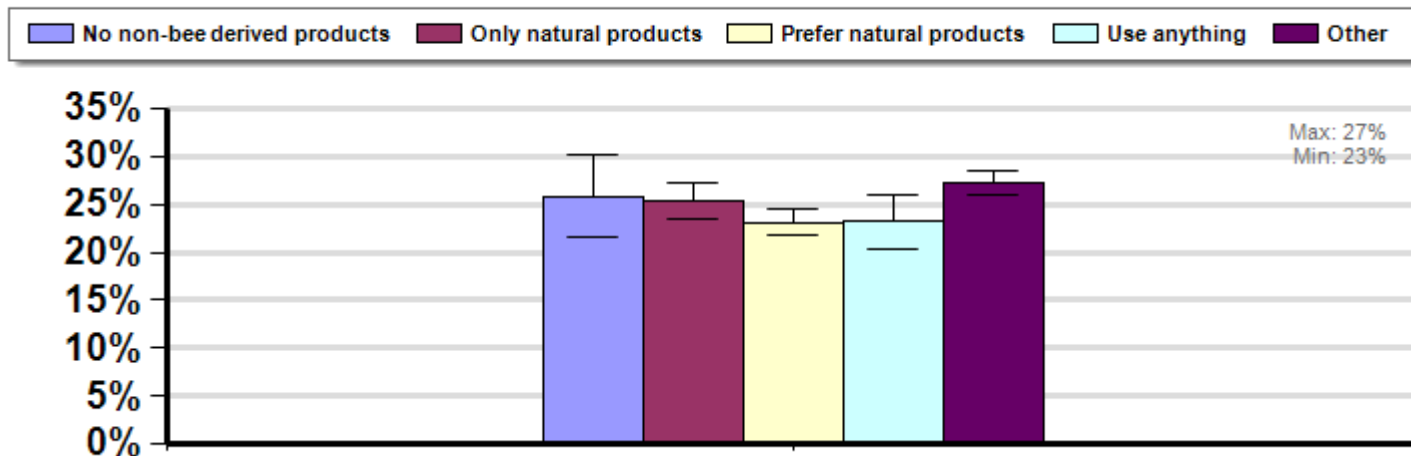
(Filtered by:)

Winter

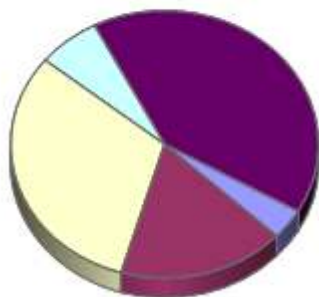
Average winter loss suffered by beekeepers who had different beekeeping management philosophies between April, 2011 and March, 2012.

Report ID: 20-2012

Some Significant Differences



Respondent Ratio



Interpretation

No significant differences between groups.

Survey Question

When choosing treatment or feeding strategies for your colonies, would you say that you use:

- No non-bee derived products
- Only natural products
- Prefer natural products
- Use anything
- Other

	Total Number of Respondents Providing Valid Responses	Total Number of Colonies Managed	Average Colony Loss			Percentage of respondents in different operation size classifications who indicated a particular management philosophy		
			Mean	Lower 95% CI	Upper 95% CI	Backyard	Sideliner	Commercial
No non-bee derived products	225	2,383	25.8%	21.5%	30.1%	4.7%	4.8%	0.0%
Only natural products	1,069	12,262	25.3%	23.4%	27.2%	22.8%	14.9%	1.6%
Prefer natural products	1,907	76,245	23.2%	21.8%	24.5%	39.8%	41.1%	27.4%
Use anything	403	125,605	23.2%	20.4%	26.1%	7.6%	15.5%	45.2%
Other	2,492	94,810	27.2%	25.9%	28.5%	52.5%	43.5%	27.4%

Comments About This Data

Relevant Links, References, and Citations

Funded By:



United States
Department of
Agriculture

National Institute
of Food
and Agriculture

This information is for educational purposes only. References to commercial products or trade names do not imply endorsement by the Bee Informed Partnership or its members. The results presented here are the summary of the population who responded. The sample may not be representative of the beekeeping population at large. These results simply highlight differences in the sample population. The results cannot be considered conclusive, causative, protective, or attest to product efficacy or lack of efficacy.



Average Loss By Percent Income Derived From Beekeeping

Management Survey 2012

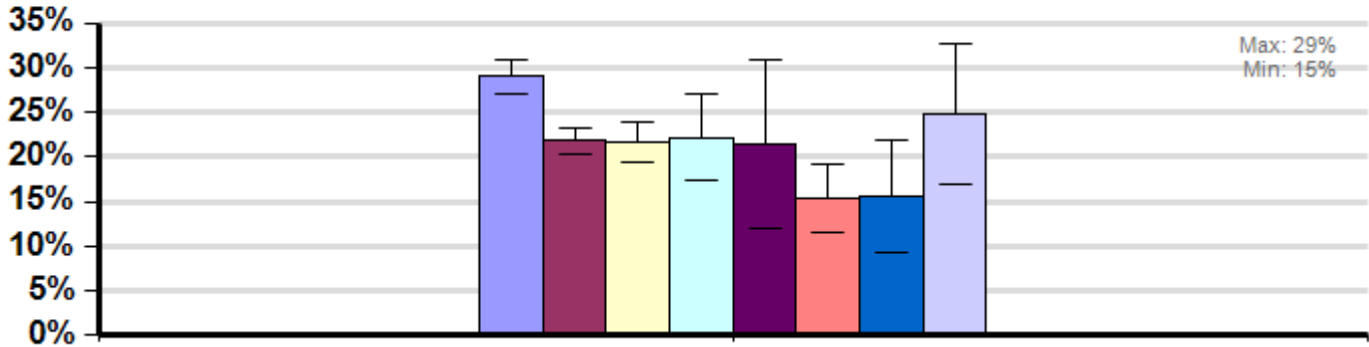
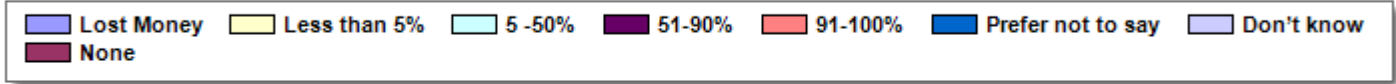
(Filtered by:)

Winter

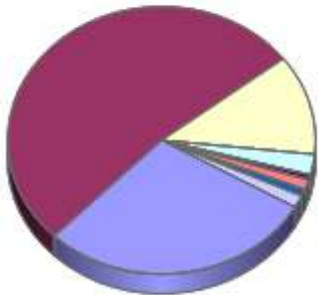
Average loss suffered by proportion of total income derived from beekeeping activity differed from April, 2011 to March, 2012.

Report ID: 17-2012

Some Significant Differences



Respondent Ratio



Interpretation

Beekeepers who reported losing money keeping bees lost more colonies than beekeepers who derived no income from keeping bees, made less than 51% of their income from keeping bees, and those that derived more than 90% of their income from keeping bees.

Survey Question

What percentage of your annual income was derived from your beekeeping activities last year?

- Lost money
- Less than 5%
- 5-50%
- 51-90%
- 91-100%
- Prefer not to say
- Don't know
- None

	Total Number of Respondents Providing Valid Responses	Total Number of Colonies Managed	Average Colony Loss			Percentage of respondents in each operation size classification who indicated a particular proportion of their income was derived by beekeeping activities		
			Mean	Lower 95% CI	Upper 95% CI	Backyard	Sideline	Commercial
Lost Money	1,099	22,021	29.1%	27.2%	31.0%	29.3%	27.7%	7.8%
None	1,982	12,331	21.8%	20.4%	23.1%	54.7%	6.4%	2.0%
Less than 5%	461	7,740	21.6%	19.4%	23.8%	12.1%	17.0%	0.0%
5 -50%	95	8,459	22.1%	17.3%	27.0%	1.6%	25.5%	5.9%
51-90%	23	18,274	21.4%	12.0%	30.8%	0.1%	8.5%	15.7%
91-100%	47	168,205	15.4%	11.6%	19.2%	0.1%	7.1%	68.6%
Prefer not to say	31	1,814	15.6%	9.3%	21.9%	0.6%	7.1%	0.0%
Don't know	57	634	24.7%	16.9%	32.6%	1.6%	0.7%	0.0%

Comments About This Data

Relevant Links, References, and Citations

Funded By:



United States
Department of
Agriculture

National Institute
of Food
and Agriculture

This information is for educational purposes only. References to commercial products or trade names do not imply endorsement by the Bee Informed Partnership or its members. The results presented here are the summary of the population who responded. The sample may not be representative of the beekeeping population at large. These results simply highlight differences in the sample population. The results cannot be considered conclusive, causative, protective, or attest to product efficacy or lack of efficacy.



Average Loss By Reason Responding Beekeepers Indicated they Kept Bees

Management Survey 2012

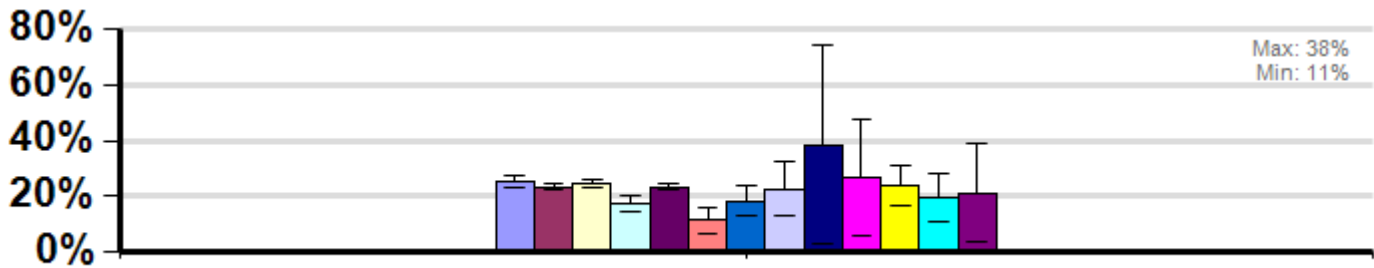
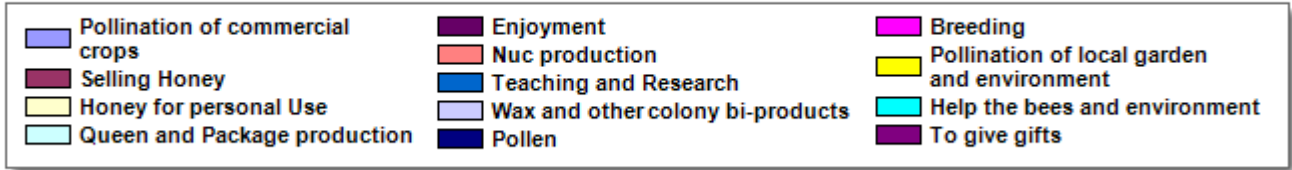
(Filtered by:)

Winter

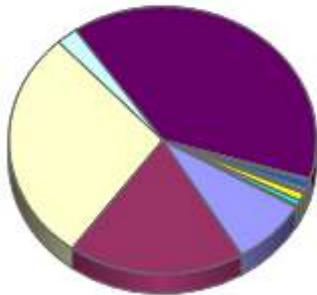
Average loss suffered by beekeepers who indicated the reason or reasons they kept bees between April, 2011 and March, 2012.

Report ID: 14-2012

Some Significant Differences



Respondent Ratio



Interpretation

There are some significant differences between a few groups.

Survey Question

Please indicate the reason/reasons for keeping bees.

	Total Number of Respondents Providing Valid Responses	Total Number of Colonies Managed	Average Colony Loss			Percentage of responding beekeepers in each operations size classification who indicated a particular reason they kept bees. Respondents could indicate more than one reason.		
			Mean	Lower 95% CI	Upper 95% CI	Backyard	Sideliner	Commercial
Pollination of commercial crops	613	185,657	25.3%	22.9%	27.7%	14.2%	45.8%	80.4%
Selling Honey	1,409	214,095	23.4%	22.0%	24.8%	34.5%	93.7%	94.1%
Honey for personal Use	2,132	34,951	24.3%	23.0%	25.7%	58.9%	21.1%	7.8%
Queen and Package production	170	82,453	17.3%	14.2%	20.5%	3.2%	28.9%	27.5%
Enjoyment	2,974	47,976	23.3%	22.2%	24.4%	81.5%	46.5%	11.8%
Nuc production	26	14,876	11.2%	6.4%	16.0%	0.4%	4.9%	5.9%
Teaching and Research	64	1,076	18.3%	12.7%	23.9%	1.7%	3.5%	0.0%
Wax and other colony bi-products	32	646	22.5%	12.8%	32.2%	0.8%	1.4%	0.0%
Pollen	8	59	38.5%	2.7%	74.3%	0.2%	0.0%	0.0%
Breeding	11	254	27.0%	6.1%	47.8%	0.3%	0.7%	0.0%
Pollination of local garden and environment	71	223	23.7%	16.3%	31.0%	2.0%	0.0%	0.0%
Help the bees and environment	50	441	19.2%	10.6%	27.8%	1.4%	0.7%	0.0%
To give gifts	17	116	21.2%	3.4%	39.1%	0.5%	0.0%	0.0%

Comments About This Data

Relevant Links, References, and Citations

Funded By:



United States
Department of
Agriculture

National Institute
of Food
and Agriculture

This information is for educational purposes only. References to commercial products or trade names do not imply endorsement by the Bee Informed Partnership or its members. The results presented here are the summary of the population who responded. The sample may not be representative of the beekeeping population at large. These results simply highlight differences in the sample population. The results cannot be considered conclusive, causative, protective, or attest to product efficacy or lack of efficacy.