



# Crops Close to Colonies During Honey Flow (Southeast)

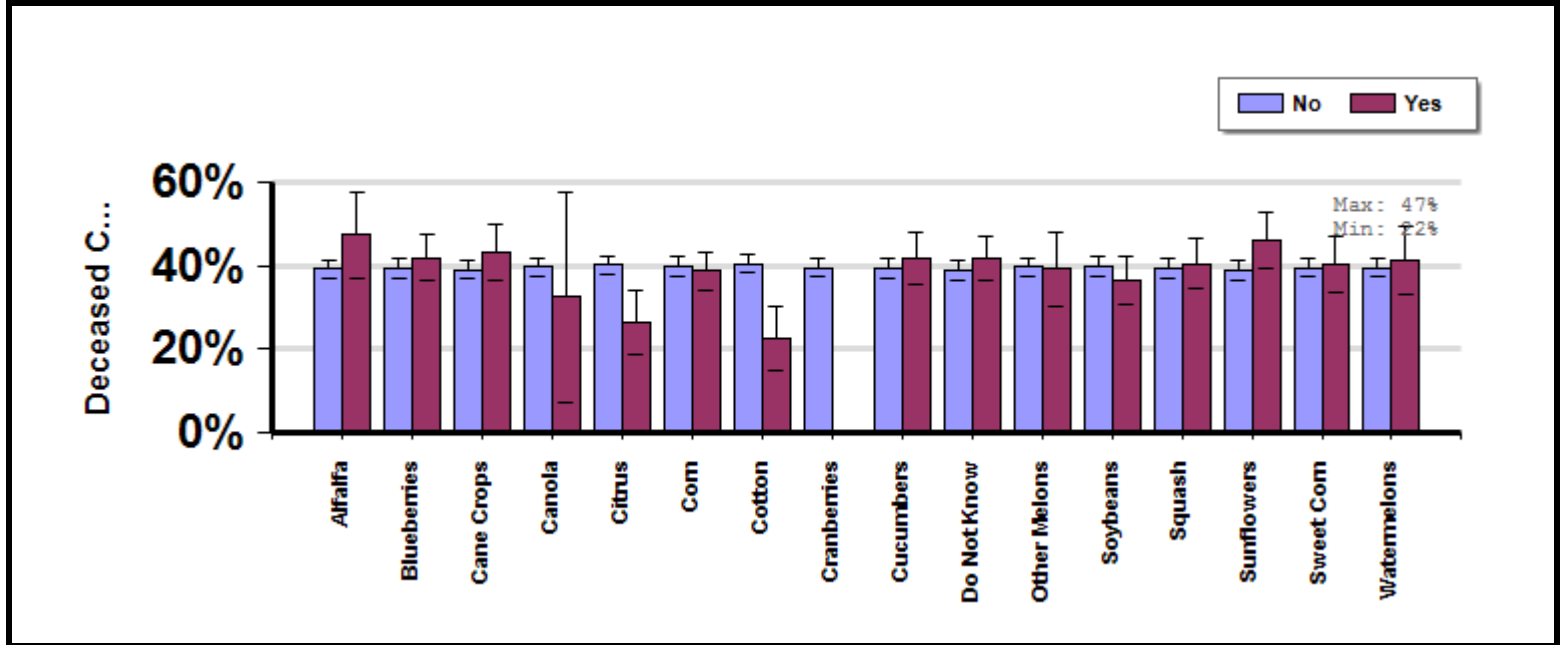
Management  
Survey 2013

( Filtered by:  
Southeast )

Average winter colony mortality reported by beekeepers whose colonies were in proximity to various crops while they were producing honey between April and March.

## Winter

Report ID: 86-  
2013



## Survey Question

which of the following crops were the majority of your colonies in proximity to when they were producing honey?

		Total Number of Respondents Providing Valid Responses	Total Number of Colonies Managed	Average Number of Colonies Managed		Average Colony Loss
				Mean	Standard Error	Mean(%) [Lower, Upper] CI
Alfalfa	No	913	59,065	64.7	24.1	39.1 [36.9, 41.4]
	Yes	49	5,782	118.0	77.3	47.4 [36.9, 57.9]
Blueberries	No	813	56,316	69.3	26.8	39.1 [36.8, 41.5]
	Yes	149	8,531	57.3	33.5	41.9 [36.2, 47.5]
Cane Crops	No	843	63,261	75.0	26.5	39.0 [36.7, 41.4]

	Yes	119	1,586	13.3	3.2	43.2 [36.6,49.7]
Canola	No	952	64,270	67.5	23.4	39.6 [37.4,41.8]
	Yes	10	577	57.7	36.2	32.5 [7.2,57.7]
Citrus	No	923	41,540	45.0	22.3	40.1 [37.9,42.4]
	Yes	39	23,307	597.6	204.7	26.3 [18.7,34.0]
Corn	No	756	47,125	62.3	28.1	39.8 [37.3,42.3]
	Yes	206	17,722	86.0	33.2	38.7 [34.1,43.3]
Cotton	No	917	64,005	69.8	24.3	40.4 [38.2,42.6]
	Yes	45	842	18.7	5.3	22.4 [14.6,30.1]
Cranberries	No	962	64,847	67.4	23.2	39.6 [37.4,41.7]
Cucumbers	No	836	61,249	73.3	26.6	39.2 [36.9,41.6]
	Yes	126	3,598	28.6	15.5	41.6 [35.4,47.8]
Do Not Know	No	788	63,434	80.5	28.3	39.1 [36.7,41.4]
	Yes	174	1,413	8.1	1.1	41.8 [36.6,47.1]
Other Melons	No	898	64,191	71.5	24.8	39.6 [37.3,41.8]
	Yes	64	656	10.3	1.7	39.1 [30.1,48.1]
Soybeans	No	843	52,716	62.5	25.5	40.0 [37.6,42.3]
	Yes	119	12,131	101.9	50.4	36.5 [30.8,42.3]
Squash	No	822	60,982	74.2	27.0	39.4 [37.1,41.8]
	Yes	140	3,865	27.6	14.0	40.4 [34.4,46.4]
Sunflowers	No	860	60,271	70.1	25.6	38.8 [36.5,41.1]
	Yes	102	4,576	44.9	33.7	46.1 [39.3,52.9]
Sweet Corn	No	868	61,885	71.3	25.6	39.5 [37.2,41.8]
	Yes	94	2,962	31.5	18.8	40.2 [33.3,47.0]
Watermelons	No	893	63,167	70.7	25.0	39.4 [37.2,41.7]
	Yes	69	1,680	24.3	14.4	41.2 [32.8,49.5]

---

## Comments About This Data

---

### Relevant Links, References, and Citations

Funded By:



United States  
Department of  
Agriculture

National Institute  
of Food  
and Agriculture

This information is for educational purposes only. References to commercial products or trade names do not imply endorsement by the Bee Informed Partnership or its members. The results presented here are the summary of the population who responded. The sample may not be representative of the beekeeping population at large. These results simply highlight differences in the sample population. The results cannot be considered conclusive, causative, protective, or attest to product efficacy or lack of efficacy.