



The Bee Informed Partnership
Management Survey Results (2013)
Colony Placement and Honey
Production

This information is for educational purposes only.

References to commercial products or trade names do not imply endorsement by the Bee Informed Partnership or its members. The results presented here are the summary of the population who responded. The sample may not be representative of the beekeeping population at large. These results simply highlight differences in the sample population. The results cannot be considered conclusive, causative, protective, or attest to product efficacy or lack of efficacy.



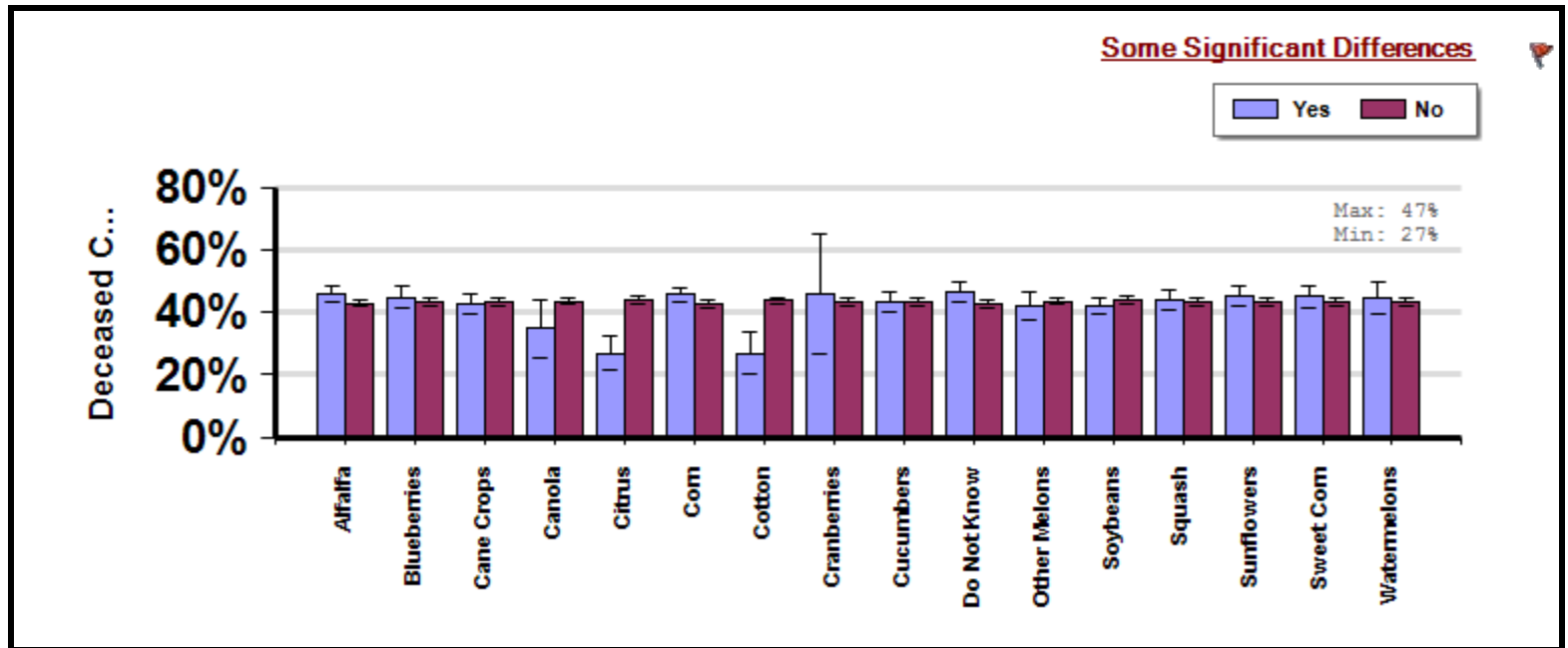
Crops Close to Colonies During Honey Flow

Management Survey 2013

Average winter colony mortality reported by beekeepers whose colonies were in proximity to various crops while they were producing honey between April and March.

Winter

Report ID: 86-2013



Interpretation

Beekeepers who reported positioning their colonies in close proximity to cotton and citrus reported losing fewer colonies than those who did not report positioning their colonies in close proximity to citrus and cotton. There are no significant differences between all other groups. In other words, beekeepers who reported positioning their colonies in close proximity to Alfalfa, blueberries, cane crops, canola, corn, cranberries, cucumbers, melons, soybeans, squash, sweet corn, and watermelons did not report losing more or less colonies than those who did not report being in close proximity to those plants.

Survey Question

which of the following crops were the majority of your colonies in proximity to when they were producing honey?

		Total Number of Respondents Providing Valid Responses	Total Number of Colonies Managed	Average Number of Colonies Managed		Average Colony Loss
				Mean	Standard	Mean(%) [Lower. Upper] CI

					Error	
Alfalfa	Yes	636	315,045	495.4	134.1	45.8 [43.2,48.5]
	No	3,130	200,589	64.1	12.7	43.1 [41.8,44.3]
Blueberries	Yes	431	21,338	49.5	20.6	45.0 [41.7,48.4]
	No	3,335	494,296	148.2	28.2	43.4 [42.2,44.6]
Cane Crops	Yes	406	12,535	30.9	14.0	42.7 [39.3,46.2]
	No	3,360	503,099	149.7	28.1	43.7 [42.5,44.8]
Canola	Yes	36	118,170	3282.5	1207.0	34.8 [25.6,44.1]
	No	3,730	397,464	106.6	22.0	43.6 [42.5,44.8]
Citrus	Yes	97	38,191	393.7	104.6	26.9 [21.5,32.3]
	No	3,669	477,443	130.1	25.6	44.0 [42.9,45.1]
Corn	Yes	1,017	228,622	224.8	78.7	45.8 [43.7,47.9]
	No	2,749	287,012	104.4	18.3	42.7 [41.4,44.0]
Cotton	Yes	72	24,138	335.3	121.3	27.0 [20.3,33.7]
	No	3,694	491,496	133.1	25.5	43.9 [42.7,45.0]
Cranberries	Yes	19	7,866	414.0	377.9	45.8 [26.5,65.2]
	No	3,747	507,768	135.5	25.2	43.5 [42.4,44.7]
Cucumbers	Yes	411	24,957	60.7	32.2	43.6 [40.3,47.0]
	No	3,355	490,677	146.3	27.9	43.5 [42.3,44.7]
Do Not Know	Yes	545	10,967	20.1	11.2	46.8 [43.8,49.8]
	No	3,221	504,667	156.7	29.3	43.0 [41.8,44.2]
Other Melons	Yes	232	17,297	74.6	54.9	42.2 [37.7,46.7]
	No	3,534	498,337	141.0	26.5	43.6 [42.5,44.8]
Soybeans	Yes	642	187,495	292.0	123.3	42.3 [39.7,44.8]
	No	3,124	328,139	105.0	16.5	43.8 [42.6,45.1]
Squash	Yes	494	33,408	67.6	30.4	44.0 [40.8,47.1]

	No	3,272	482,226	147.4	28.5	43.5 [42.3,44.7]
Sunflowers	Yes	493	267,799	543.2	178.1	45.4 [42.2,48.5]
	No	3,273	247,835	75.7	10.4	43.3 [42.1,44.5]
Sweet Corn	Yes	336	20,471	60.9	19.7	45.2 [41.6,48.9]
	No	3,430	495,163	144.4	27.5	43.4 [42.2,44.6]
Watermelons	Yes	178	25,196	141.6	76.0	44.6 [39.6,49.5]
	No	3,588	490,438	136.7	26.1	43.5 [42.3,44.7]

Comments About This Data

Relevant Links, References, and Citations

Funded By:



United States
Department of
Agriculture

National Institute
of Food
and Agriculture

This information is for educational purposes only. References to commercial products or trade names do not imply endorsement by the Bee Informed Partnership or its members. The results presented here are the summary of the population who responded. The sample may not be representative of the beekeeping population at large. These results simply highlight differences in the sample population. The results cannot be considered conclusive, causative, protective, or attest to product efficacy or lack of efficacy.



Honey Production by Season

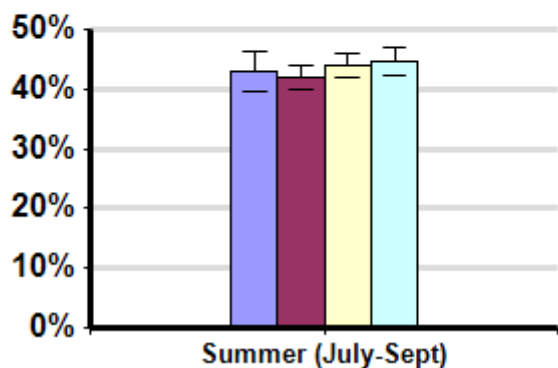
Average winter colony mortality suffered by beekeepers in comparison to amount of honey production between April and March.

Winter

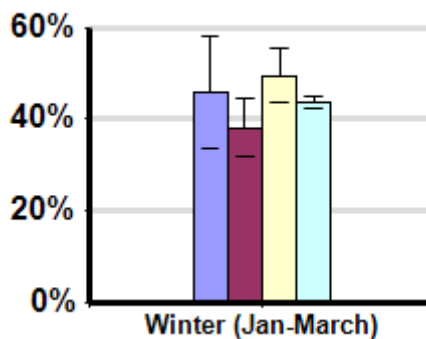
Report ID: 92

Some Significant Differences

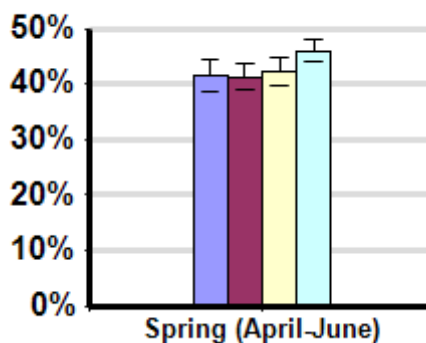
- Above Average
- Average
- Below Average
- Did Not Produce Honey In This Season



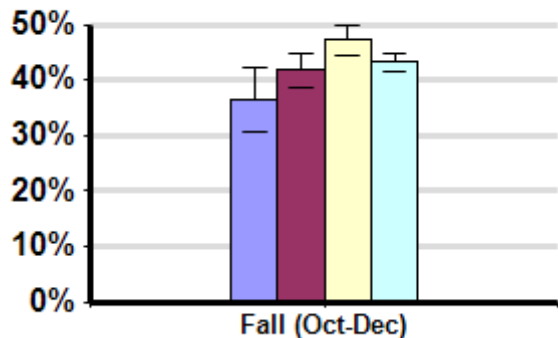
Some Significant Differences



Some Significant Differences



Some Significant Differences



Interpretation

Operations reporting above average honey production in fall lost fewer colonies than beekeepers who reported producing below average honey production.

Survey Question

Season	Result	Total Number of Respondents Providing Valid Responses	Total Number of Colonies Managed	Average Number of Colonies Managed		Average Colony Loss		
				Mean	Standard Error	Mean(%)	Lower 95% CI	Upper 95% CI
Fall (Oct-Dec)	Above Average	146	20,514	140.5	80.7	36.4	30.7	42.1
	Average	481	56,753	118.0	59.0	41.9	38.8	44.9

	Below Average	654	67,624	103.4	36.6	47.2	44.6	49.7
	Did Not Produce Honey In This Season	1,977	197,804	100.1	20.6	43.3	41.7	44.9
Spring (April-June)	Above Average	459	38,541	84.0	44.9	41.5	38.5	44.5
	Average	808	34,818	43.1	14.4	41.2	38.9	43.6
	Below Average	652	211,745	324.8	121.2	42.1	39.6	44.6
	Did Not Produce Honey In This Season	1,442	137,935	95.7	24.8	46.1	44.2	48.0
Summer (July-Sept)	Above Average	391	42,658	109.1	31.7	43.1	39.7	46.4
	Average	1,026	120,970	117.9	38.7	41.9	39.8	44.0
	Below Average	1,098	305,179	277.9	74.6	43.9	41.9	45.9
	Did Not Produce Honey In This Season	974	17,572	18.0	4.8	44.6	42.2	47.0
Winter (Jan-March)	Above Average	35	1,191	34.0	16.5	45.9	33.7	58.1
	Average	124	30,929	249.4	161.3	38.2	31.7	44.6
	Below Average	137	11,090	80.9	52.9	49.4	43.5	55.2
	Did Not Produce Honey In This Season	2,702	231,170	85.6	15.3	43.5	42.2	44.8

Comments About This Data

Relevant Links, References, and Citations

Funded By:



United States
Department of
Agriculture

National Institute
of Food
and Agriculture

This information is for educational purposes only. References to commercial products or trade names do not imply endorsement by the Bee Informed Partnership or its members. The results presented here are the summary of the population who responded. The sample may not be representative of the beekeeping population at large. These results simply highlight differences in the sample population. The results cannot be considered conclusive, causative, protective, or attest to product efficacy or lack of efficacy.