

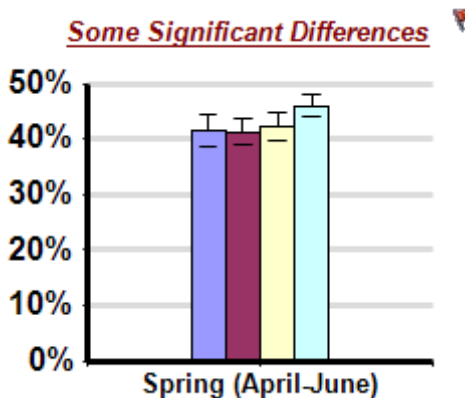
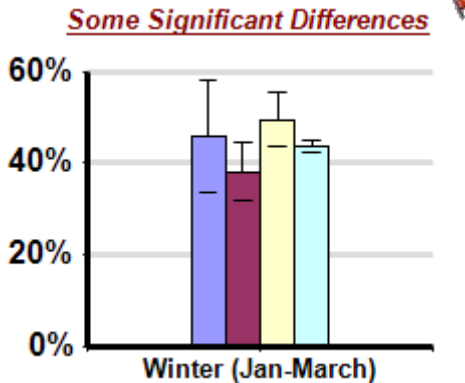
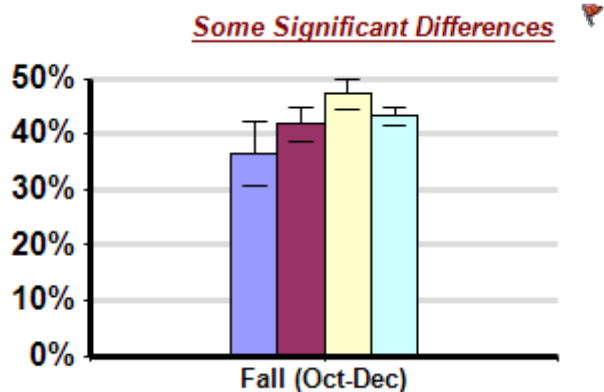
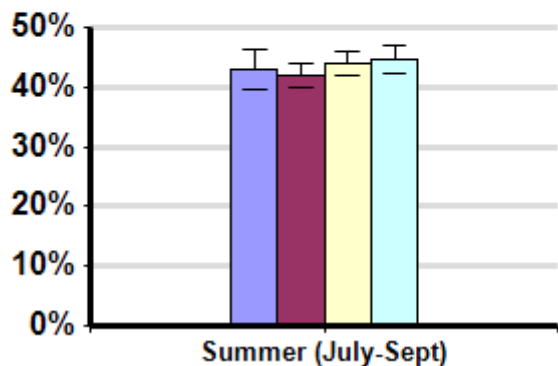
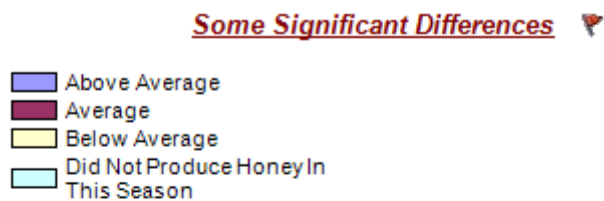


# Honey Production by Season

Average winter colony mortality suffered by beekeepers in comparison to amount of honey production between April and March.

## Winter

Report ID: 92



### Interpretation

Operations reporting above average honey production in fall lost fewer colonies than beekeepers who reported producing below average honey production.

## Survey Question

Season	Result	Total Number of Respondents Providing Valid Responses	Total Number of Colonies Managed	Average Number of Colonies Managed		Average Colony Loss		
				Mean	Standard Error	Mean(%)	Lower 95% CI	Upper 95% CI
Fall (Oct-Dec)	Above Average	146	20,514	140.5	80.7	36.4	30.7	42.1
	Average	481	56,753	118.0	59.0	41.9	38.8	44.9

	Below Average	654	67,624	103.4	36.6	47.2	44.6	49.7
	Did Not Produce Honey In This Season	1,977	197,804	100.1	20.6	43.3	41.7	44.9
Spring (April-June)	Above Average	459	38,541	84.0	44.9	41.5	38.5	44.5
	Average	808	34,818	43.1	14.4	41.2	38.9	43.6
	Below Average	652	211,745	324.8	121.2	42.1	39.6	44.6
	Did Not Produce Honey In This Season	1,442	137,935	95.7	24.8	46.1	44.2	48.0
Summer (July-Sept)	Above Average	391	42,658	109.1	31.7	43.1	39.7	46.4
	Average	1,026	120,970	117.9	38.7	41.9	39.8	44.0
	Below Average	1,098	305,179	277.9	74.6	43.9	41.9	45.9
	Did Not Produce Honey In This Season	974	17,572	18.0	4.8	44.6	42.2	47.0
Winter (Jan-March)	Above Average	35	1,191	34.0	16.5	45.9	33.7	58.1
	Average	124	30,929	249.4	161.3	38.2	31.7	44.6
	Below Average	137	11,090	80.9	52.9	49.4	43.5	55.2
	Did Not Produce Honey In This Season	2,702	231,170	85.6	15.3	43.5	42.2	44.8

---

## Comments About This Data

---

## Relevant Links, References, and Citations

Funded By:



United States  
Department of  
Agriculture

National Institute  
of Food  
and Agriculture

This information is for educational purposes only. References to commercial products or trade names do not imply endorsement by the Bee Informed Partnership or its members. The results presented here are the summary of the population who responded. The sample may not be representative of the beekeeping population at large. These results simply highlight differences in the sample population. The results cannot be considered conclusive, causative, protective, or attest to product efficacy or lack of efficacy.