

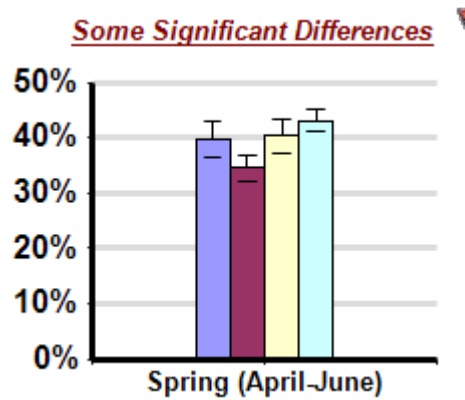
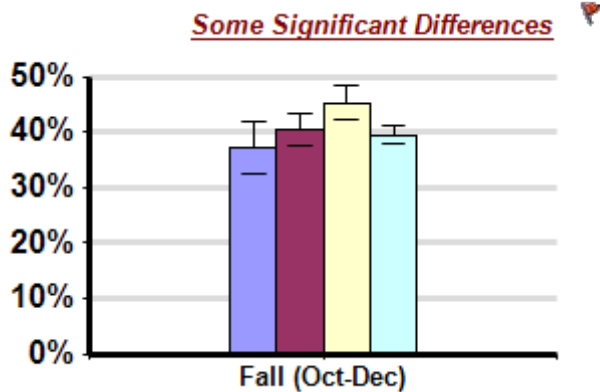
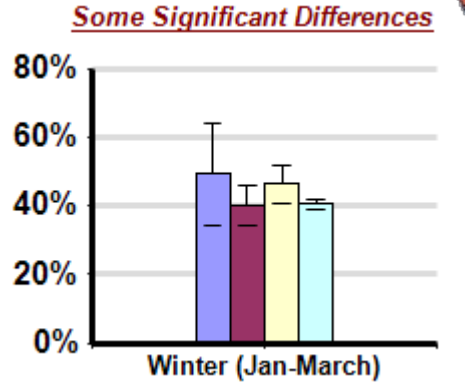
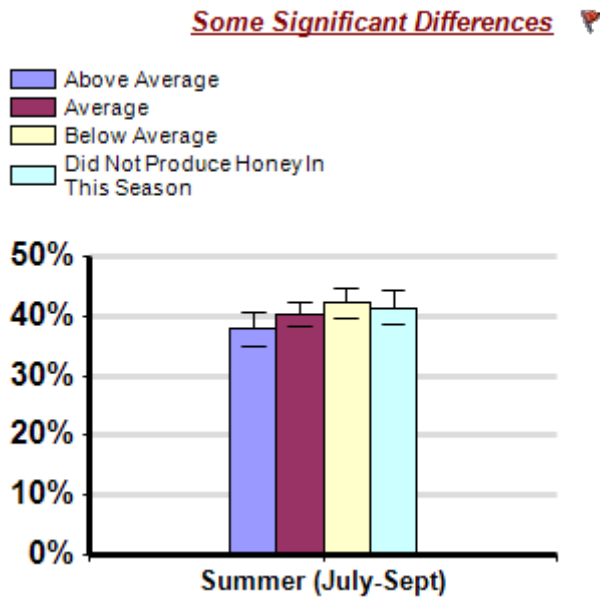


# Honey Production by Season

Average winter colony mortality suffered by beekeepers in comparison to amount of honey production between April and March.

## Winter

Report ID: 92



### Interpretation

Operations who reported average honey production during the spring months (Apr-Jun) lost fewer colonies than operations that had below average honey production or did not produce honey in the spring. Also, beekeepers who reported below average honey production in the fall (Oct-Dec) lost more colonies than those who did not produce honey in the fall.

## Survey Question

Season	Result	Total Number of Respondents Providing Valid Responses	Total Number of Colonies Managed	Average Number of Colonies Managed		Average Colony Loss		
				Mean	Standard Error	Mean(%)	Lower 95% CI	Upper 95% CI
Fall (Oct-Dec)	Above Average	224	26,611	118.8	70.3	37.2	32.6	41.9
	Average	519	23,915	46.1	16.6	40.5	37.5	43.5

	Below Average:	496	15,062	30.4	8.4	45.3	42.3	48.4
	Did Not Produce Honey In This Season:	1,625	150,041	92.3	21.0	39.5	37.8	41.1
Spring (April-June)	Above Average:	366	13,633	37.2	14.3	39.8	36.5	43.1
	Average:	686	46,757	68.2	28.5	34.6	32.1	37.0
	Below Average:	464	37,839	81.5	22.8	40.3	37.3	43.3
	Did Not Produce Honey In This Season:	1,459	134,650	92.3	22.9	43.2	41.4	45.0
Summer (July-Sept)	Above Average:	523	48,369	92.5	26.0	37.8	35.0	40.6
	Average:	1,123	153,994	137.1	59.7	40.2	38.2	42.3
	Below Average:	759	86,103	113.4	37.2	42.2	39.7	44.6
	Did Not Produce Honey In This Season:	627	12,076	19.3	7.6	41.3	38.5	44.1
Winter (Jan-March)	Above Average:	32	302	9.4	3.4	49.3	34.5	64.1
	Average:	153	13,093	85.6	47.9	40.1	34.4	45.9
	Below Average:	155	5,403	34.9	21.3	46.2	40.5	51.9
	Did Not Produce Honey In This Season:	2,280	191,364	83.9	16.6	40.5	39.1	41.9

---

## Comments About This Data

---

## Relevant Links, References, and Citations

Funded By:



United States  
Department of  
Agriculture

National Institute  
of Food  
and Agriculture

This information is for educational purposes only. References to commercial products or trade names do not imply endorsement by the Bee Informed Partnership or its members. The results presented here are the summary of the population who responded. The sample may not be representative of the beekeeping population at large. These results simply highlight differences in the sample population. The results cannot be considered conclusive, causative, protective, or attest to product efficacy or lack of efficacy.