



# Average Loss By Reason Responding Beekeepers Indicated they Kept Bees

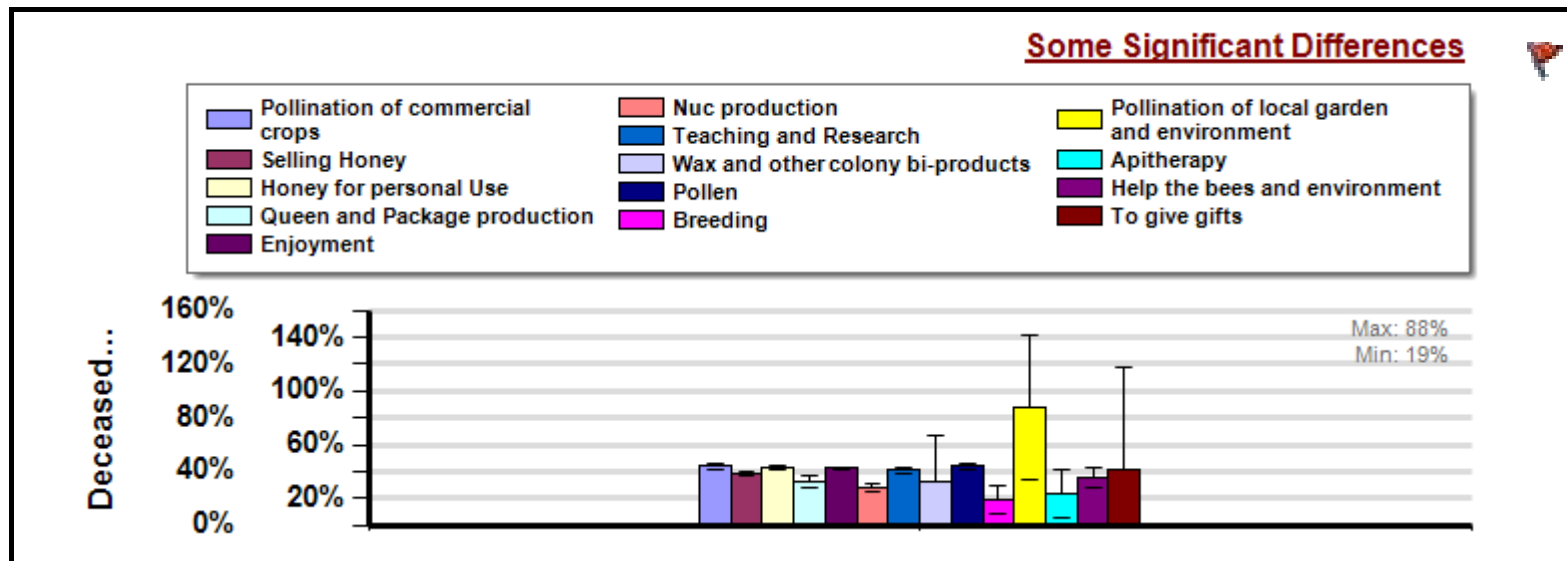
Management Survey 2015

( Filtered by: )

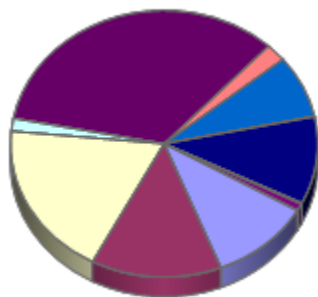
Winter

Average loss suffered by beekeepers who indicated the reason or reasons they kept bees between April and March.

Report ID: 14-2015



### Participant Ratio



### Interpretation

Beekeepers who kept bees primarily for breeding purposes or nuc, queen and package production lost fewer overwintering colonies than those who kept bees for pollination of commercial crops, production of honey for personal use, enjoyment, teaching and research, and pollen production.

### Survey Question

	Total Number of Respondents Providing Valid Responses	Total Number of Colonies Managed	Average Colony Loss	Percentage of responding beekeepers in each operations size classification who indicated a particular reason they kept bees. Respondents could indicate more than one reason.		
			Mean(%) [Lower, Upper] CI	Backyard	Sideline	Commercial
Pollination of commercial crops	1,132	282,360	44% [42%, 46%]	25.2%	25.8%	83.6%
Selling Honey	1,460	301,914	38% [37%, 40%]	31.1%	80.1%	90.9%
Honey for personal Use	1,998	22,625	43% [42%, 45%]	47.5%	15.2%	5.5%
Queen and Package production	165	57,202	33% [29%, 37%]	2.7%	28.5%	14.5%

Enjoyment	3,599	42,327	42% [41%, 43%]	85.2%	40.4%	5.5%
Nuc production	231	68,059	28% [25%, 31%]	4.0%	36.4%	21.8%
Teaching and Research	808	15,570	41% [39%, 43%]	18.5%	25.8%	5.5%
Wax and other colony bi-products	5	37	32% [0%, 66%]	0.1%	0.0%	0.0%
Pollen	1,128	282,327	44% [42%, 46%]	25.1%	25.8%	83.6%
Breeding	4	77	19% [8%, 29%]	0.1%	0.0%	0.0%
Pollination of local garden and environment	3	11	88% [34%, 141%]	0.1%	0.0%	0.0%
Apitherapy	8	28	23% [5%, 41%]	0.2%	0.0%	0.0%
Help the bees and environment	88	1,425	35% [27%, 43%]	2.1%	0.0%	1.8%
To give gifts	3	14	41% [0%, 118%]	0.1%	0.0%	0.0%

---

## Comments About This Data

---

## Relevant Links, References, and Citations

Funded By:



United States  
Department of  
Agriculture

National Institute  
of Food  
and Agriculture

This information is for educational purposes only. References to commercial products or trade names do not imply endorsement by the Bee Informed Partnership or its members. The results presented here are the summary of the population who responded. The sample may not be representative of the beekeeping population at large. These results simply highlight differences in the sample population. The results cannot be considered conclusive, causative, protective, or attest to product efficacy or lack of efficacy.