



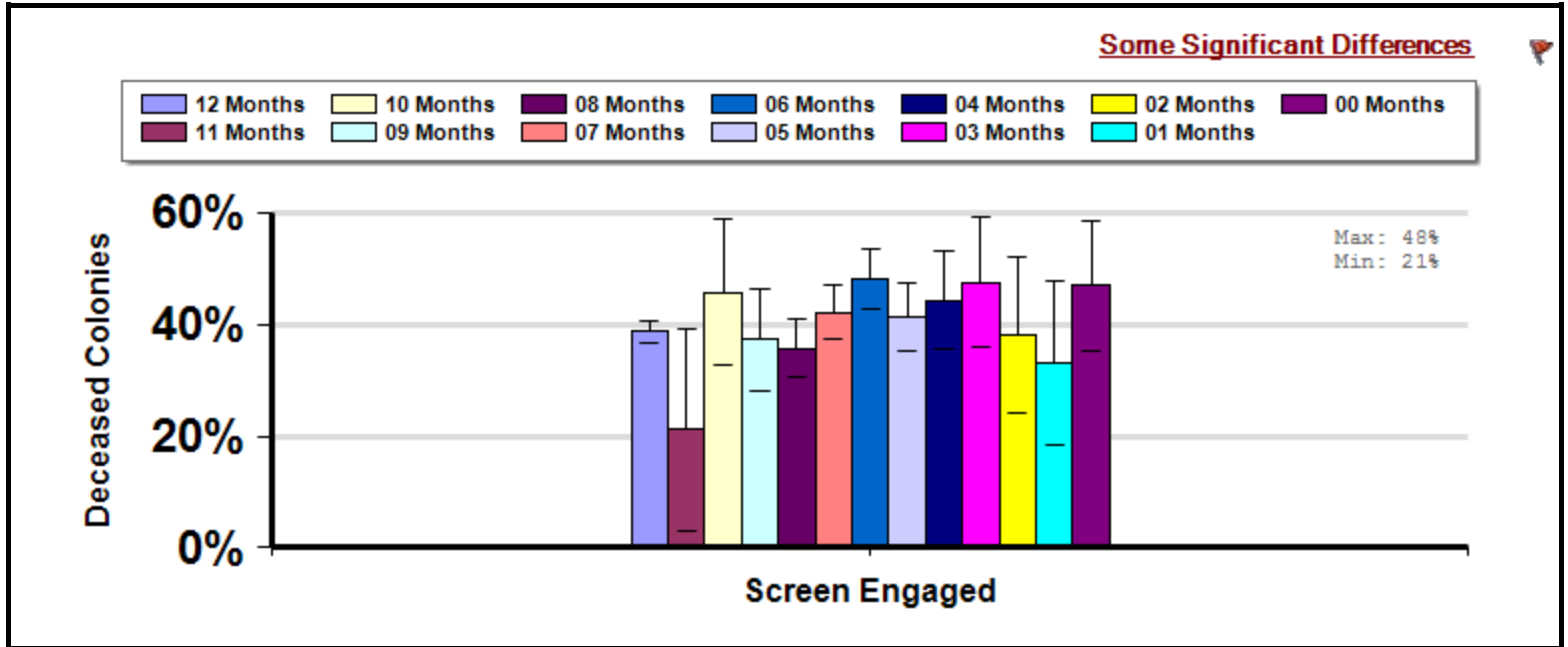
# Screen Bottom Boards by Months Engaged

Management  
Survey 2015

Average winter colony mortality reported by beekeepers that reported use of screen bottom boards on their colonies between April and March by the number of months screen bottom boards were engaged.

## Winter

Report ID: 140-2015



### Interpretation

Beekeepers who had their screen bottom boards engaged for only 6 months experienced significantly higher overwintering losses than beekeepers who had their screen bottom boards engaged for 8 or 12 months.

### Survey Question

Over the last year, did you employ any of the IPM practices/equipment listed below?

-Screen bottom board

		Total Number of Respondents Providing Valid Responses	Total Number of Colonies Managed	Average Number of Colonies Managed		Average Colony Loss
				Mean	Standard Error	Mean(%) [Lower, Upper] CI
Screen Engaged	12 Months	1,249	12,232	9.8	2.7	38.8 [36.8,40.8]
	11 Months	14	120	8.6	3.7	21.2 [3.1,39.3]
	10 Months	33	177	5.4	0.9	45.7 [32.6,58.9]

09 Months	61	373	6.1	0.8	37.3 [28.1,46.5]
08 Months	161	1,052	6.5	0.6	35.8 [30.6,40.9]
07 Months	225	1,631	7.2	1.0	42.3 [37.4,47.1]
06 Months	185	1,005	5.4	0.5	48.2 [42.7,53.6]
05 Months	136	914	6.7	0.8	41.3 [35.2,47.5]
04 Months	76	410	5.4	0.8	44.4 [35.6,53.2]
03 Months	40	383	9.6	4.1	47.6 [36.0,59.2]
02 Months	31	213	6.9	1.5	38.1 [24.0,52.1]
01 Months	26	138	5.3	1.0	33.2 [18.5,48.0]
00 Months	56	214	3.8	0.5	47.0 [35.5,58.6]

---

## Comments About This Data

---

## Relevant Links, References, and Citations

Funded By:



United States  
Department of  
Agriculture

National Institute  
of Food  
and Agriculture

This information is for educational purposes only. References to commercial products or trade names do not imply endorsement by the Bee Informed Partnership or its members. The results presented here are the summary of the population who responded. The sample may not be representative of the beekeeping population at large. These results simply highlight differences in the sample population. The results cannot be considered conclusive, causative, protective, or attest to product efficacy or lack of efficacy.